

À des fins de recherche uniquement

Anticorps Polyclonal de lapin anti-RIMS1-Specific



Numéro de catalogue: 20092-1-AP

Informations de base

Numéro de catalogue:
20092-1-AP

Taille:
150ul , Concentration: 133 µg/ml by
Bradford method using BSA as the
standard;

Hôte:
Lapin

Isotype:
IgG

Numéro d'acquisition GenBank:
NM_014989

Identification du gène (NCBI):
22999

Nom complet:
regulating synaptic membrane
exocytosis 1

MW calculé
189 kDa

Méthode de purification:
Purification par affinité contre
l'antigène

Applications

Applications testées:
IHC, ELISA

Spécificité de l'espèce:
Humain

Informations générales

RIMS1, also named as KIAA0340, RAB3IP2 and RIM1, is a rab effector involved in exocytosis. It may act as scaffold protein that regulates neurotransmitter release at the active zone. It is essential for maintaining normal probability of neurotransmitter release and for regulating release during short-term synaptic plasticity. Defects in RIMS1 may be a cause of cone-rod dystrophy type 7 (CORD7). This antibody is specific to RIMS1.

Stockage

Stockage:
Stocker à -20°C. Stable pendant un an après l'expédition.
Tampon de stockage:
PBS avec azoture de sodium à 0,02 % et glycérol à 50 % pH 7,3
L'aliquotage n'est pas nécessaire pour le stockage à -20C

*** Les 20ul contiennent 0,1% de BSA.

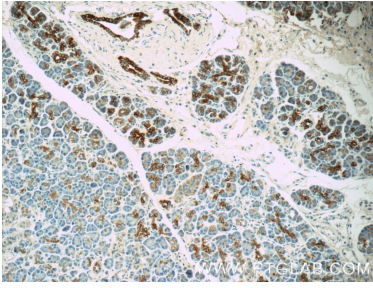
For technical support and original validation data for this product please contact:

T: 1 (888) 4PTGLAB (1-888-478-4522) (toll free
in USA), or 1(312) 455-8498 (outside USA)

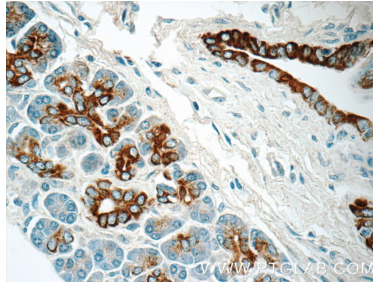
E: proteintech@ptglab.com
W: ptglab.com

This product is exclusively available under Proteintech Group brand and is not available to purchase from any other manufacturer.

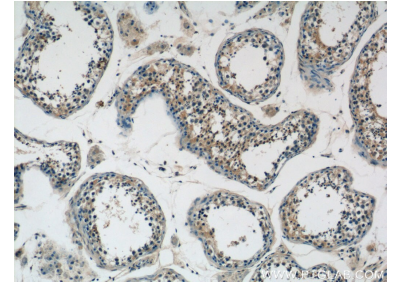
Données de validation sélectionnées



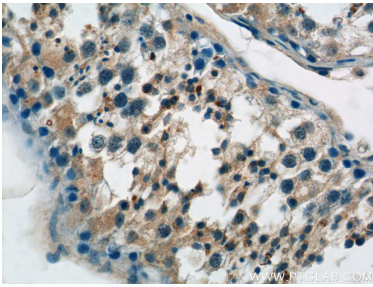
Immunohistochemical analysis of paraffin-embedded human pancreas tissue slide using 20092-1-AP (RIMS1-Specific Antibody) at dilution of 1:50 (under 10x lens).



Immunohistochemical analysis of paraffin-embedded human pancreas tissue slide using 20092-1-AP (RIMS1-Specific Antibody) at dilution of 1:50 (under 40x lens).



Immunohistochemical analysis of paraffin-embedded human testis tissue slide using 20092-1-AP (RIMS1-Specific Antibody) at dilution of 1:50 (under 10x lens).



Immunohistochemical analysis of paraffin-embedded human testis tissue slide using 20092-1-AP (RIMS1-Specific Antibody) at dilution of 1:50 (under 40x lens).