

À des fins de recherche uniquement

Anticorps Polyclonal de lapin anti-CPNE9-Specific



Numéro de catalogue: 20098-1-AP

Informations de base

Numéro de catalogue:
20098-1-AP

Taille:
150ul, Concentration: 240 µg/ml by
Nanodrop and 180 µg/ml by Bradford
method using BSA as the standard;

Hôte:
Lapin

Isotype:
IgG

Numéro d'acquisition GenBank:
NM_153635

Identification du gène (NCBI):
151835

Nom complet:
copine family member IX

MW calculé
62 kDa

MW observés:
56 kDa

Méthode de purification:
Purification par affinité contre
l'antigène

Dilutions recommandées:
WB 1:200-1:1000

Applications

Applications testées:
WB, ELISA

Spécificité de l'espèce:
Humain, rat, souris

Contrôles positifs:

WB : tissu cérébral de souris,

Informations générales

Copines are a family of evolutionarily conserved calcium-dependent phospholipid-binding proteins (PMID: 9430674). They contain two Ca(2+)- and phospholipid-binding domains known as C2 domains. Copines are potentially involved in regulating membrane trafficking and in protein-protein interactions. CPNE9, also named as KIAA4217, belongs to the copine family. This antibody is specific to CPNE9.

Stockage

Stockage:

Stocker à -20°C. Stable pendant un an après l'expédition.

Tampon de stockage:

PBS avec azoture de sodium à 0,02 % et glycérol à 50 % pH 7,3

L'aliquotage n'est pas nécessaire pour le stockage à -20C

*** Les 20ul contiennent 0,1% de BSA.

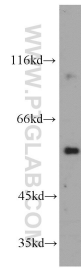
For technical support and original validation data for this product please contact:

T: 1 (888) 4PTGLAB (1-888-478-4522) (toll free
in USA), or 1(312) 455-8498 (outside USA)

E: proteintech@ptglab.com
W: ptglab.com

This product is exclusively available under Proteintech Group brand and is not available to purchase from any other manufacturer.

Données de validation sélectionnées



mouse brain tissue were subjected to SDS PAGE followed by western blot with 20098-1-AP (CPNE9-Specific antibody) at dilution of 1:200 incubated at room temperature for 1.5 hours.