

À des fins de recherche uniquement

# Anticorps Polyclonal de lapin anti-EEF2



Numéro de catalogue: 20107-1-AP

Phare

8 Publications

## Informations de base

Numéro de catalogue:

20107-1-AP

Taille:

150ul, Concentration: 500 µg/ml by Nanodrop and 213 µg/ml by Bradford method using BSA as the standard;

Hôte:

Lapin

Isotype:

IgG

Immunogen Catalog Number:

AG13826

Numéro d'acquisition GenBank:

BC126259

Identification du gène (NCBI):

1938

Nom complet:

eukaryotic translation elongation factor 2

MW calculé

858 aa, 95 kDa

MW observés:

95 kDa, 100 kDa

Méthode de purification:

Purification par affinité contre l'antigène

Dilutions recommandées:

WB 1:2000-1:16000

IP 0.5-4.0 ug for IP and 1:500-1:1000 for WB

IHC 1:20-1:200

IF 1:10-1:100

## Applications

Applications testées:

FC, IF, IHC, IP, WB, ELISA

Demandes citées:

CoIP, RIP, WB

Spécificité de l'espèce:

Humain, rat, souris

Espèces citées:

Humain, poisson-zèbre

**Remarque-IHC: il est suggéré de démasquer l'antigène avec un tampon de TE buffer pH 9,0; (\*) A défaut, 'le démasquage de l'antigène peut être 'effectué avec un tampon citrate pH 6,0.**

Contrôles positifs:

WB : cellules C6, cellules HEK-293, cellules HeLa, cellules Jurkat, cellules NIH/3T3

IP : cellules HeLa,

IHC : tissu de cancer de l'estomac humain, tissu de cancer du sein humain

IF : cellules HepG2,

## Informations générales

### Publications notables

Autrice	Pubmed ID	Journal	Application
Wang Li	31558304	Pathol Res Pract	WB
Xinyao Lin	31061416	Nat Commun	WB
Yang Lu	27036204	BMC Nephrol	WB

## Stockage

Stockage:

Stocker à -20°C. Stable pendant un an après l'expédition.

Tampon de stockage:

PBS avec azoture de sodium à 0,02 % et glycérol à 50 % pH 7,3

L'aliquotage n'est pas nécessaire pour le stockage à -20C

\*\*\* Les 20ul contiennent 0,1% de BSA.

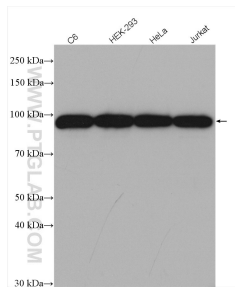
For technical support and original validation data for this product please contact:

T: 1 (888) 4PTGLAB (1-888-478-4522) (toll free in USA), or 1(312) 455-8498 (outside USA)

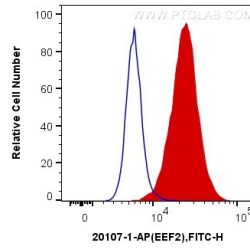
E: proteintech@ptglab.com  
W: ptglab.com

This product is exclusively available under Proteintech Group brand and is not available to purchase from any other manufacturer.

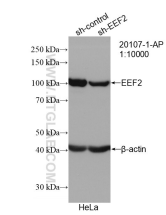
## Données de validation sélectionnées



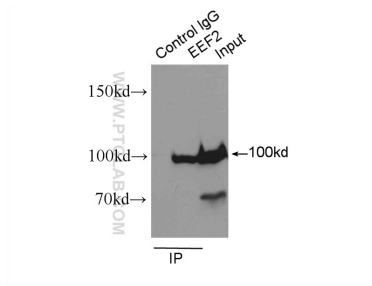
Various lysates were subjected to SDS PAGE followed by western blot with 20107-1-AP (EEF2 antibody) at dilution of 1:8000 incubated at room temperature for 1.5 hours.



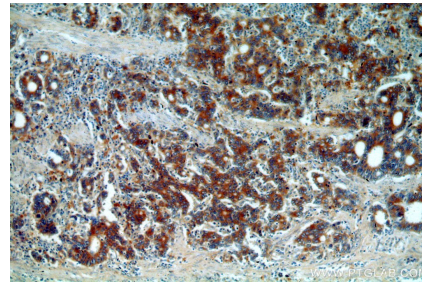
$1 \times 10^6$  HeLa cells were intracellularly stained with 0.2  $\mu$ g Anti-Human EEF2 (20107-1-AP) and CoraLite®488-Conjugated AffiniPure Goat Anti-Rabbit IgG(H+L) at dilution 1:1000 (red), or 0.2  $\mu$ g Control Antibody. Cells were fixed with 4% PFA and permeabilized with Flow Cytometry Perm Buffer (PF00011-C).



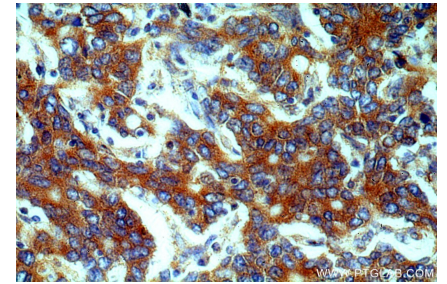
WB result of EEF2 antibody (20107-1-AP; 1:10000; incubated at room temperature for 1.5 hours) with sh-Control and sh-EEF2 transfected HeLa cells.



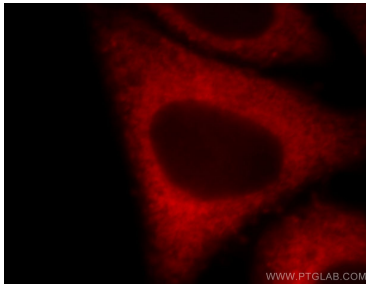
IP Result of anti-EEF2 (IP:20107-1-AP, 3 $\mu$ g; Detection:20107-1-AP 1:500) with HeLa cells lysate 1600 $\mu$ g.



Immunohistochemical analysis of paraffin-embedded human stomach cancer using 20107-1-AP (EEF2 antibody) at dilution of 1:100 (under 10x lens).



Immunohistochemical analysis of paraffin-embedded human stomach cancer using 20107-1-AP (EEF2 antibody) at dilution of 1:100 (under 40x lens).



Immunofluorescent analysis of HepG2 cells, using EEF2 antibody 20107-1-AP at 1:25 dilution and Rhodamine-labeled goat anti-rabbit IgG (red).