

À des fins de recherche uniquement

Anticorps Polyclonal de lapin anti-SOX2



Numéro de catalogue: 20118-1-AP

Phare

17 Publications

Informations de base

Numéro de catalogue: 20118-1-AP	Numéro d'acquisition GenBank: BC013923	Méthode de purification: Purification par affinité contre l'antigène
Taille: 150ul, Concentration: 400 µg/ml by Nanodrop;	Identification du gène (NCBI): 6657	Dilutions recommandées: WB 1:500-1:3000 IHC 1:50-1:500 IF 1:50-1:500
Hôte: Lapin	Nom complet: SRY (sex determining region Y)-box 2	
Isotype: IgG	MW calculé: 34 kDa	
Immunogen Catalog Number: AG13635	MW observés: 34-40 kDa	

Applications

Applications testées:
FC, IF, IHC, WB, ELISA

Demandes citées:
IF, IHC, WB

Spécificité de l'espèce:
Humain, rat, souris

Espèces citées:
Humain, poulet, souris

Remarque-IHC: il est suggéré de démasquer l'antigène avec un tampon de TE buffer pH 9,0; (*) À défaut, le démasquage de l'antigène peut être effectué avec un tampon citrate pH 6,0.

Contrôles positifs:

WB : tissu cérébral de souris, cellules HEK-293 transfectées, tissu cérébral de rat, tissu embryonnaire de souris

IHC : tissu embryonnaire de souris, tissu cérébral de souris

IF : tissu cérébral de souris, tissu embryonnaire de souris

Informations générales

Sox2, also known as SRY (sex determining region Y)-box 2, is a transcription factor essential for maintaining self-renewal of undifferentiated ES cells and is one of the key transcription factors used to reprogram mouse and human fibroblasts to a pluripotent state. Sox2 expressed in undifferentiated pluripotent stem cells and germ cells during development. Affinity purified rabbit anti-Sox2 antibody can be used to demonstrate pluripotency of ES and iPS cells. This antibody is a rabbit polyclonal antibody raised against an internal region of human SOX2. a rare undifferentiated cell population that is intermingled with the Bergmann glia of the adult murine cerebellar cortex, expresses the stem cell markers Sox2 and Nestin, and lacks markers of glial or neuronal differentiation. Sox2-expressing neural stem cells in the subgranular zone (SGZ), a well-known stem cell niche of the adult brain.

Publications notables

Autrice	Pubmed ID	Journal	Application
Jun Zhang	36075559	Cell Signal	IHC
Eveljn Scarian	35628156	Int J Mol Sci	IF
Linna Zhang	33986860	Exp Ther Med	WB

Stockage

Stockage:

Stocker à -20°C. Stable pendant un an après l'expédition.

Tampon de stockage:

PBS avec azoture de sodium à 0,02 % et glycérol à 50 % pH 7,3

L'aliquote n'est pas nécessaire pour le stockage à -20°C

*** Les 20ul contiennent 0,1% de BSA.

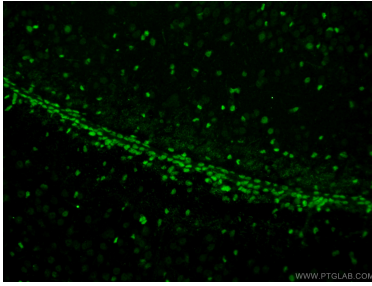
For technical support and original validation data for this product please contact:

T: 1 (888) 4PTGLAB (1-888-478-4522) (toll free in USA), or 1(312) 455-8498 (outside USA)

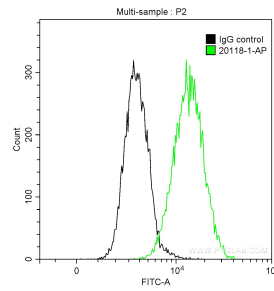
E: proteintech@ptglab.com
W: ptglab.com

This product is exclusively available under Proteintech Group brand and is not available to purchase from any other manufacturer.

Données de validation sélectionnées



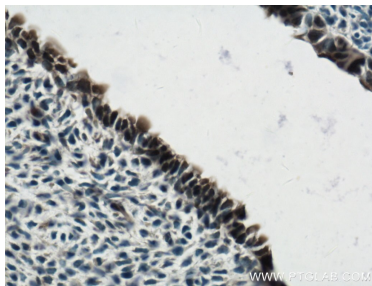
Immunofluorescent analysis of (4% PFA) fixed mouse brain tissue using 20118-1-AP (SOX2 antibody) at dilution of 1:50 and Alexa Fluor 488-Conjugated AffiniPure Goat Anti-Rabbit IgG(H+L).



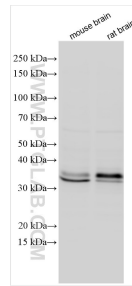
1X10⁶ NCCIT cells were intracellularly stained with 0.5 ug Anti-Human SOX2 (20118-1-AP) and CoraLite®488-Conjugated AffiniPure Goat Anti-Rabbit IgG(H+L) at dilution 1:1000 (green), and 0.5 ug Control Antibody. Cells were fixed with 90% MeOH.



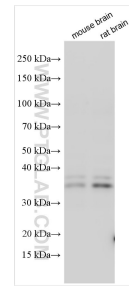
mouse brain tissue were subjected to SDS PAGE followed by western blot with 20118-1-AP (SOX2 antibody) at dilution of 1:600 incubated at room temperature for 1.5 hours.



Immunohistochemical analysis of paraffin-embedded mouse embryo tissue slide using 20118-1-AP (SOX2 Antibody) at dilution of 1:200 (under 40x lens). Heat mediated antigen retrieval with Tris-EDTA buffer (pH 9.0).



Various lysates were subjected to SDS PAGE followed by western blot with 20118-1-AP (SOX2 antibody) at dilution of 1:1000 incubated at room temperature for 1.5 hours.



Various lysates were subjected to SDS PAGE followed by western blot with 20118-1-AP (SOX2 antibody) at dilution of 1:1000 incubated at room temperature for 1.5 hours.