

À des fins de recherche uniquement

Anticorps Polyclonal de lapin anti-CUEDC2



Numéro de catalogue: 20123-1-AP

Informations de base

Numéro de catalogue:

20123-1-AP

Taille:

150ul, Concentration: 800 µg/ml by Nanodrop and 347 µg/ml by Bradford method using BSA as the standard;

Hôte:

Lapin

Isotype:

IgG

Immunogen Catalog Number:

AG13847

Numéro d'acquisition GenBank:

BC000262

Identification du gène (NCBI):

79004

Nom complet:

CUE domain containing 2

MW calculé

287 aa, 32 kDa

MW observés:

32 kDa

Méthode de purification:

Purification par affinité contre l'antigène

Dilutions recommandées:

WB 1:1000-1:4000

IP 0.5-4.0 ug for IP and 1:500-1:1000 for WB

IHC 1:400-1:1600

IF 1:50-1:500

Applications

Applications testées:

IF, IHC, IP, WB, ELISA

Spécificité de l'espèce:

Humain, souris

Remarque-IHC: il est suggéré de démasquer l'antigène avec un tampon de TE buffer pH 9.0; (*) À défaut, 'le démasquage de l'antigène peut être effectué avec un tampon citrate pH 6,0.

Contrôles positifs:

WB: cellules HepG2, cellules HeLa, cellules Jurkat, tissu cérébral de souris, tissu cérébral humain, tissu rénal de souris, tissu rénal humain

IP: tissu cérébral de souris,

IHC: tissu de tumeur ovarienne humain, tissu de cancer du sein humain, tissu de mélanome malin humain

IF: cellules HeLa,

Informations générales

CUE domain-containing 2 (CUEDC2) is a ubiquitin-binding motif-containing protein involved in the regulation of the cell cycle, inflammation, and tumorigenesis. It is ubiquitously expressed in human tissues and organs, not only highly expressed in the normal brain, heart and testis, but also some kinds of cancers, such as breast, ovarian and kidney cancers. CUEDC2 could act as an adaptor protein to target IκB kinase (IKK) for dephosphorylation and inactivation by recruiting protein phosphatase (PP1), and thus repressed activation of the transcription factor NF-κB. Moreover, CUEDC2, is a key factor in endocrine resistance in breast cancer.

Stockage

Stockage:

Stocker à -20°C. Stable pendant un an après l'expédition.

Tampon de stockage:

PBS avec azoture de sodium à 0,02 % et glycérol à 50 % pH 7,3

L'aliquotage n'est pas nécessaire pour le stockage à -20C

*** Les 20ul contiennent 0,1% de BSA.

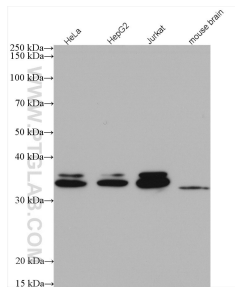
For technical support and original validation data for this product please contact:

T: 1 (888) 4PTGLAB (1-888-478-4522) (toll free in USA), or 1(312) 455-8498 (outside USA)

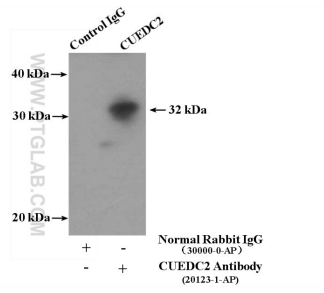
E: proteintech@ptglab.com
W: ptglab.com

This product is exclusively available under Proteintech Group brand and is not available to purchase from any other manufacturer.

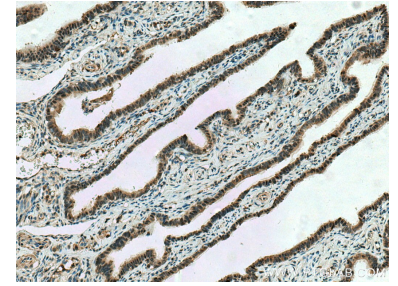
Données de validation sélectionnées



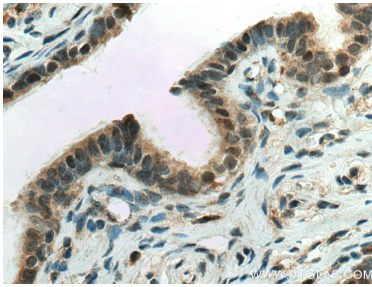
Various lysates were subjected to SDS PAGE followed by western blot with 20123-1-AP (CUEDC2 antibody) at dilution of 1:4000 incubated at room temperature for 1.5 hours.



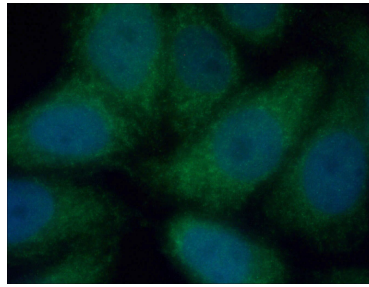
IP Result of anti-CUEDC2 (IP:20123-1-AP, 4ug; Detection:20123-1-AP 1:500) with mouse brain tissue lysate 4000ug.



Immunohistochemical analysis of paraffin-embedded human ovary tumor tissue slide using 20123-1-AP (CUEDC2 antibody) at dilution of 1:800 (under 10x lens). Heat mediated antigen retrieval with Tris-EDTA buffer (pH 9.0).



Immunohistochemical analysis of paraffin-embedded human ovary tumor tissue slide using 20123-1-AP (CUEDC2 antibody) at dilution of 1:800 (under 40x lens). Heat mediated antigen retrieval with Tris-EDTA buffer (pH 9.0).



Immunofluorescent analysis of (-20°C Ethanol) fixed HeLa cells using 20123-1-AP (CUEDC2 antibody) at dilution of 1:50 and Alexa Fluor 488-Conjugated AffiniPure Goat Anti-Rabbit IgG(H+L).