

À des fins de recherche uniquement

Anticorps Polyclonal de lapin anti-SLC43A3



Numéro de catalogue: 20131-1-AP

Informations de base

Numéro de catalogue: 20131-1-AP	Numéro d'acquisition GenBank: BC003163	Méthode de purification: Purification par affinité contre l'antigène
Taille: 150ul , Concentration: 550 µg/ml by Nanodrop;	Identification du gène (NCBI): 29015	Dilutions recommandées: WB 1:500-1:2000
Hôte: Lapin	Nom complet: solute carrier family 43, member 3	
Isotype: IgG	MW calculé: 491 aa, 55 kDa	
Immunogen Catalog Number: AG13999	MW observés: 55 kDa	

Applications

Applications testées: WB, ELISA	Contrôles positifs: WB : cellules HL-60, cellules MCF-7
Spécificité de l'espèce: Humain	

Informations générales

Sodium-independent purine-selective nucleobase transporter(SLC43A3), also called as equilibrative nucleobase transporter 1(ENBT1), is a nucleobase transporter involved in purine salvage pathways in mammals, which mediates the equilibrative transport of extracellular purine nucleobases such as adenine, guanine and hypoxanthine.(PubMed:26455426, PubMed:32339528) It has been found that it may regulate the transport of fatty acids (FA) in fat cells, as a positive regulator of FA efflux and as a negative regulator of FA uptake.(PMID: 32217606)

Stockage

Stockage:
Stocker à -20°C. Stable pendant un an après l'expédition.
Tampon de stockage:
PBS avec azoture de sodium à 0,02 % et glycérol à 50 % pH 7,3
L'aliquotage n'est pas nécessaire pour le stockage à -20C

***** Les 20ul contiennent 0,1% de BSA.**

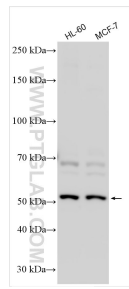
For technical support and original validation data for this product please contact:

T: 1 (888) 4PTGLAB (1-888-478-4522) (toll free in USA), or 1(312) 455-8498 (outside USA)

E: proteintech@ptglab.com
W: ptglab.com

This product is exclusively available under Proteintech Group brand and is not available to purchase from any other manufacturer.

Données de validation sélectionnées



Various lysates were subjected to SDS PAGE followed by western blot with 20131-1-AP (SLC43A3 antibody) at dilution of 1:1000 incubated at room temperature for 1.5 hours.