

À des fins de recherche uniquement

Anticorps Polyclonal de lapin anti-MCT1



Numéro de catalogue: 20139-1-AP

Phare

51 Publications

Informations de base

Numéro de catalogue:

20139-1-AP

Taille:

150ul, Concentration: 700 µg/ml by Nanodrop;

Hôte:

Lapin

Isotype:

IgG

Immunogen Catalog Number:

AG14098

Numéro d'acquisition GenBank:

BC026317

Identification du gène (NCBI):

6566

Nom complet:

solute carrier family 16, member 1 (monocarboxylic acid transporter 1)

MW calculé

500 aa, 54 kDa

MW observés:

38-45 kDa

Méthode de purification:

Purification par affinité contre l'antigène

Dilutions recommandées:

WB 1:3000-1:20000

IP 0.5-4.0 ug for IP and 1:200-1:1000 for WB

IHC 1:300-1:1200

IF 1:50-1:500

Applications

Applications testées:

IF, IHC, IP, WB, ELISA

Demandes citées:

FC, IF, IHC, WB

Spécificité de l'espèce:

Humain, souris

Espèces citées:

bovin, Humain, rat, souris

Remarque-IHC: il est suggéré de démasquer l'antigène avec un tampon de TE buffer pH 9,0; (*) À défaut, le démasquage de l'antigène peut être effectué avec un tampon citrate pH 6,0.

Contrôles positifs:

WB : cellules BxPC-3, cellules HeLa, cellules HepG2, cellules Jurkat, tissu cérébral de souris, tissu hépatique de souris

IP : cellules Raji,

IHC : tissu de cancer du côlon humain, tissu de cancer du col de l'utérus humain, tissu de cancer du sein humain

IF : cellules HeLa,

Informations générales

MCT1, the SLC16A1 gene product, is a trans-membrane symporter involved in lactate and pyruvate transportation. It plays an important role in lactic acid transport and H⁺ clearance in cancer cells. MCT overexpression had been observed in various cancers and may play an important role in tumorigenesis. Two isoforms of MCT1 exist due to the alternative splicing, with predicted MW of 54 kDa and 46 kDa, respectively. While western blot analysis detected MCT1 at an apparent molecular mass of 40-50 kDa.

Publications notables

Autrice	Pubmed ID	Journal	Application
Yantuanjin Ma	36372042	Placenta	IHC
Xiaoxin Zhang	33204328	Theranostics	WB,IHC
Akihiro Ryuge	34676828	JCI Insight	WB,IF

Stockage

Stockage:

Stocker à -20°C. Stable pendant un an après l'expédition.

Tampon de stockage:

PBS avec azoture de sodium à 0,02 % et glycérol à 50 % pH 7,3

L'aliquotage n'est pas nécessaire pour le stockage à -20C

***** Les 20ul contiennent 0,1% de BSA.**

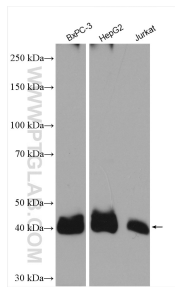
For technical support and original validation data for this product please contact:

T: 1 (888) 4PTGLAB (1-888-478-4522) (toll free in USA), or 1(312) 455-8498 (outside USA)

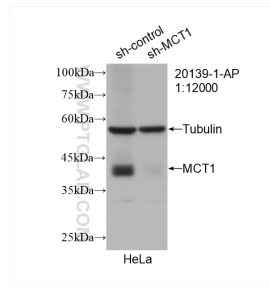
E: proteintech@ptglab.com
W: ptglab.com

This product is exclusively available under Proteintech Group brand and is not available to purchase from any other manufacturer.

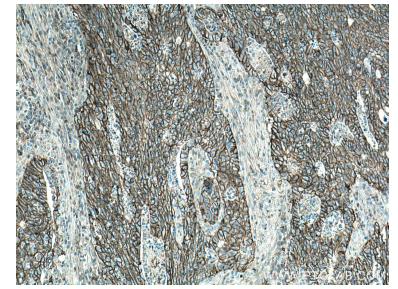
Données de validation sélectionnées



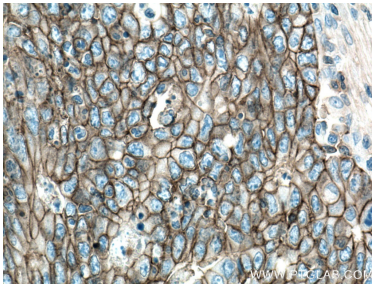
Various lysates were subjected to SDS PAGE followed by western blot with 20139-1-AP (MCT1 antibody) at dilution of 1:10000 incubated at room temperature for 1.5 hours.



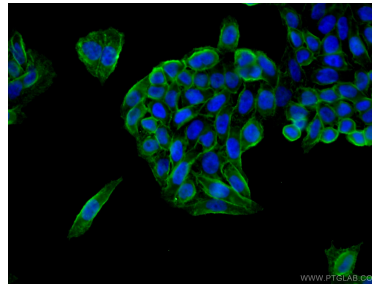
WB result of MCT1 antibody (20139-1-AP; 1:12000; incubated at room temperature for 1.5 hours) with sh-Control and sh-MCT1 transfected HeLa cells.



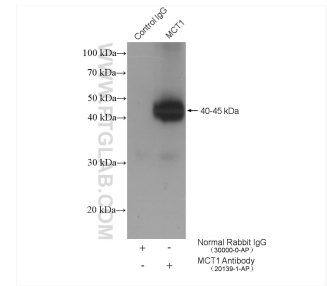
Immunohistochemical analysis of paraffin-embedded human colon cancer tissue slide using 20139-1-AP (MCT1 antibody) at dilution of 1:600 (under 10x lens. Heat mediated antigen retrieval with Tris-EDTA buffer (pH 9.0).



Immunohistochemical analysis of paraffin-embedded human colon cancer tissue slide using 20139-1-AP (MCT1 antibody) at dilution of 1:600 (under 40x lens. Heat mediated antigen retrieval with Tris-EDTA buffer (pH 9.0).



Immunofluorescent analysis of (4% PFA) fixed HeLa cells using 20139-1-AP (MCT1 antibody) at dilution of 1:50 and Coralite488-Conjugated AffiniPure Goat Anti-Rabbit IgG(H+L).



IP result of anti-MCT1 (IP:20139-1-AP, 4ug; Detection:20139-1-AP 1:300) with Raji cells lysate 3600 ug.