

À des fins de recherche uniquement

Anticorps Polyclonal de lapin anti-PTPN11/SHP2



Numéro de catalogue: 20145-1-AP

Phare

29 Publications

Informations de base

Numéro de catalogue:

20145-1-AP

Taille:

150ul, Concentration: 400 µg/ml by Nanodrop and 227 µg/ml by Bradford method using BSA as the standard;

Hôte:

Lapin

Isotype:

IgG

Immunogen Catalog Number:

AG13660

Numéro d'acquisition GenBank:

BC008692

Identification du gène (NCBI):

5781

Nom complet:

protein tyrosine phosphatase, non-receptor type 11

MW calculé

597 aa, 68 kDa

MW observés:

68-75 kDa

Méthode de purification:

Purification par affinité contre l'antigène

Dilutions recommandées:

WB 1:1000-1:6000

IP 0.5-4.0 ug for IP and 1:500-1:2000 for WB

IHC 1:100-1:400

IF 1:200-1:800

Applications

Applications testées:

IF, IHC, IP, WB, ELISA

Demandes citées:

Cell treatment, CoIP, IF, IHC, IP, WB

Spécificité de l'espèce:

Humain, rat, souris

Espèces citées:

Humain, rat, souris

Remarque-IHC: il est suggéré de démasquer l'antigène avec un tampon de TE buffer pH 9.0; (*) A défaut, 'le démasquage de l'antigène peut être effectué avec un tampon citrate pH 6,0.

Contrôles positifs:

WB : cellules A431, cellules A549, cellules HEK-293, cellules HeLa, cellules Jurkat, cellules MCF-7, cellules NIH/3T3, cellules U-937, tissu cardiaque humain, tissu cérébral humain

IP : cellules HEK-293,

IHC : tissu de cancer du sein humain, tissu cardiaque humain, tissu de gliome humain

IF : cellules HeLa,

Informations générales

PTPN11 (protein tyrosine phosphatase, non-receptor type 11) is also named as PTP-1D, PTP2, PTP2C, PTP3, SHP2, CFC, CFC, BPTP3, SH-PTP2, SH-PTP3, MGC14433 and belongs to the protein-tyrosine phosphatase family and non-receptor class 2 subfamily. It modulates and regulates signaling through numerous pathways, many of which are active in the developing endocardial cushions and implicated the ERK pathway as a central mechanism (PMID:19017799). Its signaling may play equally important roles in retinal survival in both physiological and pathological conditions (PMID:21576358). Defects in PTPN11 are the cause of LEOPARD syndrome type 1 (LEOPARD1), Noonan syndrome type 1 (NS1), juvenile myelomonocytic leukemia (JMML) and metachondromatosis (MC). It has 3 isoforms produced by alternative splicing.

Publications notables

Autrice	Pubmed ID	Journal	Application
Xiaoyan Xu	36153598	Parasit Vectors	WB, CoIP
Muhammad Zubair Saleem	33013353	Front Pharmacol	WB
Zhong-Qian Hu	26622699	Oncol Lett	WB, IHC

Stockage

Stockage:

Stocker à -20°C. Stable pendant un an après l'expédition.

Tampon de stockage:

PBS avec azoture de sodium à 0,02 % et glycérol à 50 % pH 7,3

L'aliquotage n'est pas nécessaire pour le stockage à -20C

*** Les 20ul contiennent 0,1% de BSA.

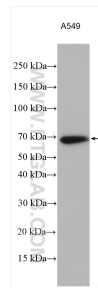
For technical support and original validation data for this product please contact:

T: 1 (888) 4PTGLAB (1-888-478-4522) (toll free in USA), or 1(312) 455-8498 (outside USA)

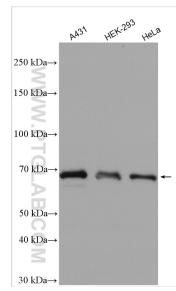
E: proteintech@ptglab.com
W: ptglab.com

This product is exclusively available under Proteintech Group brand and is not available to purchase from any other manufacturer.

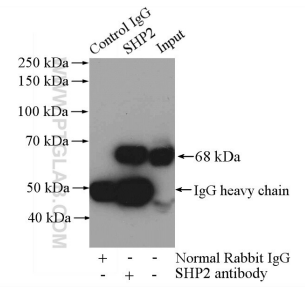
Données de validation sélectionnées



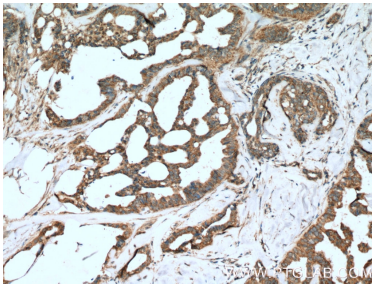
A549 cells were subjected to SDS PAGE followed by western blot with 20145-1-AP (SHP2 antibody) at dilution of 1:1000 incubated at room temperature for 1.5 hours.



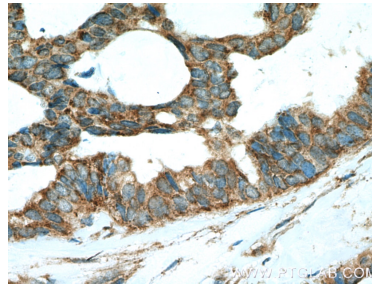
Various lysates were subjected to SDS PAGE followed by western blot with 20145-1-AP (SHP2 antibody) at dilution of 1:3000 incubated at room temperature for 1.5 hours.



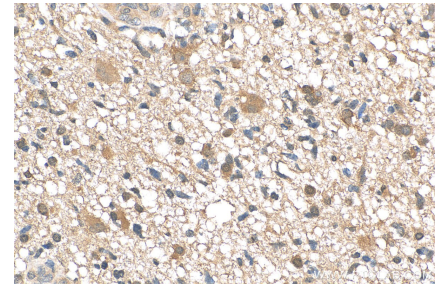
IP Result of anti-SHP2 (IP:20145-1-AP, 4ug; Detection:20145-1-AP 1:1000) with HEK-293 cells lysate 2800ug.



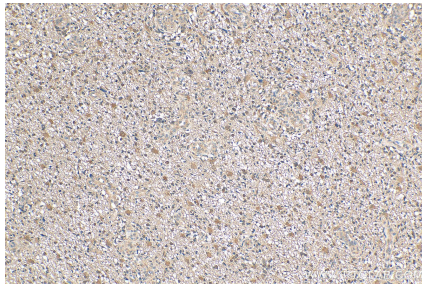
Immunohistochemical analysis of paraffin-embedded human breast cancer tissue slide using 20145-1-AP (SHP2 antibody) at dilution of 1:200 (under 10x lens). Heat mediated antigen retrieval with Tris-EDTA buffer (pH 9.0).



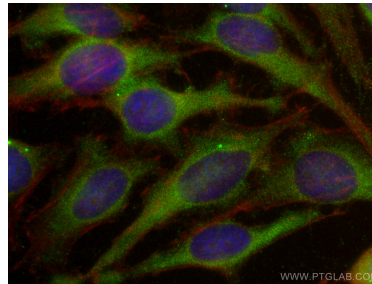
Immunohistochemical analysis of paraffin-embedded human breast cancer tissue slide using 20145-1-AP (SHP2 antibody) at dilution of 1:200 (under 40x lens). Heat mediated antigen retrieval with Tris-EDTA buffer (pH 9.0).



Immunohistochemical analysis of paraffin-embedded human gliomas tissue slide using 20145-1-AP (SHP2 antibody) at dilution of 1:200 (under 10x lens). Heat mediated antigen retrieval with Tris-EDTA buffer (pH 9.0).



Immunohistochemical analysis of paraffin-embedded human gliomas tissue slide using 20145-1-AP (SHP2 antibody) at dilution of 1:200 (under 10x lens). Heat mediated antigen retrieval with Tris-EDTA buffer (pH 9.0).



Immunofluorescent analysis of (-20°C Ethanol) fixed HeLa cells using SHP2 antibody (20145-1-AP) at dilution of 1:400 and CoraLite®488-Conjugated AffiniPure Goat Anti-Rabbit IgG(H+L), CL594-Phalloidin (red).