

À des fins de recherche uniquement

Anticorps Polyclonal de lapin anti-SMCR7L/MID51



Numéro de catalogue: 20164-1-AP

Phare

61 Publications

Informations de base

Numéro de catalogue:
20164-1-AP

Taille:
150ul, Concentration: 260 µg/ml by Nanodrop and 240 µg/ml by Bradford method using BSA as the standard;

Hôte:
Lapin

Isotype:
IgG

Immunogen Catalog Number:
AG13775

Numéro d'acquisition GenBank:
BC002587

Identification du gène (NCBI):
54471

Nom complet:
Smith-Magenis syndrome chromosome region, candidate 7-like

MW calculé
463 aa, 51 kDa

MW observés:
48-51 kDa

Méthode de purification:
Purification par affinité contre l'antigène

Dilutions recommandées:
WB 1:500-1:2000
IP 0.5-4.0 ug for IP and 1:500-1:2000 for WB

Applications

Applications testées:
IP, WB, ELISA

Demandes citées:
IF, IHC, IP, WB

Spécificité de l'espèce:
Humain, rat, souris

Espèces citées:
Humain, porc, rat, singe, souris

Contrôles positifs:

WB: cellules A549, cellules HEK-293T, cellules HT-1080, cellules NIH/3T3, RAW264.7, tissu cardiaque de souris, tissu hépatique de rat, tissu testiculaire de souris

IP: cellules RAW 264.7,

Informations générales

Human SMCR7L gene encodes, MID51, the mitochondrial dynamic protein of 51 kDa (also called mitochondrial elongation factor 1, MIEF1). MID51 is a single-pass membrane protein anchored to the mitochondrial outer membrane and regulates mitochondrial morphology. Mitochondrial morphology is controlled by two opposing processes: fusion and fission. Elevated MID51 levels induce extensive mitochondrial fusion, whereas depletion of MID51 causes mitochondrial fragmentation. MID51 interacts with and recruits Drp1 to mitochondria, suggesting a critical role of MID51 in regulation of mitochondrial fusion-fission machinery in vertebrates.

Publications notables

Autrice	Pubmed ID	Journal	Application
William T King	34529976	J Biol Chem	WB
Dandan Liu	36083519	Mol Neurobiol	WB
Di Hu	34489447	Nat Commun	WB

Stockage

Stockage:

Stocker à -20°C. Stable pendant un an après l'expédition.

Tampon de stockage:

PBS avec azoture de sodium à 0,02 % et glycérol à 50 % pH 7,3

L'aliquotage n'est pas nécessaire pour le stockage à -20C

*** Les 20ul contiennent 0,1% de BSA.

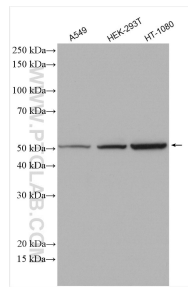
For technical support and original validation data for this product please contact:

T: 1 (888) 4PTGLAB (1-888-478-4522) (toll free in USA), or 1(312) 455-8498 (outside USA)

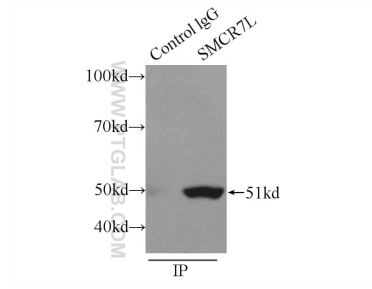
E: proteintech@ptglab.com
W: ptglab.com

This product is exclusively available under Proteintech Group brand and is not available to purchase from any other manufacturer.

Données de validation sélectionnées



Various lysates were subjected to SDS PAGE followed by western blot with 20164-1-AP (SMCR7L/MID51 antibody) at dilution of 1:1000 incubated at room temperature for 1.5 hours.



IP Result of anti-SMCR7L/MID51 (IP:20164-1-AP, 3ug; Detection:20164-1-AP 1:1000) with RAW 264.7 cells lysate 2400ug.