

À des fins de recherche uniquement

Anticorps Polyclonal de lapin anti-KGA-Specific



Numéro de catalogue: 20170-1-AP

Phare

14 Publications

Informations de base

Numéro de catalogue:
20170-1-AP

Taille:
150ul, Concentration: 1400 µg/ml by
Nanodrop and 707 µg/ml by Bradford
method using BSA as the standard;

Hôte:
Lapin

Isotype:
IgG

Immunogen Catalog Number:
AG14002

Numéro d'acquisition GenBank:
BC038507

Identification du gène (NCBI):

Nom complet:
glutaminase

MW calculé
669 aa, 73 kDa

MW observés:
66 kDa

Méthode de purification:
Purification par affinité contre
l'antigène

Dilutions recommandées:
WB 1:500-1:1000
IP 0.5-4.0 ug for IP and 1:500-1:1000
for WB
IHC 1:20-1:200
IF 1:20-1:400

Applications

Applications testées:
IF, IHC, IP, WB, ELISA

Demandes citées:
ColP, IF, IHC, WB

Spécificité de l'espèce:
Humain, rat, souris

Espèces citées:
Humain, rat, souris

Remarque-IHC: il est suggéré de démasquer l'antigène avec un tampon de TE buffer pH 9,0; (*) A défaut, 'le démasquage de l'antigène peut être 'effectué avec un tampon citrate pH 6,0.

Contrôles positifs:

WB : cellules HEK-293, cellules HeLa, cellules K-562, tissu cardiaque humain, tissu cérébral de rat, tissu cérébral de souris, tissu cérébral humain, tissu rénal de souris

IP : cellules HEK-293,

IHC : tissu rénal humain, tissu cérébral humain, tissu rénal de souris

IF : cellules HEK-293,

Informations générales

GLS, also named as GLS1 and KIAA0838, belongs to the glutaminase family. It catalyzes the first reaction in the primary pathway for the renal catabolism of glutamine. Glutaminase-, glutamate-, and taurine-immunoreactive neurons develop neurofibrillary tangles in Alzheimer's disease. The glutaminase band in AA/C1 cells is more intense than in HT29 cells, in accordance with measurements of glutaminase activity, and had the same molecular mass of approx 63 kDa. The bands for both cell lines are clearly different in size from both rat liver glutaminase (58 kDa) and rat kidney glutaminase (65 kDa)(PMID:12408749). It also reveals a molecular weight of 83-84 kDa as a phosphate-dependent glutaminase(PMID:447624;7512428). It has 3 isoforms produced by alternative splicing named as KGA, GAM, GAC. This antibody is specific to KGA.

Publications notables

Autrice	Pubmed ID	Journal	Application
Daniel Herranz	26390244	Nat Med	WB
Kalpana D Acharya	28955722	eNeuro	WB
Niki Marie Zacharias	29170516	Sci Rep	WB

Stockage

Stockage:

Stocker à -20°C. Stable pendant un an après l'expédition.

Tampon de stockage:

PBS avec azoture de sodium à 0,02 % et glycérol à 50 % pH 7,3

L'aliquotage n'est pas nécessaire pour le stockage à -20C

*** Les 20ul contiennent 0,1% de BSA.

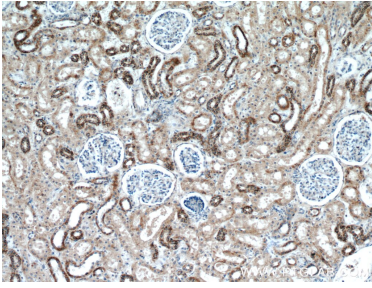
For technical support and original validation data for this product please contact:

T: 1 (888) 4PTGLAB (1-888-478-4522) (toll free in USA), or 1(312) 455-8498 (outside USA)

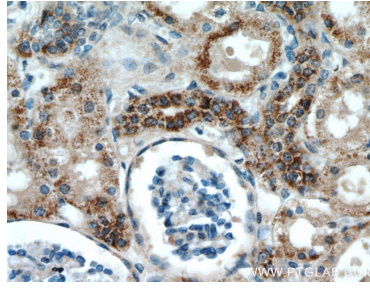
E: proteintech@ptglab.com
W: ptglab.com

This product is exclusively available under Proteintech Group brand and is not available to purchase from any other manufacturer.

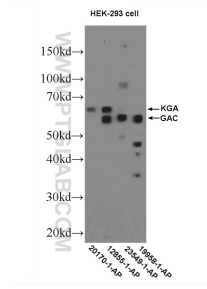
Données de validation sélectionnées



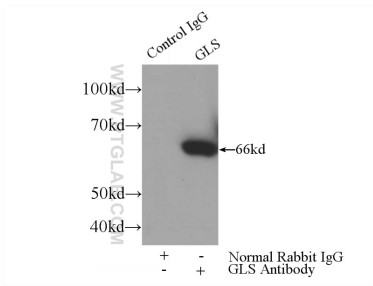
Immunohistochemical analysis of paraffin-embedded human kidney using 20170-1-AP (KGA-Specific antibody) at dilution of 1:100 (under 10x lens).



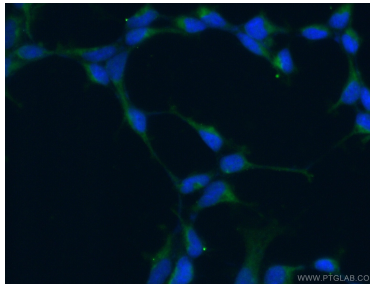
Immunohistochemical analysis of paraffin-embedded human kidney using 20170-1-AP (KGA-Specific antibody) at dilution of 1:100 (under 40x lens).



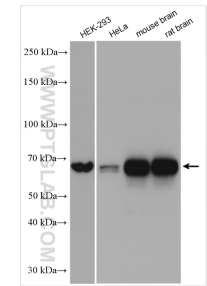
HEK-293 cells were subjected to SDS PAGE followed by western blot with 20170-1-AP (KGA-Specific antibody) at dilution of 1:600 incubated at 4 degree celsius over night.



IP Result of anti-KGA-Specific (IP:20170-1-AP, 3ug; Detection:20170-1-AP 1:800) with HEK-293 cells lysate 3200ug.



Immunofluorescent analysis of (-20°C Ethanol) fixed HEK-293 cells using 20170-1-AP (KGA-Specific antibody) at dilution of 1:50 and Alexa Fluor 488-conjugated AffiniPure Goat Anti-Rabbit IgG(H+L).



Various lysates were subjected to SDS PAGE followed by western blot with 20170-1-AP (KGA-Specific antibody) at dilution of 1:8000 incubated at room temperature for 1.5 hours.