

À des fins de recherche uniquement

# Anticorps Polyclonal de lapin anti-ROBO1-Specific



Numéro de catalogue: 20219-1-AP

Phare

15 Publications

## Informations de base

Numéro de catalogue:  
20219-1-AP

Taille:  
150µl, Concentration: 500 µg/ml by Nanodrop and 300 µg/ml by Bradford method using BSA as the standard;

Hôte:  
Lapin

Isotype:  
IgG

Numéro d'acquisition GenBank:  
NM\_002941

Identification du gène (NCBI):  
6091

Nom complet:  
roundabout, axon guidance receptor, homolog 1 (Drosophila)

MW calculé

181 kDa

MW observés:  
200 kDa

Méthode de purification:  
Purification par affinité contre l'antigène

Dilutions recommandées:  
WB 1:2000-1:10000

## Applications

Applications testées:  
WB, ELISA

Demandes citées:  
IF, IP, WB

Spécificité de l'espèce:  
Humain, rat, souris

Espèces citées:  
Humain, souris

Contrôles positifs:

WB : tissu cérébral de souris, tissu cérébral de rat

## Informations générales

ROBO1, also named as DUTT1, belongs to the immunoglobulin superfamily and ROBO family. It is a receptor for SLIT1 and SLIT2 which are thought to act as molecular guidance cue in cellular migration, including axonal navigation at the ventral midline of the neural tube and projection of axons to different regions during neuronal development. In axon growth cones, the silencing of the attractive effect of NTN1 by SLIT2 may require the formation of a ROBO1-DCC complex. It may be required for lung development. The antibody is specific to ROBO1.

## Publications notables

Autrice	Pubmed ID	Journal	Application
Tongtong Jiang	36250924	FASEB J	IF
Saumya Srivastava	33196021	iScience	WB
Jialing Chen	33068960	Placenta	WB

## Stockage

Stockage:

Stocker à -20°C. Stable pendant un an après l'expédition.

Tampon de stockage:

PBS avec azoture de sodium à 0,02 % et glycérol à 50 % pH 7,3

L'aliquotage n'est pas nécessaire pour le stockage à -20C

\*\*\* Les 20ul contiennent 0,1% de BSA.

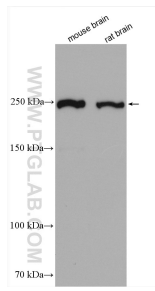
For technical support and original validation data for this product please contact:

T: 1 (888) 4PTGLAB (1-888-478-4522) (toll free in USA), or 1(312) 455-8498 (outside USA)

E: proteintech@ptglab.com  
W: ptglab.com

This product is exclusively available under Proteintech Group brand and is not available to purchase from any other manufacturer.

## Données de validation sélectionnées



Various lysates were subjected to SDS PAGE followed by western blot with 20219-1-AP (ROBO1-Specific antibody) at dilution of 1:8000 incubated at room temperature for 1.5 hours.