

À des fins de recherche uniquement

Anticorps Polyclonal de lapin anti-ARF1



Numéro de catalogue: 20226-1-AP

Phare

5 Publications

Informations de base

Numéro de catalogue:

20226-1-AP

Taille:

150ul, Concentration: 350 µg/ml by Nanodrop and 320 µg/ml by Bradford method using BSA as the standard;

Hôte:

Lapin

Isotype:

IgG

Numéro d'acquisition GenBank:

NM_001658

Identification du gène (NCBI):

375

Nom complet:

ADP-ribosylation factor 1

MW calculé

21 kDa

MW observés:

18-21 kDa

Méthode de purification:

Purification par affinité contre l'antigène

Dilutions recommandées:

WB 1:1000-1:4000

IP 0.5-4.0 ug for IP and 1:500-1:1000 for WB

IHC 1:50-1:500

IF 1:50-1:500

Applications

Applications testées:

FC, IF, IHC, IP, WB, ELISA

Demandes citées:

IF, WB

Spécificité de l'espèce:

Humain, souris

Espèces citées:

Humain, souris

Remarque-IHC: il est suggéré de démasquer l'antigène avec un tampon de TE buffer pH 9,0; (*) À défaut, le démasquage de l'antigène peut être effectué avec un tampon citrate pH 6,0.

Contrôles positifs:

WB : cellules DU 145, cellules HEK-293, cellules HeLa, cellules HepG2, cellules SKOV-3, tissu cérébral de souris

IP : cellules HeLa,

IHC : tissu de cancer du sein humain, tissu cérébral humain, tissu de cancer du côlon humain, tissu hépatique humain

IF : cellules HepG2,

Informations générales

ADP-ribosylation factors (ARFs) are members of the ARF family of GTP-binding proteins of the Ras superfamily, with 20kda protein size. ARFs bind and regulate GTP/GDP cycle by alternating between the active GTP-bound and inactive GDP-bound conformations. ARF family proteins are essential and ubiquitous in eukaryotes. Six highly conserved members of the family have been identified in mammalian cells. They function in vesicular traffic and actin remodelling and other bioprocesses in cells. The ARF1 protein is localized to the Golgi apparatus and has a central role in intra-Golgi transport. It mainly functions in coat recruitment. (PMID: 7759471, PMID: 16042562). The antibody is specific to ARF1.

Publications notables

Autrice	Pubmed ID	Journal	Application
Tao Wang	28985237	PLoS Pathog	WB
Yuanyuan Su	29420297	J Cell Sci	WB,IF
Miwa Sasai	28604719	Nat Immunol	WB

Stockage

Stockage:

Stocker à -20°C. Stable pendant un an après l'expédition.

Tampon de stockage:

PBS avec azoture de sodium à 0,02 % et glycérol à 50 % pH 7,3

L'aliquotage n'est pas nécessaire pour le stockage à -20C

*** Les 20ul contiennent 0,1% de BSA.

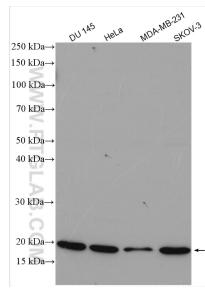
For technical support and original validation data for this product please contact:

T: 1 (888) 4PTGLAB (1-888-478-4522) (toll free in USA), or 1(312) 455-8498 (outside USA)

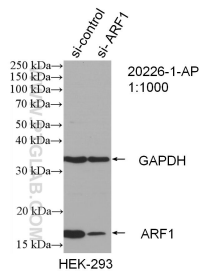
E: proteintech@ptglab.com
W: ptglab.com

This product is exclusively available under Proteintech Group brand and is not available to purchase from any other manufacturer.

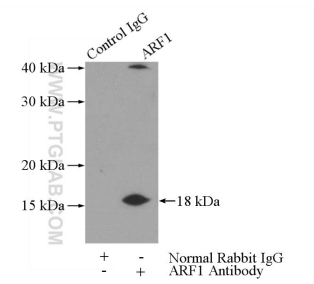
Données de validation sélectionnées



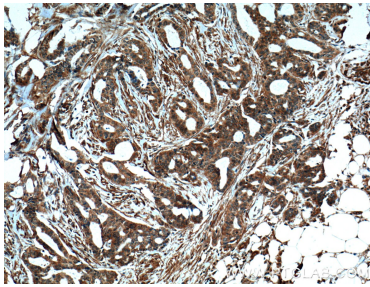
Various lysates were subjected to SDS PAGE followed by western blot with 20226-1-AP (ARF1 antibody) at dilution of 1:2000 incubated at room temperature for 1.5 hours.



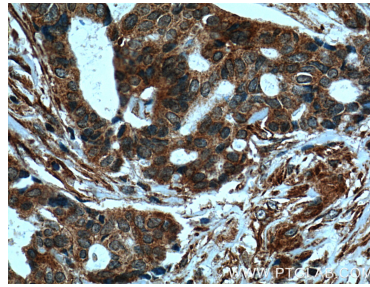
WB result of ARF1 antibody (20226-1-AP; 1:1000; incubated at room temperature for 1.5 hours) with sh-Control and sh-ARF1 transfected HEK-293 cells.



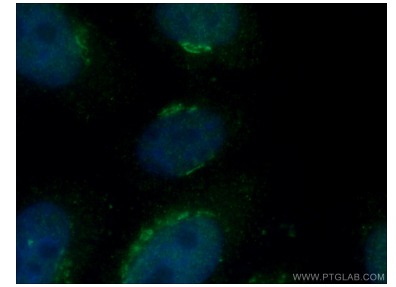
IP Result of anti-ARF1 (IP:20226-1-AP, 3ug; Detection:20226-1-AP 1:600) with HeLa cells lysate 2440ug.



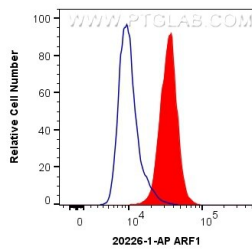
Immunohistochemical analysis of paraffin-embedded human breast cancer tissue slide using 20226-1-AP (ARF1 Antibody) at dilution of 1:200 (under 10x lens). Heat mediated antigen retrieval with Tris-EDTA buffer (pH 9.0).



Immunohistochemical analysis of paraffin-embedded human breast cancer tissue slide using 20226-1-AP (ARF1 Antibody) at dilution of 1:200 (under 40x lens). Heat mediated antigen retrieval with Tris-EDTA buffer (pH 9.0).



Immunofluorescent analysis of (4% PFA) fixed HepG2 cells using 20226-1-AP (ARF1 antibody) at dilution of 1:50 and Alexa Fluor 488-conjugated AffiniPure Goat Anti-Rabbit IgG(H+L).



1x10⁶ HeLa cells were intracellularly stained with 0.4 ug Anti-Human ARF1 (20226-1-AP) and CoraLite®488-Conjugated AffiniPure Goat Anti-Rabbit IgG(H+L) at dilution 1:1000 (red), or 0.4 ug Control Antibody. Cells were fixed with 4% PFA and permeabilized with Flow Cytometry Perm Buffer (PF00011-C).