

À des fins de recherche uniquement

Anticorps Polyclonal de lapin anti-RAB11A-Specific



Numéro de catalogue: 20229-1-AP

Phare

15 Publications

Informations de base

Numéro de catalogue:

20229-1-AP

Taille:

150ul, Concentration: 300 µg/ml by Nanodrop and 253 µg/ml by Bradford method using BSA as the standard;

Hôte:

Lapin

Isotype:

IgG

Numéro d'acquisition GenBank:

NM_004663

Identification du gène (NCBI):

8766

Nom complet:

RAB11A, member RAS oncogene family

MW calculé

24 kDa

MW observés:

24 kDa

Méthode de purification:

Purification par affinité contre l'antigène

Dilutions recommandées:

WB 1:500-1:1000

IP 0.5-4.0 µg for IP and 1:500-1:1000 for WB

IHC 1:50-1:500

IF 1:50-1:500

Applications

Applications testées:

IF, IHC, IP, WB, ELISA

Demandes citées:

IF, IHC, WB

Spécificité de l'espèce:

Humain, rat, souris

Espèces citées:

canin, Humain, rat, souris

Remarque-IHC: il est suggéré de démasquer l'antigène avec un tampon de TE buffer pH 9,0; (*) À défaut, le démasquage de l'antigène peut être effectué avec un tampon citrate pH 6,0.

Contrôles positifs:

WB : cellules HEK-293T, cellules HeLa, cellules MCF-7, cellules PC-12, cellules SH-SY5Y, tissu cérébral de rat, tissu cérébral humain, tissu de côlon de souris, tissu pulmonaire de souris

IP : cellules SH-SY5Y,

IHC : tissu d'intestin grêle humain,

IF : cellules HeLa, cellules IMCD3

Informations générales

Rab11a, Rab11b and Rab25 comprise a subfamily of Rab proteins that belong to the Ras-related small GTPase protein superfamily (PMID: 8074219, PMID: 10708602). Rab11 proteins are involved in endocytosis and plasma membrane recycling in non-polarized and polarized cells (PMID: 8638719, PMID: 8922376). Rab11a and Rab11b are ubiquitously expressed in most tissues, while Rab25 is only expressed in epithelial cells. Rab11a is known to regulate the recycling of internalized cell surface proteins and receptors from the early endosome through the trans-Golgi network (PMID: 11121436, PMID: 9600939). The antibody is specific to RAB11A, and has no cross reaction to RAB11B.

Publications notables

Autrice	Pubmed ID	Journal	Application
Ketaki Ganti	34473799	PLoS Pathog	IF
Hiroshi Gomi	28914590	J Histochem Cytochem	WB,IHC
Oliva Palander	33124112	FASEB J	IF

Stockage

Stockage:

Stocker à -20°C. Stable pendant un an après l'expédition.

Tampon de stockage:

PBS avec azoture de sodium à 0,02 % et glycérol à 50 % pH 7,3

L'aliquotage n'est pas nécessaire pour le stockage à -20C

*** Les 20ul contiennent 0,1% de BSA.

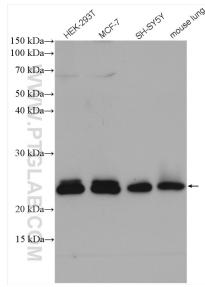
For technical support and original validation data for this product please contact:

T: 1 (888) 4PTGLAB (1-888-478-4522) (toll free in USA), or 1(312) 455-8498 (outside USA)

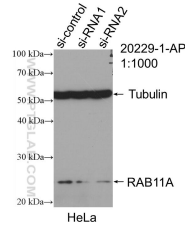
E: proteintech@ptglab.com
W: ptglab.com

This product is exclusively available under Proteintech Group brand and is not available to purchase from any other manufacturer.

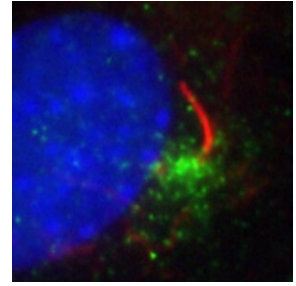
Données de validation sélectionnées



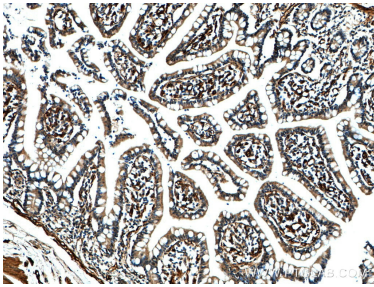
Various lysates were subjected to SDS PAGE followed by western blot with 20229-1-AP (RAB11A-Specific antibody) at dilution of 1:600 incubated at room temperature for 1.5 hours.



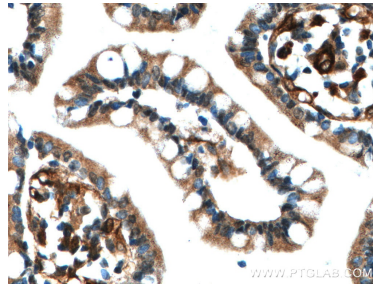
WB result of RAB11A-Specific antibody (20229-1-AP; 1:1000; incubated at room temperature for 1.5 hours) with sh-Control and sh-RAB11A-Specific transfected HeLa cells.



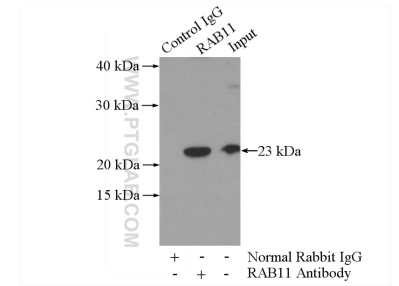
IF result of 20229-1-AP (anti-RAB11A-Specific, Green) in ciliated IMCD3 cells by Dr. Seongjin Seo. (Red is the primary cilium, and blue is the nucleus).



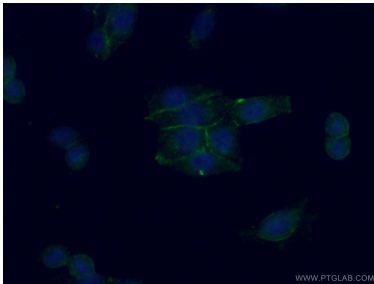
Immunohistochemical analysis of paraffin-embedded human small intestine tissue slide using 20229-1-AP (RAB11A-Specific antibody) at dilution of 1:200 (under 10x lens).



Immunohistochemical analysis of paraffin-embedded human small intestine tissue slide using 20229-1-AP (RAB11A-Specific antibody) at dilution of 1:200 (under 40x lens).



IP Result of anti-RAB11A-Specific (IP:20229-1-AP, 3ug; Detection:20229-1-AP 1:700) with SH-SY5Y cells lysate 3000ug.



Immunofluorescent analysis of (-20°C Ethanol) fixed HeLa cells using 20229-1-AP (RAB11A-Specific antibody) at dilution of 1:50 and Alexa Fluor 488-Conjugated AffiniPure Goat Anti-Rabbit IgG(H+L).