

À des fins de recherche uniquement

Anticorps Polyclonal de lapin anti-ITGA6X1A



Numéro de catalogue: 20231-1-AP

Informations de base

| | | |
|--|---|--|
| Numéro de catalogue: 20231-1-AP | Numéro d'acquisition GenBank: NM_000210 | Méthode de purification: Purification par affinité contre l'antigène |
| Taille: 150ul , Concentration: 173 µg/ml by Bradford method using BSA as the standard; | Identification du gène (NCBI): 3655 | Dilutions recommandées: WB 1:200-1:1000 |
| Hôte: Lapin | Nom complet: integrin, alpha 6 | |
| Isotype: IgG | MW calculé: 127 kDa | |
| | MW observés: 100 kDa, 150 kDa | |

Applications

| | |
|---|--|
| Applications testées: WB, ELISA | Contrôles positifs: WB : tissu splénique de souris, tissu de côlon de souris |
| Spécificité de l'espèce: Humain, souris | |

Informations générales

ITGA6, also named as CD49f and VLA-6, belongs to the integrin alpha chain family. It is a receptor for laminin on platelets. ITGA6 is a receptor for laminin in epithelial cells and it plays a critical structural role in the hemidesmosome. Defects in ITGA6 are a cause of epidermolysis bullosa letalis with pyloric atresia (EB-PA) which also known as junctional epidermolysis bullosa with pyloric atresia (PA-JEB) or aplasia cutis congenita with gastrointestinal atresia. The antibody is specific to isoform Alpha-6X1A, isoform Alpha-6X2A, isoform Alpha-6X1X2A isoform7 and isoform9 of ITGA6.

Stockage

Stockage:
Stocker à -20°C. Stable pendant un an après l'expédition.
Tampon de stockage:
PBS avec azoture de sodium à 0,02 % et glycérol à 50 % pH 7,3
L'aliquotage n'est pas nécessaire pour le stockage à -20C

*** Les 20ul contiennent 0,1% de BSA.

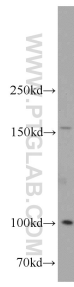
For technical support and original validation data for this product please contact:

T: 1 (888) 4PTGLAB (1-888-478-4522) (toll free in USA), or 1(312) 455-8498 (outside USA)

E: proteintech@ptglab.com
W: ptglab.com

This product is exclusively available under Proteintech Group brand and is not available to purchase from any other manufacturer.

Données de validation sélectionnées



mouse spleen tissue were subjected to SDS PAGE followed by western blot with 20231-1-AP (ITGA6-Specific antibody) at dilution of 1:300 incubated at room temperature for 1.5 hours.