

À des fins de recherche uniquement

Anticorps Polyclonal de lapin anti-TOP2A-Specific



Numéro de catalogue: 20233-1-AP

Phare

16 Publications

Informations de base

Numéro de catalogue:

20233-1-AP

Taille:

150ul, Concentration: 450 µg/ml by Nanodrop;

Hôte:

Lapin

Isotype:

IgG

Numéro d'acquisition GenBank:

NM_001067

Identification du gène (NCBI):

7153

Nom complet:

topoisomérase (DNA) II alpha 170kDa

MW calculé

174 kDa

MW observés:

170-177 kDa

Méthode de purification:

Purification par affinité contre l'antigène

Dilutions recommandées:

WB 1:500-1:3000

IP 0.5-4.0 µg for IP and 1:500-1:1000 for WB

IHC 1:20-1:200

IF 1:10-1:100

Applications

Applications testées:

IF, IHC, IP, WB, ELISA

Demandes citées:

IF, IHC, WB

Spécificité de l'espèce:

Humain

Espèces citées:

Humain, souris

Contrôles positifs:

WB : cellules HeLa, cellules A431, cellules HepG2, cellules LO2

IP : cellules HeLa,

IHC : tissu splénique humain, tissu testiculaire de souris

IF : cellules HepG2,

Remarque-IHC: il est suggéré de démasquer l'antigène avec un tampon de TE buffer pH 9,0; (*) À défaut, le démasquage de l'antigène peut être effectué avec un tampon citrate pH 6,0.

Informations générales

TOP2A, also named as TOP2, belongs to the type II topoisomerase family. Topoisomerase II makes double-strand breaks. TOP2 control the topological states of DNA by transient breakage and subsequent rejoining of DNA strands. TOP2A may play a role in regulating the period length of ARNTL/BMAL1 transcriptional oscillation. DNA topoisomerase IIa (170 kDa, TOP2a/170) is essential in proliferating cells by resolving DNA topological entanglements during chromosome condensation, replication, and segregation.

Publications notables

Autrice	Pubmed ID	Journal	Application
Yi Fang	31662984	Biomed Res Int	WB
Xuefeng Li	25237769	Oncotarget	WB
Carlo Cattrini	33091733	Cancer Treat Res Commun	WB

Stockage

Stockage:

Stocker à -20°C. Stable pendant un an après l'expédition.

Tampon de stockage:

PBS avec azoture de sodium à 0,02 % et glycérol à 50 % pH 7,3

L'aliquotage n'est pas nécessaire pour le stockage à -20C

*** Les 20ul contiennent 0,1% de BSA.

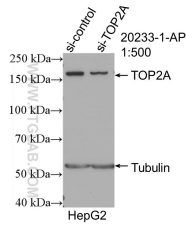
For technical support and original validation data for this product please contact:

T: 1 (888) 4PTGLAB (1-888-478-4522) (toll free in USA), or 1(312) 455-8498 (outside USA)

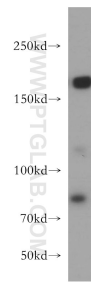
E: proteintech@ptglab.com
W: ptglab.com

This product is exclusively available under Proteintech Group brand and is not available to purchase from any other manufacturer.

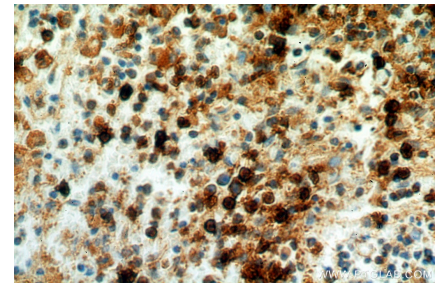
Données de validation sélectionnées



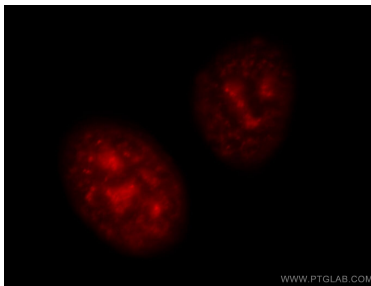
WB result of TOP2A-specific antibody (20233-1-AP; 1:500; incubated at room temperature for 1.5 hours) with sh-Control and sh-TOP2A-Specific transfected HepG2 cells.



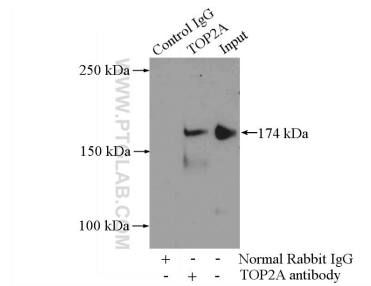
HeLa cells were subjected to SDS PAGE followed by western blot with 20233-1-AP (TOP2A-Specific antibody) at dilution of 1:400 incubated at room temperature for 1.5 hours.



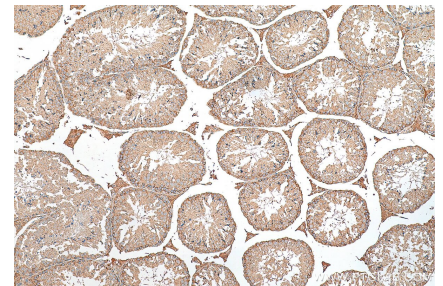
Immunohistochemical analysis of paraffin-embedded human spleen using 20233-1-AP (TOP2A-Specific antibody) at dilution of 1:100 (under 40x lens).



Immunofluorescent analysis of HepG2 cells, using TOP2A antibody 20233-1-AP at 1:25 dilution and Rhodamine-labeled goat anti-rabbit IgG (red).



IP Result of anti-TOP2A-Specific (IP:20233-1-AP, 4ug; Detection:20233-1-AP 1:500) with HeLa cells lysate 2000ug.



Immunohistochemical analysis of paraffin-embedded mouse testis tissue slide using 20233-1-AP (TOP2A-Specific antibody) at dilution of 1:200 (under 10x lens). Heat mediated antigen retrieval with Tris-EDTA buffer (pH 9.0).