

À des fins de recherche uniquement

# Anticorps Polyclonal de lapin anti-CSNK2B-specific



Numéro de catalogue: 20234-1-AP

Phare

8 Publications

## Informations de base

Numéro de catalogue:

20234-1-AP

Numéro d'acquisition GenBank:

NM\_001320

Méthode de purification:

Purification par affinité contre l'antigène

Taille:

150ul, Concentration: 240 µg/ml by Nanodrop and 200 µg/ml by Bradford method using BSA as the standard;

Identification du gène (NCBI):

1460

Dilutions recommandées:

WB 1:500-1:3000

IHC 1:50-1:500

Hôte:

Lapin

MW calculé

25 kDa

Isotype:

IgG

MW observés:

25 kDa

## Applications

Applications testées:

FC, IHC, WB, ELISA

Demandes citées:

IF, IHC, WB

Spécificité de l'espèce:

Humain

Espèces citées:

Humain, souris

**Remarque-IHC: il est suggéré de démasquer l'antigène avec un tampon de TE buffer pH 9,0; (\*) À défaut, le démasquage de l'antigène peut être effectué avec un tampon citrate pH 6,0.**

Contrôles positifs:

WB : cellules HepG2, cellules A431, cellules HeLa, cellules MCF-7

IHC : tissu de cancer du sein humain,

## Informations générales

CSNK2B, also named as CK2N, G5A and CK II beta, belongs to the casein kinase 2 subunit beta family. CSNK2B participates in Wnt signaling. It plays a complex role in regulating the basal catalytic activity of the alpha subunit. The antibody is specific to CSNK2B.

## Publications notables

Autrice	Pubmed ID	Journal	Application
Yuan Fang	35584581	Phytomedicine	WB
Lijun Dai	34381332	Front Mol Neurosci	WB,IF
Ming Kong	34454163	Redox Biol	WB

## Stockage

Stockage:

Stocker à -20°C. Stable pendant un an après l'expédition.

Tampon de stockage:

PBS avec azoture de sodium à 0,02 % et glycérol à 50 % pH 7,3

L'aliquotage n'est pas nécessaire pour le stockage à -20C

\*\*\* Les 20ul contiennent 0,1% de BSA.

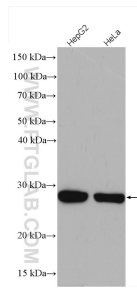
For technical support and original validation data for this product please contact:

T: 1 (888) 4PTGLAB (1-888-478-4522) (toll free in USA), or 1(312) 455-8498 (outside USA)

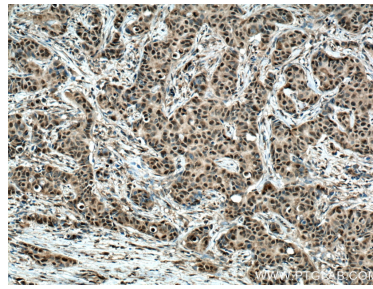
E: proteintech@ptglab.com  
W: ptglab.com

This product is exclusively available under Proteintech Group brand and is not available to purchase from any other manufacturer.

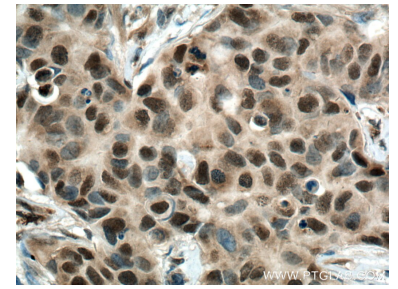
## Données de validation sélectionnées



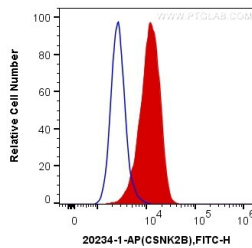
Various lysates were subjected to SDS PAGE followed by western blot with 20234-1-AP (CSNK2B-specific antibody) at dilution of 1:1500 incubated at room temperature for 1.5 hours.



Immunohistochemical analysis of paraffin-embedded human breast cancer tissue slide using 20234-1-AP (CSNK2B-specific antibody) at dilution of 1:200 (under 10x lens. Heat mediated antigen retrieval with Tris-EDTA buffer (pH 9.0).



Immunohistochemical analysis of paraffin-embedded human breast cancer tissue slide using 20234-1-AP (CSNK2B-specific antibody) at dilution of 1:200 (under 40x lens. Heat mediated antigen retrieval with Tris-EDTA buffer (pH 9.0).



1X10<sup>6</sup> HeLa cells were intracellularly stained with 0.2 ug Anti-Human CSNK2B-specific (20234-1-AP) and CoraLite®488-Conjugated AffiniPure Goat Anti-Rabbit IgG(H+L) at dilution 1:1000 (red), or 0.2 ug Control Antibody. Cells were fixed with 4% PFA and permeabilized with Flow Cytometry Perm Buffer (PF00011-C).