

À des fins de recherche uniquement

# Anticorps Polyclonal de lapin anti-IGF2R-Specific



Numéro de catalogue: 20253-1-AP

16 Publications

## Informations de base

Numéro de catalogue:

20253-1-AP

Taille:

150ul, Concentration: 700 µg/ml by Nanodrop;

Hôte:

Lapin

Isotype:

IgG

Numéro d'acquisition GenBank:

NM\_000876

Identification du gène (NCBI):

3482

Nom complet:

insulin-like growth factor 2 receptor

MW calculé

274 kDa

MW observés:

300 kDa

Méthode de purification:

Purification par affinité contre l'antigène

Dilutions recommandées:

WB 1:1000-1:6000

IP 0.5-4.0 µg for IP and 1:500-1:1000 for WB

IHC 1:20-1:200

IF 1:20-1:200

## Applications

Applications testées:

FC, IF, IHC, IP, WB, ELISA

Demandes citées:

IF, IHC, WB

Spécificité de l'espèce:

Humain

Espèces citées:

bovin, Humain, rat, souris

Contrôles positifs:

WB : cellules A431, cellules HepG2, cellules L02

IP : cellules HepG2,

IHC : tissu de cancer du foie humain, tissu hépatique humain

IF : cellules HepG2,

**Remarque-IHC: il est suggéré de démasquer l'antigène avec un tampon de TE buffer pH 9.0; (\*) À défaut, le démasquage de l'antigène peut être effectué avec un tampon citrate pH 6,0.**

## Informations générales

IGF2R, also named as MPRI, CI Man-6-P receptor, CI-MPR, M6PR, IGF-II receptor, M6P/IGF2R, MPR 300 and CD222, belongs to the MRL1/IGF2R family. IGF2R transports of phosphorylated lysosomal enzymes from the Golgi complex and the cell surface to lysosomes. IGF2R is a lysosomal enzyme bearing phosphomannosyl residues bind specifically to mannose-6-phosphate receptors in the Golgi apparatus and the resulting receptor-ligand complex is transported to an acidic prelysosomal compartment where the low pH mediates the dissociation of the complex. This receptor also binds IGF2. IGF2R acts as a positive regulator of T-cell coactivation, by binding DPP4. The antibody is specific to IGF2R.

## Publications notables

Autrice	Pubmed ID	Journal	Application
Weichao Zhang	36096887	Nat Commun	WB
Ya Hui	36302455	Metabolism	WB,IF
Bing Liu	36299463	Front Endocrinol (Lausanne)	IHC

## Stockage

Stockage:

Stocker à -20°C. Stable pendant un an après l'expédition.

Tampon de stockage:

PBS avec azoture de sodium à 0,02 % et glycérol à 50 % pH 7,3

L'aliquotage n'est pas nécessaire pour le stockage à -20C

\*\*\* Les 20ul contiennent 0,1% de BSA.

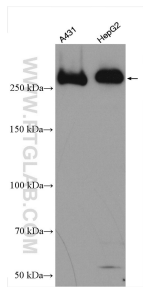
For technical support and original validation data for this product please contact:

T: 1 (888) 4PTGLAB (1-888-478-4522) (toll free in USA), or 1(312) 455-8498 (outside USA)

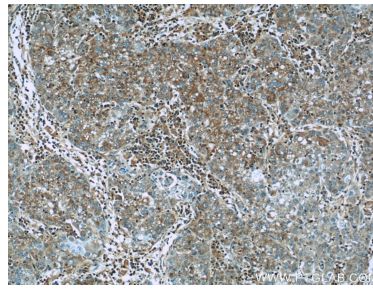
E: proteintech@ptglab.com  
W: ptglab.com

This product is exclusively available under Proteintech Group brand and is not available to purchase from any other manufacturer.

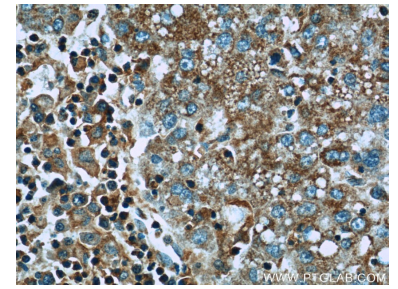
## Données de validation sélectionnées



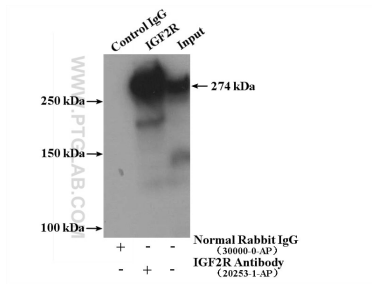
Various lysates were subjected to SDS PAGE followed by western blot with 20253-1-AP (IGF2R-Specific antibody) at dilution of 1:3000 incubated at room temperature for 1.5 hours.



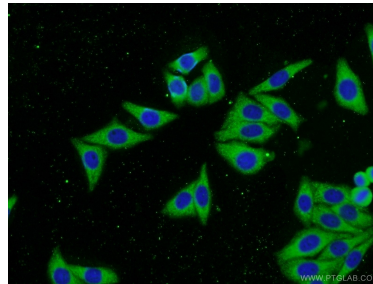
Immunohistochemical analysis of paraffin-embedded human liver cancer slide using 20253-1-AP (IGF2R-Specific Antibody) at dilution of 1:50.



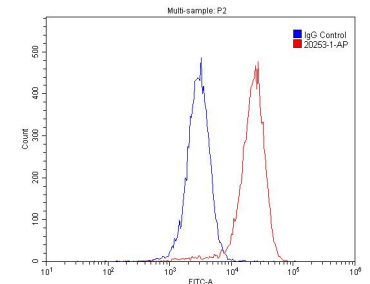
Immunohistochemical analysis of paraffin-embedded human liver cancer slide using 20253-1-AP (IGF2R-Specific Antibody) at dilution of 1:50.



IP Result of anti-IGF2R-Specific (IP:20253-1-AP, 4ug; Detection:20253-1-AP 1:500) with HepG2 cells lysate 3480ug.



Immunofluorescent analysis of HepG2 cells using 20253-1-AP (IGF2R-Specific antibody) at dilution of 1:50 and Alexa Fluor 488-conjugated AffiniPure Goat Anti-Rabbit IgG(H+L).



$1 \times 10^6$  HepG2 cells were stained with .2ug IGF2R-Specific antibody (20253-1-AP, red) and control antibody (blue). Alexa Fluor 488-conjugated AffiniPure Goat Anti-Rabbit IgG(H+L) with dilution 1:1500. Cells were fixed with 4% PFA and permeabilized with 0.1% Triton X-100.