

À des fins de recherche uniquement

Anticorps Polyclonal de lapin anti-IGF1R Beta Chain



Numéro de catalogue: 20254-1-AP

Phare

41 Publications

Informations de base

Numéro de catalogue:

20254-1-AP

Taille:

150ul, Concentration: 500 µg/ml by Nanodrop and 360 µg/ml by Bradford method using BSA as the standard;

Hôte:

Lapin

Isotype:

IgG

Numéro d'acquisition GenBank:

NM_000875

Identification du gène (NCBI):

3480

Nom complet:

IGF I receptor

MW calculé

155 kDa

MW observés:

100 kDa

Méthode de purification:

Purification par affinité contre l'antigène

Dilutions recommandées:

WB 1:500-1:2000

IP 0.5-4.0 µg for IP and 1:200-1:1000 for WB

IHC 1:100-1:400

Applications

Applications testées:

IHC, IP, WB, ELISA

Demandes citées:

IF, IHC, IP, WB

Spécificité de l'espèce:

Humain, rat, souris

Espèces citées:

Humain, porc, rat, souris

Remarque-IHC: il est suggéré de démasquer l'antigène avec un tampon de TE buffer pH 9,0; (*) À défaut, le démasquage de l'antigène peut être effectué avec un tampon citrate pH 6,0.

Contrôles positifs:

WB : cellules HeLa, cellules L02

IP : cellules HeLa,

IHC : tissu de cancer du poumon humain,

Informations générales

IGF1R, also named as CD221, is a receptor tyrosine kinase which mediates actions of INS-like growth factor 1 (IGF1). IGF1R binds IGF1 with high affinity and IGF2 and INS with a lower affinity, the activated IGF1R is involved in cell growth and survival control. It is crucial for tumor transformation and survival of malignant cell. IGF1R is a heterotetrameric receptor, composed of two alpha subunits (130 kDa each) and two beta subunits (~98 kDa each) (PMID: 6279656). Both the alpha and beta subunits are synthesized from a single mRNA precursor. The precursor is then glycosylated, proteolytically cleaved, and crosslinked by cysteine bonds. This antibody raised against a synthesized polypeptide (CGVLVLRASFDERQPYAH) corresponding to 1332-1348aa of human IGF1R protein recognizes beta subunit of IGF1R.

Publications notables

Autrice	Pubmed ID	Journal	Application
YanHua Fan	36174847	Fitoterapia	WB
Kuanyu Wang	31807171	Oncol Lett	WB
Zhanxia Li	30454699	Biochem Biophys Res Commun	WB

Stockage

Stockage:

Stocker à -20°C. Stable pendant un an après l'expédition.

Tampon de stockage:

PBS avec azoture de sodium à 0,02 % et glycérol à 50 % pH 7,3

L'aliquotage n'est pas nécessaire pour le stockage à -20C

*** Les 20ul contiennent 0,1% de BSA.

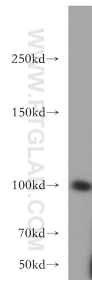
For technical support and original validation data for this product please contact:

T: 1 (888) 4PTGLAB (1-888-478-4522) (toll free in USA), or 1(312) 455-8498 (outside USA)

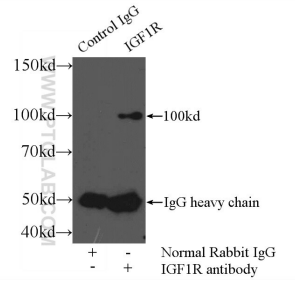
E: proteintech@ptglab.com
W: ptglab.com

This product is exclusively available under Proteintech Group brand and is not available to purchase from any other manufacturer.

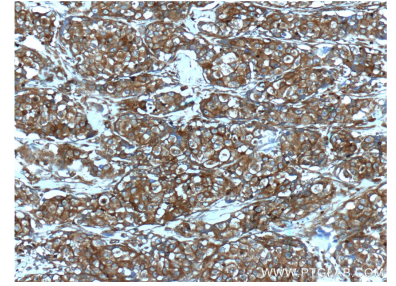
Données de validation sélectionnées



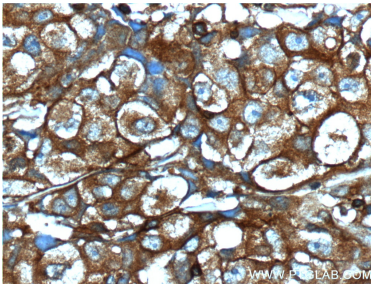
HeLa cells were subjected to SDS PAGE followed by western blot with 20254-1-AP (IGF1R beta chain antibody) at dilution of 1:400 incubated at room temperature for 1.5 hours.



IP Result of anti-IGF1R beta chain (IP:20254-1-AP, 4ug; Detection:20254-1-AP 1:300) with HeLa cells lysate 2400ug.



Immunohistochemical analysis of paraffin-embedded human lung cancer tissue slide using 20254-1-AP (IGF1R beta chain antibody at dilution of 1:200 (under 10x lens).



Immunohistochemical analysis of paraffin-embedded human lung cancer tissue slide using 20254-1-AP (IGF1R beta chain antibody at dilution of 1:200 (under 40x lens).