

À des fins de recherche uniquement

# Anticorps Polyclonal de lapin anti-ADAM17-Specific



Numéro de catalogue: 20259-1-AP

2 Publications

## Informations de base

<b>Numéro de catalogue:</b> 20259-1-AP	<b>Numéro d'acquisition GenBank:</b> NM_003183	<b>Méthode de purification:</b> Purification par affinité contre l'antigène
<b>Taille:</b> 150ul , Concentration: 350 µg/ml by Nanodrop and 227 µg/ml by Bradford method using BSA as the standard;	<b>Identification du gène (NCBI):</b> 6868	<b>Dilutions recommandées:</b> WB 1:500-1:1000 IHC 1:20-1:200
<b>Hôte:</b> Lapin	<b>Nom complet:</b> ADAM metallopeptidase domain 17	
<b>Isotype:</b> IgG	<b>MW calculé:</b> 93 kDa	
	<b>MW observés:</b> 29 kDa	

## Applications

<b>Applications testées:</b> IHC, WB, ELISA	<b>Contrôles positifs:</b> WB : tissu placentaire humain, IHC : tissu de cancer du pancréas humain,
<b>Demandes citées:</b> IF, IHC, WB	
<b>Spécificité de l'espèce:</b> Humain	
<b>Espèces citées:</b> Humain	

**Remarque-IHC: il est suggéré de démasquer l'antigène avec un tampon de TE buffer pH 9,0; (\*) À défaut, le démasquage de l'antigène peut être effectué avec un tampon citrate pH 6,0.**

## Informations générales

The ADAMs (A Disintegrin And Metalloprotease) are multidomain transmembrane proteins. One of the first ADAMs implicated in membrane shedding is ADAM-17, which is shown to release the active form of tumor necrosis factor (TNF)-α from its precursor (PMID:18238782). ADAM17 is also named as CSVP, TACE. The full length protein has 9 glycosylation sites, a signal peptide, propeptide and 2 isoforms produced by alternative splicing. The 120-kDa form of ADAM-17 is expressed more frequently and at higher levels in primary breast carcinomas compared with normal breast tissue (PMID:17438092). The excess mass at 29 kDa predicted for unglycosylated catalytic domain (PMID:17169570). This antibody is specific to ADAM17.

## Publications notables

Autrice	Pubmed ID	Journal	Application
Jonathan S. Kurche	36291184	Cells	IF
Wei Li	30569104	Int J Mol Med	WB, IHC

## Stockage

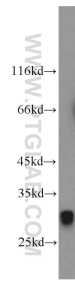
**Stockage:**  
Stocker à -20°C. Stable pendant un an après l'expédition.  
**Tampon de stockage:**  
PBS avec azoture de sodium à 0,02 % et glycérol à 50 % pH 7,3  
L'aliquotage n'est pas nécessaire pour le stockage à -20C

\*\*\* Les 20ul contiennent 0,1% de BSA.

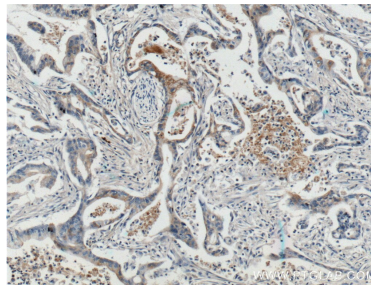
For technical support and original validation data for this product please contact:  
T: 1 (888) 4PTGLAB (1-888-478-4522) (toll free in USA), or 1(312) 455-8498 (outside USA)  
E: proteintech@ptglab.com  
W: ptglab.com

This product is exclusively available under Proteintech Group brand and is not available to purchase from any other manufacturer.

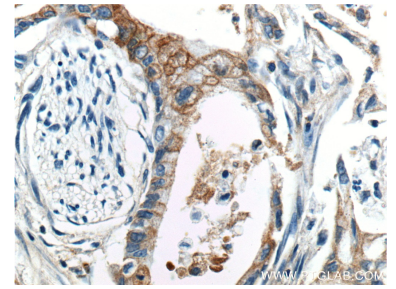
## Données de validation sélectionnées



human placenta tissue were subjected to SDS PAGE followed by western blot with 20259-1-AP (ADAM17-Specific antibody) at dilution of 1:500 incubated at room temperature for 1.5 hours.



Immunohistochemical analysis of paraffin-embedded human pancreas cancer tissue slide using 20259-1-AP (ADAM17-Specific Antibody) at dilution of 1:200 (under 10x lens).



Immunohistochemical analysis of paraffin-embedded human pancreas cancer tissue slide using 20259-1-AP (ADAM17-Specific Antibody) at dilution of 1:200 (under 40x lens).