

À des fins de recherche uniquement

Anticorps Polyclonal de lapin anti-LATS2-Specific



Numéro de catalogue: 20276-1-AP

Phare

27 Publications

Informations de base

Numéro de catalogue:

20276-1-AP

Taille:

150ul, Concentration: 400 µg/ml by Nanodrop;

Hôte:

Lapin

Isotype:

IgG

Numéro d'acquisition GenBank:

NM_014572

Identification du gène (NCBI):

26524

Nom complet:

LATS, large tumor suppressor, homolog 2 (Drosophila)

MW calculé

120 kDa

MW observés:

130-150 kDa

Méthode de purification:

Purification par affinité contre l'antigène

Dilutions recommandées:

WB 1:500-1:2000

IP 0.5-4.0 ug for IP and 1:200-1:1000 for WB

IHC 1:50-1:500

IF 1:20-1:200

Applications

Applications testées:

FC, IF, IHC, IP, WB, ELISA

Demandes citées:

CoIP, IF, IHC, IP, WB

Spécificité de l'espèce:

Humain, souris

Espèces citées:

Humain, souris

Contrôles positifs:

WB : cellules SGC-7901, tissu cardiaque humain, tissu cérébral de souris

IP : cellules HEK-293,

IHC : tissu de cancer du foie humain, tissu de côlon humain, tissu de muscle squelettique de souris

IF : cellules HepG2,

Remarque-IHC: il est suggéré de démasquer l'antigène avec un tampon de TE buffer pH 9,0; (*) À défaut, le démasquage de l'antigène peut être effectué avec un tampon citrate pH 6,0.

Informations générales

LATS2, also named as KPM, belongs to the protein kinase superfamily and AGC Ser/Thr protein kinase family. LATS2 is a tumor suppressor which plays a critical role in centrosome duplication, maintenance of mitotic fidelity and genomic stability. It negatively regulates G1/S transition by down-regulating cyclin E/CDK2 kinase activity. It is a negative regulator of the androgen receptor. LATS2 has a calculated molecular mass of 120 kDa and an apparent molecular mass of 150 kDa (PMID: 10871863). The antibody is specific to LATS2.

Publications notables

Autrice	Pubmed ID	Journal	Application
Xin Wang	34544426	J Transl Med	WB,IHC
Minqi Zhu	36118851	Front Genet	IHC
Yandong Zhang	31731517	Molecules	WB

Stockage

Stockage:

Stocker à -20°C. Stable pendant un an après l'expédition.

Tampon de stockage:

PBS avec azoture de sodium à 0,02 % et glycérol à 50 % pH 7,3

L'aliquotage n'est pas nécessaire pour le stockage à -20C

***** Les 20ul contiennent 0,1% de BSA.**

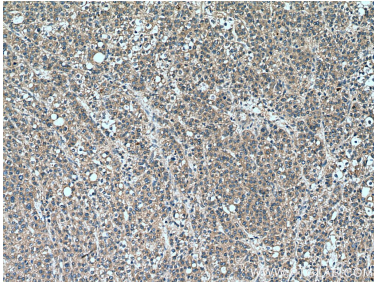
For technical support and original validation data for this product please contact:

T: 1 (888) 4PTGLAB (1-888-478-4522) (toll free in USA), or 1(312) 455-8498 (outside USA)

E: proteintech@ptglab.com
W: ptglab.com

This product is exclusively available under Proteintech Group brand and is not available to purchase from any other manufacturer.

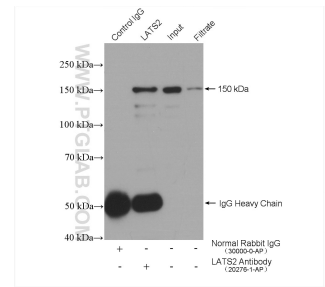
Données de validation sélectionnées



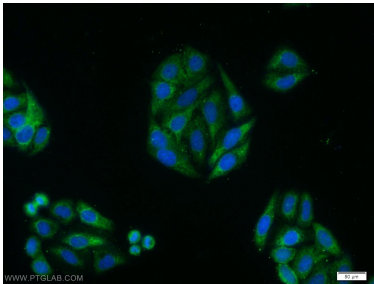
Immunohistochemical analysis of paraffin-embedded human liver cancer tissue slide using 20276-1-AP (LATS2-Specific antibody) at dilution of 1:200 (under 10x lens). Heat mediated antigen retrieval with Tris-EDTA buffer (pH 9.0).



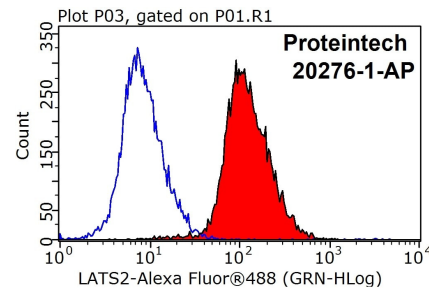
SGC-7901 cells were subjected to SDS PAGE followed by western blot with 20276-1-AP (LATS2-Specific antibody) at dilution of 1:500 incubated at room temperature for 1.5 hours.



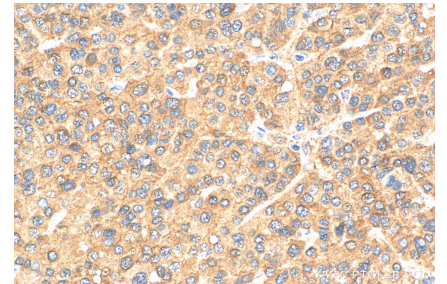
IP result of anti-LATS2-Specific (IP:20276-1-AP, 4ug; Detection:20276-1-AP 1:300) with HEK-293 cells lysate 2320 ug.



Immunofluorescent analysis of HepG2 cells using 20276-1-AP (LATS2-Specific antibody) at dilution of 1:50 and Alexa Fluor 488-conjugated AffiniPure Goat Anti-Rabbit IgG(H+L).



1x10⁶ HeLa cells were stained with 0.2ug LATS2-Specific antibody (20276-1-AP, red) and control antibody (blue). Fixed with 90% MeOH blocked with 3% BSA (30 min). Alexa Fluor 488-conjugated AffiniPure Goat Anti-Rabbit IgG(H+L) with dilution 1:1000.



Immunohistochemical analysis of paraffin-embedded human liver cancer tissue slide using 20276-1-AP (LATS2-Specific antibody) at dilution of 1:200 (under 40x lens). Heat mediated antigen retrieval with Tris-EDTA buffer (pH 9.0).