

À des fins de recherche uniquement

# Anticorps Polyclonal de lapin anti-RREB1-Specific



Numéro de catalogue: 20280-1-AP

Phare

1 Publications

## Informations de base

Numéro de catalogue:

20280-1-AP

Taille:

150ul, Concentration: 350 µg/ml by Nanodrop and 187 µg/ml by Bradford method using BSA as the standard;

Hôte:

Lapin

Isotype:

IgG

Numéro d'acquisition GenBank:

NM\_001003698

Identification du gène (NCBI):

6239

Nom complet:

ras responsive element binding protein 1

MW calculé

181 kDa

MW observés:

160-181 kDa, 250 kDa

Méthode de purification:

Purification par affinité contre l'antigène

Dilutions recommandées:

WB 1:500-1:1000

IHC 1:200-1:800

## Applications

Applications testées:

IHC, WB, ELISA

Demandes citées:

IHC, WB

Spécificité de l'espèce:

Humain

Espèces citées:

Humain

Contrôles positifs:

WB : cellules BxPC-3, cellules HeLa, cellules SH-SY5Y

IHC : tissu de carcinome urothélial humain, tissu de cancer du pancréas humain, tissu de cancer du sein humain

**Remarque-IHC: il est suggéré de démasquer l'antigène avec un tampon de TE buffer pH 9,0; (\*) À défaut, le démasquage de l'antigène peut être effectué avec un tampon citrate pH 6,0.**

## Informations générales

RREB1, also named as FINB and Zep-1, belongs to the krueppel C2H2-type zinc-finger protein family. RREB1 is a transcription factor that binds specifically to the RAS-responsive elements (RRE) of gene promoters. It may be involved in Ras/Raf-mediated cell differentiation by enhancing calcitonin expression. RREB1 represses the angiotensinogen gene. RREB1 can induce expression of p53 and repress p16 which associated with the expression of tumour. It has been reported that the RREB1 can be a candidate gene for type 2 diabetes associated end-stage kidney disease. To some extent, the decrease of zinc in human pancreatic adenocarcinoma is associated with the downregulation of RREB1. RREB1 has some isoforms with 250 kDa, 180-200 kDa and 140-160 kDa protein. (PMID: 21703425, 15067362, 25050557, 25027322)

## Publications notables

Autrice	Pubmed ID	Journal	Application
Qi Gao	34666611	Cell Cycle	WB,IHC

## Stockage

Stockage:

Stocker à -20°C. Stable pendant un an après l'expédition.

Tampon de stockage:

PBS avec azoture de sodium à 0,02 % et glycérol à 50 % pH 7,3

L'aliquotage n'est pas nécessaire pour le stockage à -20C

\*\*\* Les 20ul contiennent 0,1% de BSA.

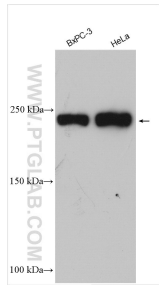
For technical support and original validation data for this product please contact:

T: 1 (888) 4PTGLAB (1-888-478-4522) (toll free in USA), or 1(312) 455-8498 (outside USA)

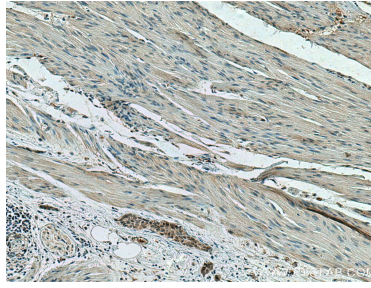
E: proteintech@ptglab.com  
W: ptglab.com

This product is exclusively available under Proteintech Group brand and is not available to purchase from any other manufacturer.

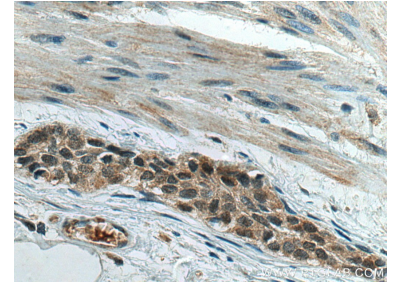
## Données de validation sélectionnées



Various lysates were subjected to SDS PAGE followed by western blot with 20280-1-AP (RREB1-Specific antibody) at dilution of 1:500 incubated at room temperature for 1.5 hours.



Immunohistochemical analysis of paraffin-embedded human urothelial carcinoma tissue slide using 20280-1-AP (RREB1-Specific antibody) at dilution of 1:400 (under 10x lens). Heat mediated antigen retrieval with Tris-EDTA buffer (pH 9.0).



Immunohistochemical analysis of paraffin-embedded human urothelial carcinoma tissue slide using 20280-1-AP (RREB1-Specific antibody) at dilution of 1:400 (under 40x lens). Heat mediated antigen retrieval with Tris-EDTA buffer (pH 9.0).