

À des fins de recherche uniquement

Anticorps Polyclonal de lapin anti-SLC13A4



Numéro de catalogue: 20302-1-AP

2 Publications

Informations de base

Numéro de catalogue: 20302-1-AP	Numéro d'acquisition GenBank: BC030689	Méthode de purification: Purification par affinité contre l'antigène
Taille: 150ul , Concentration: 133 µg/ml by Nanodrop and 133 µg/ml by Bradford method using BSA as the standard;	Identification du gène (NCBI): 26266	Dilutions recommandées: WB 1:500-1:1000 IF 1:20-1:200
Hôte: Lapin	Nom complet: solute carrier family 13 (sodium/sulfate symporters), member 4	
Isotype: IgG	MW calculé 626 aa, 69 kDa	
Immunogen Catalog Number: AG14116	MW observés: 69 kDa	

Applications

Applications testées: IF, WB, ELISA	Contrôles positifs: WB : cellules HEK-293, IF : cellules HEK-293,
Demandes citées: IHC, WB	
Spécificité de l'espèce: Humain, rat, souris	
Espèces citées: souris	

Informations générales

SLC13A4 (also known as SUT-1 or NaS2) belongs to the family of Na⁺-coupled anion transporters and mediates sulfate reabsorption in the high endothelial venules (HEV). Sulfate is an obligate nutrient for fetal development. Highly expressed in placenta, SLC13A4 has been proposed to play important physiological roles in maintaining high maternal serum sulfate levels during pregnancy and mediating sulfate supply to the fetus.

Publications notables

Autrice	Pubmed ID	Journal	Application
Zhe Zhang	30956169	EBioMedicine	IHC
Dawson Paul A PA	22674389	Biol Reprod	WB, IHC

Stockage

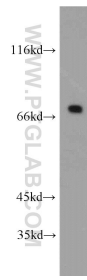
Stockage:
Stocker à -20°C. Stable pendant un an après l'expédition.
Tampon de stockage:
PBS avec azoture de sodium à 0,02 % et glycérol à 50 % pH 7,3
L'aliquotage n'est pas nécessaire pour le stockage à -20C

*** Les 20ul contiennent 0,1% de BSA.

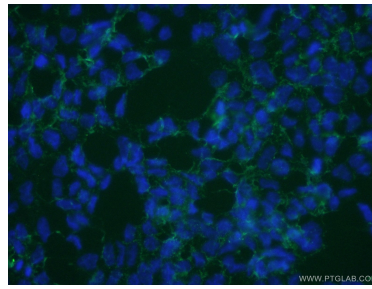
For technical support and original validation data for this product please contact:
T: 1 (888) 4PTGLAB (1-888-478-4522) (toll free in USA), or 1(312) 455-8498 (outside USA)
E: proteintech@ptglab.com
W: ptglab.com

This product is exclusively available under Proteintech Group brand and is not available to purchase from any other manufacturer.

Données de validation sélectionnées



HEK-293 cells were subjected to SDS PAGE followed by western blot with 20302-1-AP (SLC13A4 antibody) at dilution of 1:500 incubated at room temperature for 1.5 hours.



Immunofluorescent analysis of (10% Formaldehyde) fixed HEK-293 cells using 20302-1-AP (SLC13A4 antibody) at dilution of 1:50 and Alexa Fluor 488-conjugated AffiniPure Goat Anti-Rabbit IgG(H+L).