

À des fins de recherche uniquement

Anticorps Polyclonal de lapin anti-DRD5



Numéro de catalogue: 20310-1-AP

Phare

11 Publications

Informations de base

Numéro de catalogue:

20310-1-AP

Taille:

150ul , Concentration: 200 µg/ml by Nanodrop and 153 µg/ml by Bradford method using BSA as the standard;

Hôte:

Lapin

Isotype:

IgG

Immunogen Catalog Number:

AG14145

Numéro d'acquisition GenBank:

BC009748

Identification du gène (NCBI):

1816

Nom complet:

dopamine receptor D5

MW calculé

477 aa, 53 kDa

MW observés:

50-53 kDa

Méthode de purification:

Purification par affinité contre l'antigène

Dilutions recommandées:

WB 1:500-1:3000

IHC 1:50-1:500

Applications

Applications testées:

FC, IHC, WB, ELISA

Demandes citées:

IF, IHC, WB

Spécificité de l'espèce:

Humain, rat, souris

Espèces citées:

Humain, rat, souris

Remarque-IHC: il est suggéré de démasquer l'antigène avec un tampon de TE buffer pH 9,0; (*) A défaut, 'le démasquage de l'antigène peut être 'effectué avec un tampon citrate pH 6,0.

Contrôles positifs:

WB : tissu cérébral de souris, tissu cérébral de rat

IHC : tissu cérébral de souris,

Informations générales

DRD5, is a G-protein coupled receptor and involved in diversified physiological and pathological processes. this receptor stimulates adenylyl cyclase activity and is expressed in the limbic area of the mammalian brain(PMID:14699430). Studies have shown that DRD5 is highly expressed in colonic macrophages and DRD5 deficiency exacerbates DSS(dextran sodium sulfate)-induced colitis(PMID:34001860). in addition, DRD5 agonists were potent inhibitors of pituitary tumor growth(PMID:28613975).

Publications notables

Autrice	Pubmed ID	Journal	Application
Gongliang Zhang	31491076	ACS Chem Neurosci	WB
Magdalena Kurnik-Lucka	34884737	Int J Mol Sci	IHC
Lu Liu	34001860	Cell Death Dis	WB

Stockage

Stockage:

Stocker à -20°C. Stable pendant un an après l'expédition.

Tampon de stockage:

PBS avec azoture de sodium à 0,02 % et glycérol à 50 % pH 7,3

L'aliquotage n'est pas nécessaire pour le stockage à -20C

*** Les 20ul contiennent 0,1% de BSA.

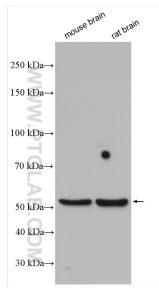
For technical support and original validation data for this product please contact:

T: 1 (888) 4PTGLAB (1-888-478-4522) (toll free in USA), or 1(312) 455-8498 (outside USA)

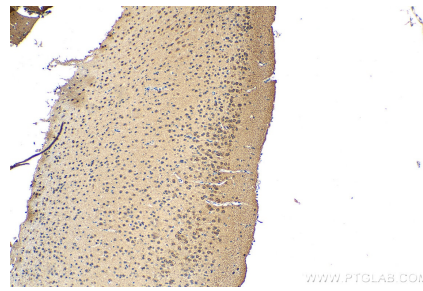
E: proteintech@ptglab.com
W: ptglab.com

This product is exclusively available under Proteintech Group brand and is not available to purchase from any other manufacturer.

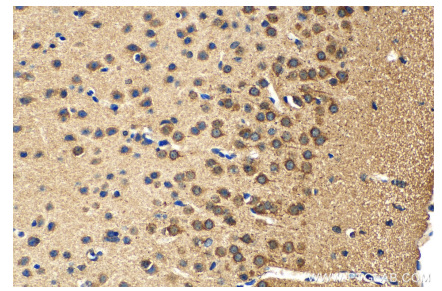
Données de validation sélectionnées



Various lysates were subjected to SDS PAGE followed by western blot with 20310-1-AP (DRD5 antibody) at dilution of 1:1500 incubated at room temperature for 1.5 hours.



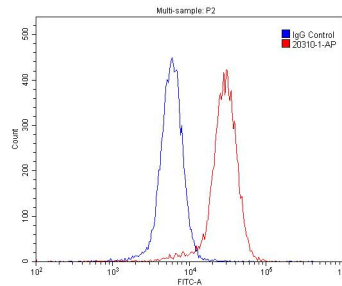
Immunohistochemical analysis of paraffin-embedded mouse brain tissue slide using 20310-1-AP (DRD5 antibody) at dilution of 1:200 (under 10x lens). Heat mediated antigen retrieval with Tris-EDTA buffer (pH 9.0).



Immunohistochemical analysis of paraffin-embedded mouse brain tissue slide using 20310-1-AP (DRD5 antibody) at dilution of 1:200 (under 40x lens). Heat mediated antigen retrieval with Tris-EDTA buffer (pH 9.0).



mouse brain tissue were subjected to SDS PAGE followed by western blot with 20310-1-AP (DRD5 antibody) at dilution of 1:500 incubated at room temperature for 1.5 hours.



1×10^6 SH-SY5Y cells were stained with 0.2ug DRD5 antibody (20310-1-AP, red) and control antibody (blue). Fixed with 4% PFA blocked with 3% BSA (30 min). Alexa Fluor 488-conjugated AffiniPure Goat Anti-Rabbit IgG(H+L) with dilution 1:1500.