

À des fins de recherche uniquement

Anticorps Polyclonal de lapin anti-APJ



Numéro de catalogue: 20341-1-AP

Phare

27 Publications

Informations de base

Numéro de catalogue:

20341-1-AP

Taille:

150ul, Concentration: 900 µg/ml by Nanodrop;

Hôte:

Lapin

Isotype:

IgG

Immunogen Catalog Number:

AG14138

Numéro d'acquisition GenBank:

BC032688

Identification du gène (NCBI):

187

Nom complet:

apelin receptor

MW calculé

380 aa, 43 kDa

MW observés:

43 kDa

Méthode de purification:

Purification par affinité contre l'antigène

Dilutions recommandées:

WB 1:500-1:1000

Applications

Applications testées:

FC, WB, ELISA

Demandes citées:

FC, IF, IHC, WB

Spécificité de l'espèce:

Humain, souris

Espèces citées:

Humain, rat, souris

Contrôles positifs:

WB : cellules SH-SY5Y,

Informations générales

APJ, also named as APLNR and AGTRL1, belongs to the G-protein coupled receptor 1 family. It is a receptor for apelin coupled to G proteins that inhibit adenylate cyclase activity. APJ is an alternative coreceptor with CD4 for HIV-1 infection. It may be involved in the development of AIDS dementia. APJ is expressed abundantly in the corpus callosum and spinal cord.

Publications notables

Autrice	Pubmed ID	Journal	Application
Yong Chen	36224027	Front Biosci (Landmark Ed)	WB
Qianyi Chen	36243122	J Invest Dermatol	IF, IHC, WB
Ke Song	36443325	Nat Commun	WB

Stockage

Stockage:

Stocker à -20°C. Stable pendant un an après l'expédition.

Tampon de stockage:

PBS avec azoture de sodium à 0,02 % et glycérol à 50 % pH 7,3

L'aliquotage n'est pas nécessaire pour le stockage à -20C

*** Les 20ul contiennent 0,1% de BSA.

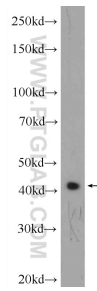
For technical support and original validation data for this product please contact:

T: 1 (888) 4PTGLAB (1-888-478-4522) (toll free in USA), or 1(312) 455-8498 (outside USA)

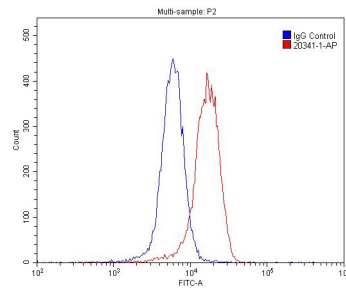
E: proteintech@ptglab.com
W: ptglab.com

This product is exclusively available under Proteintech Group brand and is not available to purchase from any other manufacturer.

Données de validation sélectionnées



SH-SY5Y cells were subjected to SDS PAGE followed by western blot with 20341-1-AP (APJ) antibody at dilution of 1:600 incubated at room temperature for 1.5 hours.



1×10^6 SH-SY5Y cells were stained with 0.2ug APJ antibody (20341-1-AP, red) and control antibody (blue). Fixed with 4% PFA blocked with 3% BSA (30 min). Alexa Fluor 488-conjugated AffiniPure Goat Anti-Rabbit IgG(H+L) with dilution 1:1500.