

À des fins de recherche uniquement

Anticorps Polyclonal de lapin anti-LASS2



Numéro de catalogue: 20344-1-AP

Phare

5 Publications

Informations de base

Numéro de catalogue:

20344-1-AP

Taille:

150ul, Concentration: 500 µg/ml by Nanodrop;

Hôte:

Lapin

Isotype:

IgG

Immunogen Catalog Number:

AG14151

Numéro d'acquisition GenBank:

BC010032

Identification du gène (NCBI):

29956

Nom complet:

LAG1 homolog, ceramide synthase 2

MW calculé

380 aa, 45 kDa

MW observés:

45 kDa

Méthode de purification:

Purification par affinité contre l'antigène

Dilutions recommandées:

WB 1:1000-1:4000

IP 0.5-4.0 µg for IP and 1:500-1:1000 for WB

IHC 1:50-1:500

Applications

Applications testées:

IHC, IP, WB, ELISA

Demandes citées:

IF, IHC, WB

Spécificité de l'espèce:

Humain, rat, souris

Espèces citées:

Humain, souris

Contrôles positifs:

WB : tissu hépatique de souris, cellules HeLa, cellules HepG2, tissu hépatique de rat

IP : cellules HeLa,

IHC : tissu hépatique humain, tissu pulmonaire de souris

Remarque-IHC: il est suggéré de démasquer l'antigène avec un tampon de TE buffer pH 9,0; (*) À défaut, le démasquage de l'antigène peut être effectué avec un tampon citrate pH 6,0.

Informations générales

LASS2, also known as TMSG1, is a novel suppressor of human cancer metastasis. As one member of LASS family, including LASS1-6, LASS2 mRNA is at the highest level of all LASS members, and has the broadest tissue distribution, particularly abundant in the liver, kidney and brain in mice. The biological roles of LASS2 include protection from aging, hepatic INS resistance, and hepatocellular carcinoma (HCC) progression. LASS2 has been correlated with the degree of invasion and recurrence of carcinomas of the prostate, liver, breast and bladder.

Publications notables

Autrice	Pubmed ID	Journal	Application
Ting Luan	30463687	Exp Cell Res	WB
Linda Sasset	35815623	Cardiovasc Res	WB
Haifeng Wang	26150338	Tumour Biol	WB

Stockage

Stockage:

Stocker à -20°C. Stable pendant un an après l'expédition.

Tampon de stockage:

PBS avec azoture de sodium à 0,02 % et glycérol à 50 % pH 7,3

L'aliquotage n'est pas nécessaire pour le stockage à -20C

***** Les 20ul contiennent 0,1% de BSA.**

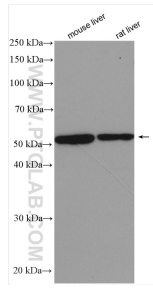
For technical support and original validation data for this product please contact:

T: 1 (888) 4PTGLAB (1-888-478-4522) (toll free in USA), or 1(312) 455-8498 (outside USA)

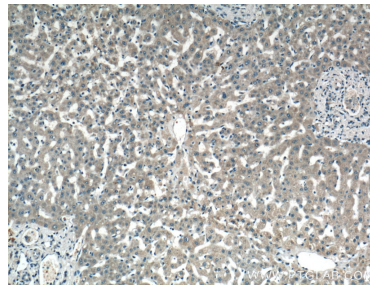
E: proteintech@ptglab.com
W: ptglab.com

This product is exclusively available under Proteintech Group brand and is not available to purchase from any other manufacturer.

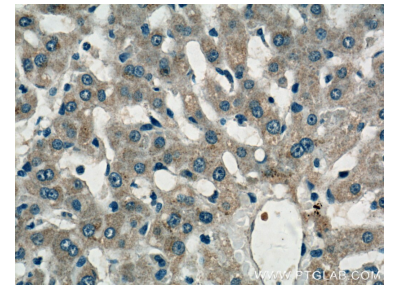
Données de validation sélectionnées



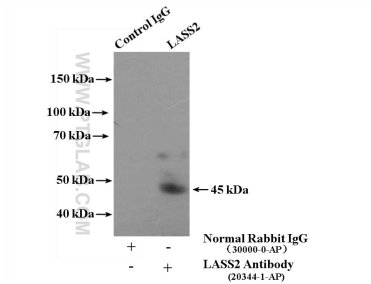
Various lysates were subjected to SDS PAGE followed by western blot with 20344-1-AP (LASS2 antibody) at dilution of 1:2000 incubated at room temperature for 1.5 hours.



Immunohistochemical analysis of paraffin-embedded human liver tissue slide using 20344-1-AP (LASS2 Antibody) at dilution of 1:200 (under 10x lens).



Immunohistochemical analysis of paraffin-embedded human liver tissue slide using 20344-1-AP (LASS2 Antibody) at dilution of 1:200 (under 40x lens).



IP Result of anti-LASS2 (IP:20344-1-AP, 4ug; Detection:20344-1-AP 1:500) with HeLa cells lysate 3200ug.