

À des fins de recherche uniquement

Anticorps Polyclonal de lapin anti-ASCT2



Numéro de catalogue: 20350-1-AP

Phare

13 Publications

Informations de base

Numéro de catalogue: 20350-1-AP	Numéro d'acquisition GenBank: BC000062	Méthode de purification: Purification par affinité contre l'antigène
Taille: 150ul , Concentration: 500 µg/ml by Nanodrop;	Identification du gène (NCBI): 6510	Dilutions recommandées: WB 1:2000-1:16000 IHC 1:400-1:1600 IF 1:50-1:500
Hôte: Lapin	Nom complet: solute carrier family 1 (neutral amino acid transporter), member 5	
Isotype: IgG	MW calculé 541 aa, 57 kDa	
Immunogen Catalog Number: AG14182	MW observés: 55-70 kDa	

Applications

Applications testées:
FC, IF, IHC, WB, ELISA

Demandes citées:
IF, IHC, WB

Spécificité de l'espèce:
Humain, souris

Espèces citées:
Humain, souris

Contrôles positifs:

WB : cellules HeLa,

IHC : tissu de cancer du côlon humain, tissu de cancer de l'estomac humain

IF : tissu d'intestin grêle de souris,

Remarque-IHC: il est suggéré de démasquer l'antigène avec un tampon de TE buffer pH 9,0; (*) À défaut, le démasquage de l'antigène peut être effectué avec un tampon citrate pH 6,0.

Informations générales

Publications notables

Autrice	Pubmed ID	Journal	Application
Jun Inoue	33294587	Mol Ther Oncolytics	WB
Yan Hu	34726238	Biosci Rep	WB
Di Ye	34006301	J Exp Clin Cancer Res	WB

Stockage

Stockage:

Stocker à -20°C. Stable pendant un an après l'expédition.

Tampon de stockage:

PBS avec azoture de sodium à 0,02 % et glycérol à 50 % pH 7,3

L'aliquotage n'est pas nécessaire pour le stockage à -20C

*** Les 20ul contiennent 0,1% de BSA.

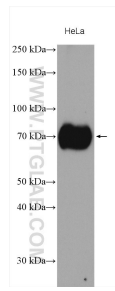
For technical support and original validation data for this product please contact:

T: 1 (888) 4PTGLAB (1-888-478-4522) (toll free in USA), or 1(312) 455-8498 (outside USA)

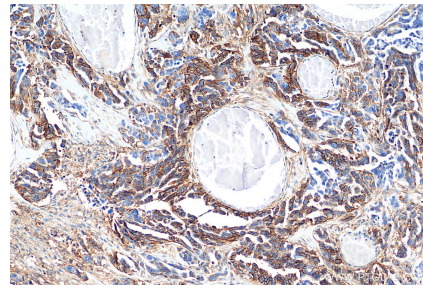
E: proteintech@ptglab.com
W: ptglab.com

This product is exclusively available under Proteintech Group brand and is not available to purchase from any other manufacturer.

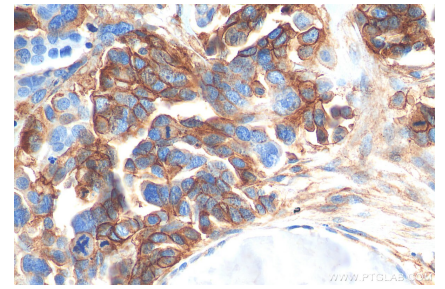
Données de validation sélectionnées



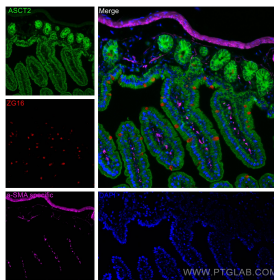
HeLa cells were subjected to SDS PAGE followed by western blot with 20350-1-AP (ASCT2 antibody) at dilution of 1:8000 incubated at room temperature for 1.5 hours.



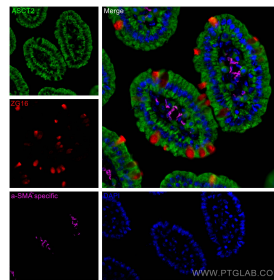
Immunohistochemical analysis of paraffin-embedded human colon cancer tissue slide using 20350-1-AP (ASCT2 antibody) at dilution of 1:800 (under 10x lens). Heat mediated antigen retrieval with Tris-EDTA buffer (pH 9.0).



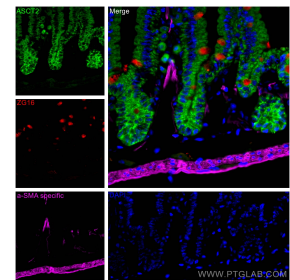
Immunohistochemical analysis of paraffin-embedded human colon cancer tissue slide using 20350-1-AP (ASCT2 antibody) at dilution of 1:800 (under 40x lens). Heat mediated antigen retrieval with Tris-EDTA buffer (pH 9.0).



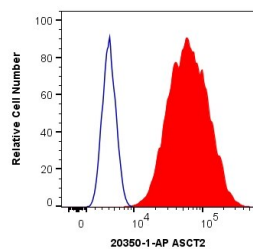
Immunofluorescent analysis of (4% PFA) fixed mouse small intestine tissue using ASCT2 antibody (20350-1-AP) at dilution of 1:200 and CoraLite@488-Conjugated AffiniPure Goat Anti-Rabbit IgG(H+L), ZG16 antibody (67389-1-Ig, Clone: 1A7B9, red), CoraLite@594 smooth muscle actin specific antibody (CL594-80008, Clone: 5H7, Magenta).



Immunofluorescent analysis of (4% PFA) fixed mouse small intestine tissue using ASCT2 antibody (20350-1-AP) at dilution of 1:200 and CoraLite@488-Conjugated AffiniPure Goat Anti-Rabbit IgG(H+L), ZG16 antibody (67389-1-Ig, Clone: 1A7B9, red), CoraLite@594 smooth muscle actin specific antibody (CL594-80008, Clone: 5H7, Magenta).



Immunofluorescent analysis of (4% PFA) fixed mouse small intestine tissue using ASCT2 antibody (20350-1-AP) at dilution of 1:200 and CoraLite@488-Conjugated AffiniPure Goat Anti-Rabbit IgG(H+L), ZG16 antibody (67389-1-Ig, Clone: 1A7B9, red), CoraLite@594 smooth muscle actin specific antibody (CL594-80008, Clone: 5H7, Magenta).



1×10^6 HeLa cells were intracellularly stained with 0.4 ug Anti-Human ASCT2 (20350-1-AP) and CoraLite@488-Conjugated AffiniPure Goat Anti-Rabbit IgG(H+L) at dilution 1:1000 (red), or 0.4 ug Isotype Control. Cells were fixed with 4% PFA and permeabilized with Flow Cytometry Perm Buffer (PF00011-C).