

À des fins de recherche uniquement

# Anticorps Polyclonal de lapin anti-PER2



Numéro de catalogue: 20359-1-AP

16 Publications

## Informations de base

Numéro de catalogue:  
20359-1-AP

Taille:  
150ul, Concentration: 367 µg/ml by  
Bradford method using BSA as the  
standard;

Hôte:  
Lapin

Isotype:  
IgG

Numéro d'acquisition GenBank:  
NM\_022817

Identification du gène (NCBI):  
8864

Nom complet:  
period homolog 2 (Drosophila)

MW calculé  
137 kDa

MW observés:  
136 kDa

Méthode de purification:  
Purification par affinité contre  
l'antigène

Dilutions recommandées:  
WB 1:500-1:1000  
IP 0.5-4.0 ug for IP and 1:200-1:1000  
for WB

## Applications

Applications testées:  
IP, WB, ELISA

Demandes citées:  
IF, IHC, IP, WB

Spécificité de l'espèce:  
Humain

Espèces citées:  
Chèvre, Humain, souris

Contrôles positifs:

WB : cellules BxPC-3, cellules K-562, cellules LO2,  
cellules Y79

IP : cellules HEK-293,

## Informations générales

PER2, also named as KIAA0347, is a component of the circadian clock mechanism which is essential for generating circadian rhythms. PER2 is a negative element in the circadian transcriptional loop. PER2 influences clock function by interacting with other circadian regulatory proteins and transporting them to the nucleus. It negatively regulates CLOCK|NPAS2-BMAL1|BMAL2-induced transactivation. Defects in PER2 are a cause of familial advanced sleep-phase syndrome (FASPS) which is characterized by very early sleep onset and offset. The antibody is specific to PER2. It can recognize isoform1 and isoform2 of PER2.

## Publications notables

Autrice	Pubmed ID	Journal	Application
Jian Gao	33010914	J Dairy Sci	WB, IF
Zandra E Walton	29861175	Cell	WB
An-yuan Cheng	25560491	Tumour Biol	WB

## Stockage

Stockage:

Stocker à -20°C. Stable pendant un an après l'expédition.

Tampon de stockage:

PBS avec azoture de sodium à 0,02 % et glycérol à 50 % pH 7,3

L'aliquotage n'est pas nécessaire pour le stockage à -20C

\*\*\* Les 20ul contiennent 0,1% de BSA.

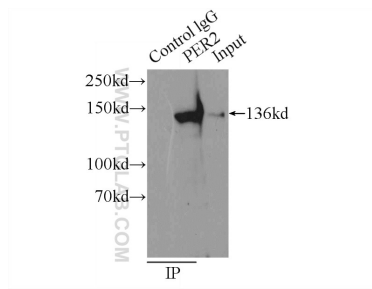
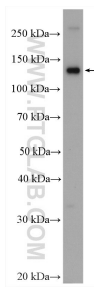
For technical support and original validation data for this product please contact:

T: 1 (888) 4PTGLAB (1-888-478-4522) (toll free  
in USA), or 1(312) 455-8498 (outside USA)

E: [proteintech@ptglab.com](mailto:proteintech@ptglab.com)  
W: [ptglab.com](http://ptglab.com)

This product is exclusively available under Proteintech Group brand and is not available to purchase from any other manufacturer.

## Données de validation sélectionnées



BxPC-3 cells were subjected to SDS PAGE followed by western blot with 20359-1-AP (PER2 antibody) at dilution of 1:600 incubated at room temperature for 1.5 hours.

IP Result of anti-PER2 (IP:20359-1-AP, 3ug; Detection:20359-1-AP 1:300) with HEK-293 cells lysate 1000ug.