

À des fins de recherche uniquement

# Anticorps Polyclonal de lapin anti-RBAP48



Numéro de catalogue: 20364-1-AP

Phare

11 Publications

## Informations de base

Numéro de catalogue:

20364-1-AP

Taille:

150ul, Concentration: 700 µg/ml by Nanodrop;

Hôte:

Lapin

Isotype:

IgG

Numéro d'acquisition GenBank:

NM\_005610

Identification du gène (NCBI):

5928

Nom complet:

retinoblastoma binding protein 4

MW calculé

48 kDa

MW observés:

48-50 kDa

Méthode de purification:

Purification par affinité contre l'antigène

Dilutions recommandées:

WB 1:1000-1:6000

IP 0.5-4.0 µg for IP and 1:500-1:2000 for WB

IHC 1:1000-1:4000

IF 1:50-1:500

## Applications

Applications testées:

IF, IHC, IP, WB, ELISA

Demandes citées:

IHC, IP, WB

Spécificité de l'espèce:

Humain, souris

Espèces citées:

Humain, souris

**Remarque-IHC: il est suggéré de démasquer l'antigène avec un tampon de TE buffer pH 9.0; (\*) À défaut, le démasquage de l'antigène peut être effectué avec un tampon citrate pH 6,0.**

Contrôles positifs:

WB : cellules A431, cellules HEK-293, cellules HeLa, cellules HepG2, cellules Jurkat, cellules K-562, cellules L02, cellules SH-SY5Y, tissu cérébral de souris, tissu cérébral humain

IP : cellules HeLa,

IHC : tissu de cancer du col de l'utérus humain, tissu de cancer du sein humain

IF : cellules HeLa,

## Informations générales

RBBP4, also named as RBAP48 and CAF-I p48, belongs to the WD repeat RBAP46/RBAP48/MSI1 family. RBBP4 is a core histone-binding subunit that may target chromatin assembly factors, chromatin remodeling factors and histone deacetylases to their histone substrates in a manner that is regulated by nucleosomal DNA. It is a component of several complexes which regulate chromatin metabolism. The antibody is specific to RBBP4.

## Publications notables

Autrice	Pubmed ID	Journal	Application
Pingping Zhu	30224759	Nat Cell Biol	WB
Pingping Zhu	26426078	J Clin Invest	WB, IHC
Orhi Barroso-Gomila	34795231	Nat Commun	WB

## Stockage

Stockage:

Stocker à -20°C. Stable pendant un an après l'expédition.

Tampon de stockage:

PBS avec azoture de sodium à 0,02 % et glycérol à 50 % pH 7,3

L'aliquotage n'est pas nécessaire pour le stockage à -20C

\*\*\* Les 20ul contiennent 0,1% de BSA.

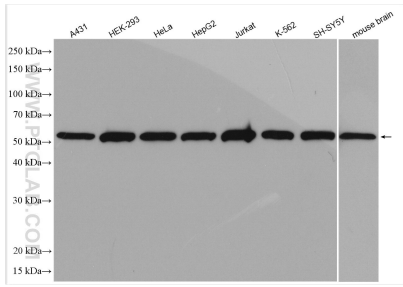
For technical support and original validation data for this product please contact:

T: 1 (888) 4PTGLAB (1-888-478-4522) (toll free in USA), or 1(312) 455-8498 (outside USA)

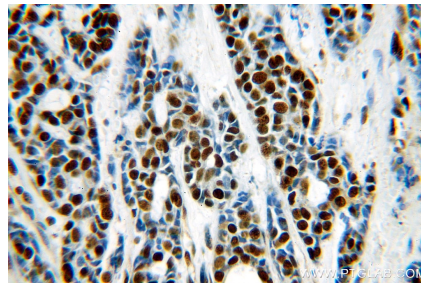
E: proteintech@ptglab.com  
W: ptglab.com

This product is exclusively available under Proteintech Group brand and is not available to purchase from any other manufacturer.

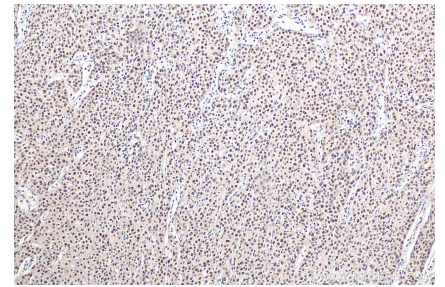
## Données de validation sélectionnées



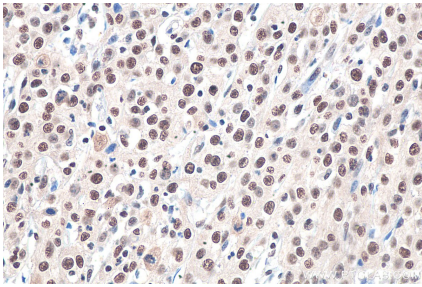
Various lysates were subjected to SDS PAGE followed by western blot with 20364-1-AP (RBAP48 antibody) at dilution of 1:3000 incubated at room temperature for 1.5 hours.



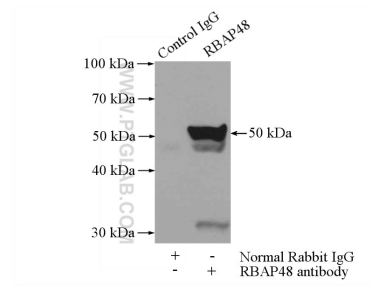
Immunohistochemical analysis of paraffin-embedded human cervical cancer using 20364-1-AP (RBAP48 antibody) at dilution of 1:100 (under 40x lens).



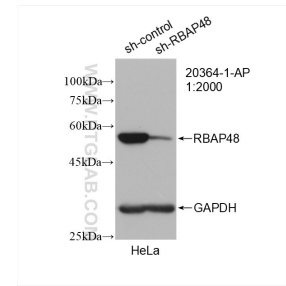
Immunohistochemical analysis of paraffin-embedded human cervical cancer tissue slide using 20364-1-AP (RBAP48 antibody) at dilution of 1:2000 (under 10x lens). Heat mediated antigen retrieval with Tris-EDTA buffer (pH 9.0).



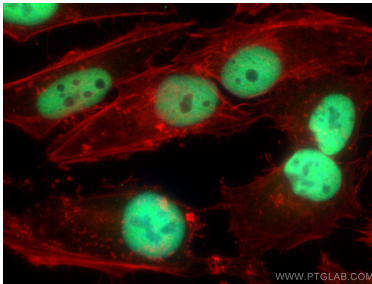
Immunohistochemical analysis of paraffin-embedded human cervical cancer tissue slide using 20364-1-AP (RBAP48 antibody) at dilution of 1:2000 (under 40x lens). Heat mediated antigen retrieval with Tris-EDTA buffer (pH 9.0).



IP Result of anti-RBAP48 (IP:20364-1-AP, 4ug; Detection:20364-1-AP 1:1000) with HeLa cells lysate 2000ug.



WB result of RBAP48 antibody (20364-1-AP; 1:2000; incubated at room temperature for 1.5 hours) with sh-Control and sh-RBAP48 transfected HeLa cells.



Immunofluorescent analysis of (4% PFA) fixed HeLa cells using RBAP48 antibody (20364-1-AP) at dilution of 1:200 and CoraLite® 488-Conjugated AffiniPure Goat Anti-Rabbit IgG(H+L), CL594-Phalloidin (red).