

À des fins de recherche uniquement

# Anticorps Polyclonal de lapin anti-SUZ12



Numéro de catalogue: 20366-1-AP

Phare

10 Publications

## Informations de base

Numéro de catalogue:  
20366-1-AP

Taille:  
150ul, Concentration: 260 µg/ml by  
Bradford method using BSA as the  
standard;

Hôte:  
Lapin

Isotype:  
IgG

Numéro d'acquisition GenBank:  
NM\_015355

Identification du gène (NCBI):  
23512

Nom complet:  
suppressor of zeste 12 homolog  
(Drosophila)

MW calculé:  
83 kDa

MW observés:  
80-90 kDa

Méthode de purification:  
Purification par affinité contre  
l'antigène

Dilutions recommandées:  
WB 1:1000-1:6000  
IP 0.5-4.0 µg for IP and 1:500-1:1000  
for WB  
IHC 1:200-1:800

## Applications

Applications testées:  
IHC, IP, WB, ELISA

Demandes citées:  
IHC, IP, WB

Spécificité de l'espèce:  
Humain, rat

Espèces citées:  
Humain

Contrôles positifs:

WB : cellules HEK-293, cellules HeLa, cellules HepG2,  
cellules MCF-7

IP : cellules HeLa,

IHC : tissu de cancer du sein humain,

**Remarque-IHC: il est suggéré de démasquer l'antigène avec un tampon de TE buffer pH 9,0; (\*) À défaut, le démasquage de l'antigène peut être effectué avec un tampon citrate pH 6,0.**

## Informations générales

SUZ12, also termed CHET9, JAZ1 or KIAA0160, belongs to the VEF5 (VRN2-EMF2-FIS2-SU(Z)12) family. It is a polycomb group (PcG) protein. SUZ12 is a component of the PRC2/EED-EZH2 complex, which methylates 'Lys-9' and 'Lys-27' of histone H3, leading to transcriptional repression of the affected target gene. The PRC2/EED-EZH2 complex may also serve as a recruiting platform for DNA methyltransferases, thereby linking two epigenetic repression systems. Genes repressed by the PRC2/EED-EZH2 complex include HOXC8, HOXA9, MYT1 and CDKN2A. A chromosomal aberration involving SUZ12 may be a cause of endometrial stromal tumors.

## Publications notables

Autrice	Pubmed ID	Journal	Application
Masamitsu N Asaka	27646999	Sci Rep	WB
Zhongwei Li	34775498	Cell Death Dis	WB,IP
Cheng Wang	35623249	Eur J Med Chem	WB

## Stockage

Stockage:

Stocker à -20°C. Stable pendant un an après l'expédition.

Tampon de stockage:

PBS avec azoture de sodium à 0,02 % et glycérol à 50 % pH 7,3

L'aliquotage n'est pas nécessaire pour le stockage à -20C

\*\*\* Les 20ul contiennent 0,1% de BSA.

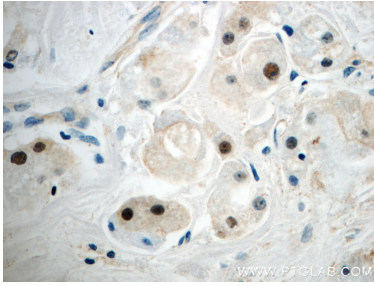
For technical support and original validation data for this product please contact:

T: 1 (888) 4PTGLAB (1-888-478-4522) (toll free  
in USA), or 1(312) 455-8498 (outside USA)

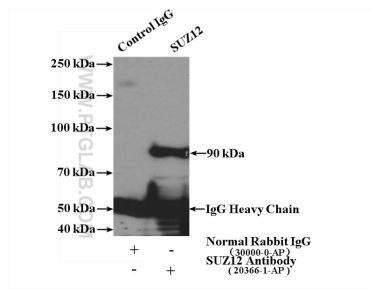
E: proteintech@ptglab.com  
W: ptglab.com

This product is exclusively available under Proteintech Group brand and is not available to purchase from any other manufacturer.

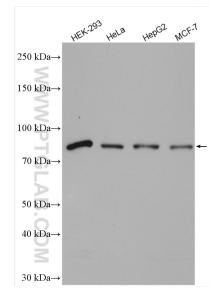
## Données de validation sélectionnées



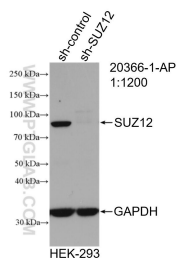
Immunohistochemical analysis of paraffin-embedded human breast cancer slide using 20366-1-AP (SUZ12 Antibody) at dilution of 1:400.



IP Result of anti-SUZ12 (IP:20366-1-AP, 4ug; Detection:20366-1-AP 1:500) with HeLa cells lysate 3200ug.



Various lysates were subjected to SDS PAGE followed by western blot with 20366-1-AP (SUZ12 antibody) at dilution of 1:3000 incubated at room temperature for 1.5 hours.



WB result of SUZ12 antibody (20366-1-AP; 1:1200; incubated at room temperature for 1.5 hours) with sh-Control and sh-SUZ12 transfected HEK-293 cells.