

À des fins de recherche uniquement

Anticorps Polyclonal de lapin anti-POLR2B-Specific



Numéro de catalogue: 20370-1-AP

2 Publications

Informations de base

Numéro de catalogue:
20370-1-AP

Taille:
150ul, Concentration: 400 µg/ml by Nanodrop and 213 µg/ml by Bradford method using BSA as the standard;

Hôte:
Lapin

Isotype:
IgG

Numéro d'acquisition GenBank:
NM_000938

Identification du gène (NCBI):
5431

Nom complet:
polymerase (RNA) II (DNA directed) polypeptide B, 140kDa

MW calculé:
134 kDa

MW observés:
140 kDa

Méthode de purification:
Purification par affinité contre l'antigène

Dilutions recommandées:
WB 1:500-1:2000
IP 0.5-4.0 ug for IP and 1:200-1:1000 for WB
IHC 1:20-1:200

Applications

Applications testées:
IHC, IP, WB, ELISA

Demandes citées:
ChIP, WB

Spécificité de l'espèce:
Humain, rat, souris

Espèces citées:
Humain

Contrôles positifs:

WB : cellules A431, cellules HeLa

IP : cellules HeLa,

IHC : tissu cérébral humain,

Remarque-IHC: il est suggéré de démasquer l'antigène avec un tampon de TE buffer pH 9,0; (*) À défaut, le démasquage de l'antigène peut être effectué avec un tampon citrate pH 6,0.

Informations générales

POLR2B belongs to the RNA polymerase beta chain family. It is a DNA-dependent RNA polymerase which catalyzes the transcription of DNA into RNA using the four ribonucleoside triphosphates as substrates. It is the second largest component of RNA polymerase II which synthesizes mRNA precursors and many functional non-coding RNAs. POLR2B proposed to contribute to the polymerase catalytic activity and forms the polymerase active center together with the largest subunit. Pol II is the central component of the basal RNA polymerase II transcription machinery. It is composed of mobile elements that move relative to each other. RPB2 is part of the core element with the central large cleft, the clamp element that moves to open and close the cleft and the jaws that are thought to grab the incoming DNA template. The antibody is specific to POLR2B.

Publications notables

Autrice	Pubmed ID	Journal	Application
Huan-Yu Zhao	36328133	Biochem Pharmacol	ChIP
Hu Lei	31296070	Cancer Invest	WB

Stockage

Stockage:

Stocker à -20°C. Stable pendant un an après l'expédition.

Tampon de stockage:

PBS avec azoture de sodium à 0,02 % et glycérol à 50 % pH 7,3

L'aliquotage n'est pas nécessaire pour le stockage à -20C

*** Les 20ul contiennent 0,1% de BSA.

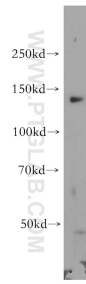
For technical support and original validation data for this product please contact:

T: 1 (888) 4PTGLAB (1-888-478-4522) (toll free in USA), or 1(312) 455-8498 (outside USA)

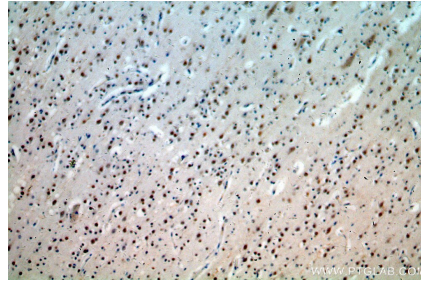
E: proteintech@ptglab.com
W: ptglab.com

This product is exclusively available under Proteintech Group brand and is not available to purchase from any other manufacturer.

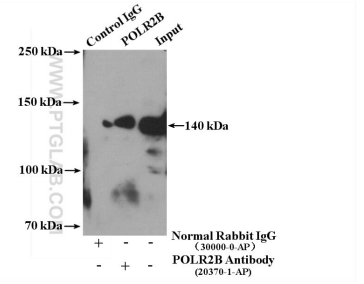
Données de validation sélectionnées



A431 cells were subjected to SDS PAGE followed by western blot with 20370-1-AP (POLR2B-Specific antibody) at dilution of 1:500 incubated at room temperature for 1.5 hours.



Immunohistochemical analysis of paraffin-embedded human brain using 20370-1-AP (POLR2B-Specific antibody) at dilution of 1:400 (under 10x lens).



IP Result of anti-POLR2B-Specific (IP:20370-1-AP, 4ug; Detection:20370-1-AP 1:300) with HeLa cells lysate 3000ug.