

À des fins de recherche uniquement

Anticorps Polyclonal de lapin anti-SFRS2



Numéro de catalogue: 20371-1-AP

5 Publications

Informations de base

Numéro de catalogue:

20371-1-AP

Taille:

150ul, Concentration: 1000 µg/ml by Nanodrop;

Hôte:

Lapin

Isotype:

IgG

Numéro d'acquisition GenBank:

NM_003016

Identification du gène (NCBI):

6427

Nom complet:

splicing factor, arginine/serine-rich 2

MW calculé

25 kDa

MW observés:

25-35 kDa

Méthode de purification:

Purification par affinité contre l'antigène

Dilutions recommandées:

WB 1:1000-1:8000

IP 0.5-4.0 µg for IP and 1:200-1:1000 for WB

IHC 1:50-1:500

Applications

Applications testées:

IHC, IP, WB, ELISA

Demandes citées:

CoIP, IF, WB

Spécificité de l'espèce:

Humain, rat, souris

Espèces citées:

Humain, souris

Contrôles positifs:

WB : cellules NIH/3T3, cellules A549, cellules HepG2, tissu cérébral de rat, tissu testiculaire de souris

IP : tissu cérébral de souris,

IHC : tissu de cancer du poumon humain,

Remarque-IHC: il est suggéré de démasquer l'antigène avec un tampon de TE buffer pH 9,0; (*) À défaut, le démasquage de l'antigène peut être effectué avec un tampon citrate pH 6,0.

Informations générales

SFRS2, also named as PR264 and Splicing component, 35 kDa, belongs to the splicing factor SR family. SFRS2 is necessary for the splicing of pre-mRNA. Some residue of SFRS2 is modified by phosphorylase and acetylase after translation. The molecular weight of modified SFRS2 is 35-40kDa. It is required for formation of the earliest ATP-dependent splicing complex and interacts with spliceosomal components bound to both the 5'- and 3'-splice sites during spliceosome assembly. It also is required for ATP-dependent interactions of both U1 and U2 snRNPs with pre-mRNA. It binds to purine-rich RNA sequences, either 5'-AGSAGAGTA-3' (S=C or G) or 5'-GTTCGAGTA-3'. SFRS2 can bind to beta-globin mRNA and commit it to the splicing pathway. The antibody has no cross reaction to SFRS2B.

Publications notables

Autrice	Pubmed ID	Journal	Application
Indranil Malik	34542927	EMBO Mol Med	CoIP
Yuhan Chen	29942010	Nat Commun	WB
Obayed Raihan	30125687	Neuroscience	WB

Stockage

Stockage:

Stocker à -20°C. Stable pendant un an après l'expédition.

Tampon de stockage:

PBS avec azoture de sodium à 0,02 % et glycérol à 50 % pH 7,3

L'aliquotage n'est pas nécessaire pour le stockage à -20C

*** Les 20ul contiennent 0,1% de BSA.

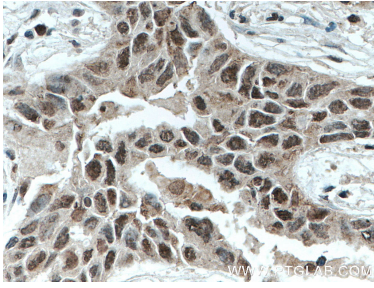
For technical support and original validation data for this product please contact:

T: 1 (888) 4PTGLAB (1-888-478-4522) (toll free in USA), or 1(312) 455-8498 (outside USA)

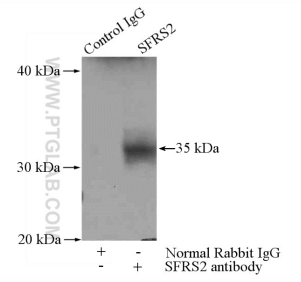
E: proteintech@ptglab.com
W: ptglab.com

This product is exclusively available under Proteintech Group brand and is not available to purchase from any other manufacturer.

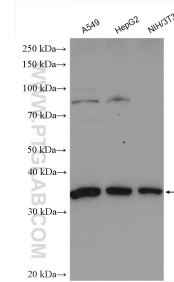
Données de validation sélectionnées



Immunohistochemical analysis of paraffin-embedded human lung cancer tissue slide using 20371-1-AP (SFRS2 antibody) at dilution of 1:200 (under 40x lens. Heat mediated antigen retrieval with Tris-EDTA buffer (pH 9.0).



IP Result of anti-SFRS2 (IP:20371-1-AP, 4ug; Detection:20371-1-AP 1:300) with mouse brain tissue lysate 4000ug.



Various lysates were subjected to SDS PAGE followed by western blot with 20371-1-AP (SFRS2 antibody) at dilution of 1:4000 incubated at room temperature for 1.5 hours.