

À des fins de recherche uniquement

Anticorps Polyclonal de lapin anti-AQP9



Numéro de catalogue: 20380-1-AP

Informations de base

Numéro de catalogue: 20380-1-AP	Numéro d'acquisition GenBank: BC026258	Méthode de purification: Purification par affinité contre l'antigène
Taille: 150ul , Concentration: 450 µg/ml by Nanodrop;	Identification du gène (NCBI): 366	Dilutions recommandées: WB 1:500-1:3000 IHC 1:250-1:1000 IF 1:50-1:500
Hôte: Lapin	Nom complet: aquaporin 9	
Isotype: IgG	MW calculé: 295 aa, 31 kDa	
Immunogen Catalog Number: AG14200	MW observés: 31 kDa	

Applications

Applications testées:

IF, IHC, WB, ELISA

Spécificité de l'espèce:

Humain, rat, souris

Remarque-IHC: il est suggéré de démasquer l'antigène avec un tampon de TE buffer pH 9,0; (*) À défaut, 'le démasquage de l'antigène peut être effectué avec un tampon citrate pH 6,0.

Contrôles positifs:

WB : cellules L02, tissu cérébral de rat, tissu cérébral de souris, tissu hépatique de rat, tissu hépatique de souris, tissu pulmonaire de souris, tissu testiculaire de rat, tissu testiculaire de souris

IHC : tissu hépatique humain,

IF : tissu hépatique humain, tissu cérébral de souris, tissu testiculaire de souris

Informations générales

Aquaporins (AQPs), also known as water channel proteins, are members of a large protein family that osmotically modulate water fluid homeostasis in several tissues. AQP9 (Aquaporin 9) is a member of the aquaporin family that acts as a water-selective membrane channel, and it may be involved in cell migration, angiogenesis, and tumor growth. AQP9 is involved in arsenic uptake in hepatocellular carcinoma cells, in which p38-MAPK may play a limited role. AQP9 was demonstrated to promote astrocytoma cell invasion and motility via the AKT pathway.

Stockage

Stockage:

Stocker à -20°C. Stable pendant un an après l'expédition.

Tampon de stockage:

PBS avec azoture de sodium à 0,02 % et glycérol à 50 % pH 7,3

L'aliquotage n'est pas nécessaire pour le stockage à -20C

*** Les 20ul contiennent 0,1% de BSA.

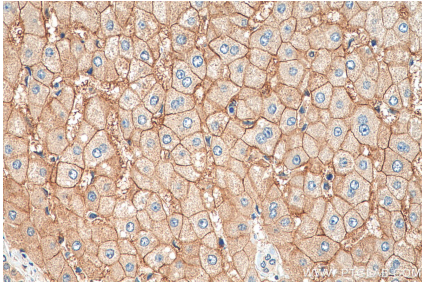
For technical support and original validation data for this product please contact:

T: 1 (888) 4PTGLAB (1-888-478-4522) (toll free in USA), or 1(312) 455-8498 (outside USA)

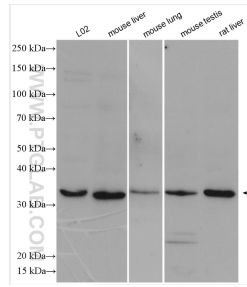
E: proteintech@ptglab.com
W: ptglab.com

This product is exclusively available under Proteintech Group brand and is not available to purchase from any other manufacturer.

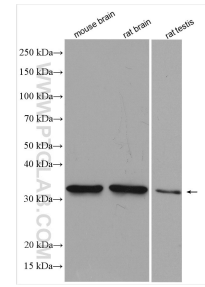
Données de validation sélectionnées



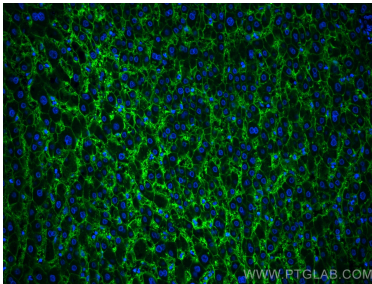
Immunohistochemical analysis of paraffin-embedded human liver tissue slide using 20380-1-AP (AQP9 antibody) at dilution of 1:500 (under 40x lens). Heat mediated antigen retrieval with Tris-EDTA buffer (pH 9.0).



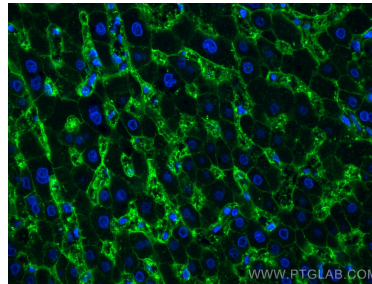
Various lysates were subjected to SDS PAGE followed by western blot with 20380-1-AP (AQP9 antibody) at dilution of 1:1500 incubated at room temperature for 1.5 hours.



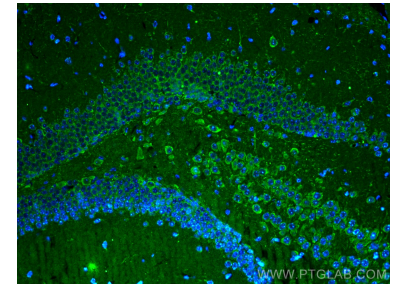
Various lysates were subjected to SDS PAGE followed by western blot with 20380-1-AP (AQP9 antibody) at dilution of 1:1500 incubated at room temperature for 1.5 hours.



Immunofluorescent analysis of (4% PFA) fixed human liver tissue using AQP9 antibody (20380-1-AP) at dilution of 1:200 and CoraLite@488-Conjugated AffiniPure Goat Anti-Rabbit IgG(H+L).



Immunofluorescent analysis of (4% PFA) fixed human liver tissue using AQP9 antibody (20380-1-AP) at dilution of 1:200 and CoraLite@488-Conjugated AffiniPure Goat Anti-Rabbit IgG(H+L).



Immunofluorescent analysis of (4% PFA) fixed mouse brain tissue using AQP9 antibody (20380-1-AP) at dilution of 1:200 and CoraLite@488-Conjugated AffiniPure Goat Anti-Rabbit IgG(H+L).