

À des fins de recherche uniquement

Anticorps Polyclonal de lapin anti-CLN3



Numéro de catalogue: 20386-1-AP

Informations de base

Numéro de catalogue: 20386-1-AP	Numéro d'acquisition GenBank: BC002394	Méthode de purification: Purification par affinité contre l'antigène
Taille: 150ul , Concentration: 300 µg/ml by Nanodrop and 247 µg/ml by Bradford method using BSA as the standard;	Identification du gène (NCBI): 1201	Dilutions recommandées: WB 1:500-1:1000 IHC 1:20-1:200 IF 1:10-1:100
Hôte: Lapin	Nom complet: ceroid-lipofuscinosis, neuronal 3	
Isotype: IgG	MW calculé 438 aa, 48 kDa	
Immunogen Catalog Number: AG14224	MW observés: 45-48 kDa	

Applications

Applications testées: IF, IHC, WB, ELISA	Contrôles positifs: WB : cellules SH-SY5Y, IHC : tissu cérébral humain, IF : cellules HepG2,
Spécificité de l'espèce: Humain, rat, souris	
Remarque-IHC: il est suggéré de démasquer l'antigène avec un tampon de TE buffer pH 9,0; (*) À défaut, le démasquage de l'antigène peut être effectué avec un tampon citrate pH 6,0.	

Informations générales

Neuronal ceroid lipofuscinosis (NCL, or Batten disease) refers to a group of lethal pediatric neurodegenerative diseases originating from mutations in one of the thus far identified 13 CLN genes (Ceroid Lipofuscinosis, Neuronal type; CLN1 to CLN14) (PMID: 25051496). CLN3 is a multi-membrane spanning protein that is involved in microtubule-dependent, anterograde transport of late endosomes and lysosomes. The CLN3 gene is located on chromosome 16p12.1 and produces three mRNA splicing variants. The 438-amino-acid CLN3 protein has a calculated molecular weight of 48 kDa. It has been reported that CLN3 can be glycosylated and form homodimeric complex (PMID: 10356317; 17286803).

Stockage

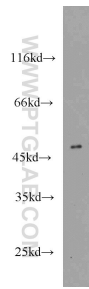
Stockage:
Stocker à -20°C. Stable pendant un an après l'expédition.
Tampon de stockage:
PBS avec azoture de sodium à 0,02 % et glycérol à 50 % pH 7,3
L'aliquotage n'est pas nécessaire pour le stockage à -20C

*** Les 20ul contiennent 0,1% de BSA.

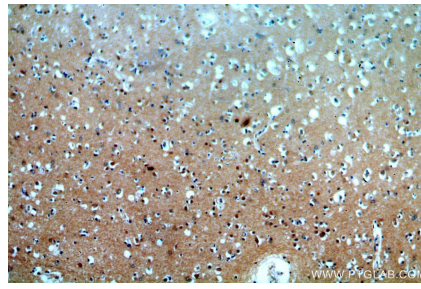
For technical support and original validation data for this product please contact:
T: 1 (888) 4PTGLAB (1-888-478-4522) (toll free in USA), or 1(312) 455-8498 (outside USA)
E: proteintech@ptglab.com
W: ptglab.com

This product is exclusively available under Proteintech Group brand and is not available to purchase from any other manufacturer.

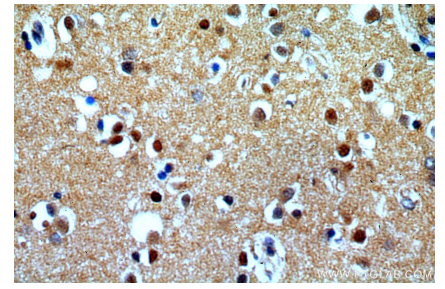
Données de validation sélectionnées



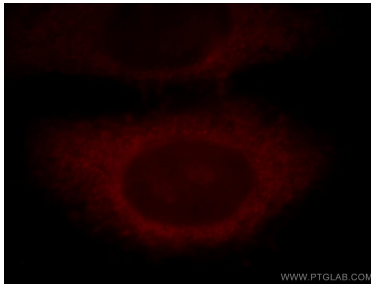
SH-SY5Y cells were subjected to SDS PAGE followed by western blot with 20386-1-AP (CLN3 antibody) at dilution of 1:800 incubated at room temperature for 1.5 hours.



Immunohistochemical analysis of paraffin-embedded human brain using 20386-1-AP (CLN3 antibody) at dilution of 1:50 (under 10x lens).



Immunohistochemical analysis of paraffin-embedded human brain using 20386-1-AP (CLN3 antibody) at dilution of 1:50 (under 40x lens).



Immunofluorescent analysis of HepG2 cells, using CLN3 antibody 20386-1-AP at 1:25 dilution and Rhodamine-labeled goat anti-rabbit IgG (red).