

À des fins de recherche uniquement

Anticorps Polyclonal de lapin anti-GLUT3



Numéro de catalogue: 20403-1-AP

50 Publications

Informations de base

Numéro de catalogue: 20403-1-AP	Numéro d'acquisition GenBank: BC039196	Méthode de purification: Purification par affinité contre l'antigène
Taille: 150ul , Concentration: 550 µg/ml by Nanodrop;	Identification du gène (NCBI): 6515	Dilutions recommandées: WB 1:2000-1:10000 IHC 1:2000-1:8000
Hôte: Lapin	Nom complet: solute carrier family 2 (facilitated glucose transporter), member 3	
Isotype: IgG	MW calculé 496 aa, 54 kDa	
Immunogen Catalog Number: AG14203	MW observés: 48-60 kDa	

Applications

Applications testées:

IHC, WB, ELISA

Demandes citées:

IF, IHC, WB

Spécificité de l'espèce:

Humain, rat, souris

Espèces citées:

Chèvre, Humain, rat, souris

Contrôles positifs:

WB : cellules HEK-293, cellules C6, cellules HeLa, cellules HepG2, cellules Jurkat, cellules U-251, tissu cérébral de rat, tissu cérébral de souris

IHC : tissu testiculaire de souris, tissu cérébral de souris, tissu de cancer du poumon humain, tissu de cancer du sein humain, tissu placentaire humain

Remarque-IHC: il est suggéré de démasquer l'antigène avec un tampon de TE buffer pH 9,0; (*) À défaut, le démasquage de l'antigène peut être effectué avec un tampon citrate pH 6,0.

Informations générales

GLUT3 (SLC2A3) belongs to the glucose transporter family (GLUTs) which mediates the transport of glucose across cellular membranes in mammalian cells. There are three subclasses within GLUTs: class I comprises the classical transporters GLUT1-4 and GLUT14; class II contains the "odd" isoforms GLUT5, 7, 9, and 11; the isoforms GLUT6, 8, 10, 12 and the proton driven myoinositol transporter HMIT (GLUT13) belong to class III. GLUT3 is considered as a neuron-specific glucose transporter because of its dominant expression in the brain in various species. However, besides the brain GLUT3 is also expressed in tissues with high demand for glucose such as sperm, preimplantation embryos, circulating white blood cells, and an array of carcinoma cell lines. Recently GLUT3 has been identified as a sensitive and specific marker for embryonal carcinomas and yolk tumors. The GLUT14 is believed to be the duplicate gene of GLUT3 given to the high identity in sequence between them. This antibody was generated against the internal region of human GLUT3 and may cross-react with GLUT14. 20403-1-AP antibody detects the bands around 48-60 kDa which depend on the glycosylation state in SDS-PAGE. (PMID: 23866118, 10336639, 9124334, 1505464, 23343953, 28574837)

Publications notables

Autrice	Pubmed ID	Journal	Application
Xing Ge	34547719	Aging (Albany NY)	IF
De Huang	25242319	Cell Rep	WB
Fangfang Wang	32949999	EBioMedicine	IF

Stockage

Stockage:

Stocker à -20°C. Stable pendant un an après l'expédition.

Tampon de stockage:

PBS avec azoture de sodium à 0,02 % et glycérol à 50 % pH 7,3

L'aliquoteage n'est pas nécessaire pour le stockage à -20C

*** Les 20ul contiennent 0,1% de BSA.

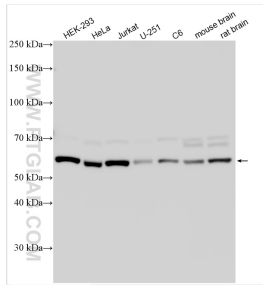
For technical support and original validation data for this product please contact:

T: 1 (888) 4PTGLAB (1-888-478-4522) (toll free in USA), or 1(312) 455-8498 (outside USA)

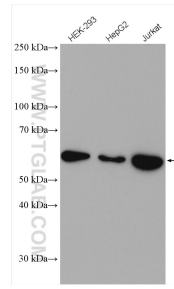
E: proteintech@ptglab.com
W: ptglab.com

This product is exclusively available under Proteintech Group brand and is not available to purchase from any other manufacturer.

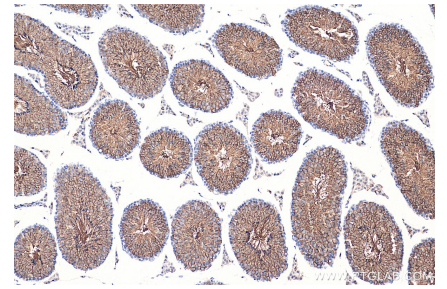
Données de validation sélectionnées



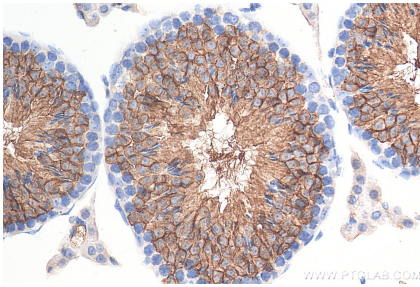
Various lysates were subjected to SDS PAGE followed by western blot with 20403-1-AP (GLUT3 antibody) at dilution of 1:5000 incubated at room temperature for 1.5 hours.



Various lysates were subjected to SDS PAGE followed by western blot with 20403-1-AP (GLUT3 antibody) at dilution of 1:1500 incubated at room temperature for 1.5 hours.



Immunohistochemical analysis of paraffin-embedded mouse testis tissue slide using 20403-1-AP (GLUT3 antibody) at dilution of 1:4000 (under 10x lens). Heat mediated antigen retrieval with Tris-EDTA buffer (pH 9.0).



Immunohistochemical analysis of paraffin-embedded mouse testis tissue slide using 20403-1-AP (GLUT3 antibody) at dilution of 1:4000 (under 40x lens). Heat mediated antigen retrieval with Tris-EDTA buffer (pH 9.0).