

À des fins de recherche uniquement

Anticorps Polyclonal de lapin anti-MIF



Numéro de catalogue: 20415-1-AP

Phare

12 Publications

Informations de base

Numéro de catalogue:
20415-1-AP

Taille:
150ul, Concentration: 500 µg/ml by
Nanodrop;

Hôte:
Lapin

Isotype:
IgG

Immunogen Catalog Number:
AG14058

Numéro d'acquisition GenBank:
BC000447

Identification du gène (NCBI):
4282

Nom complet:
macrophage migration inhibitory
factor (glycosylation-inhibiting
factor)

MW calculé
115 aa, 12 kDa

MW observés:
12 kDa

Méthode de purification:
Purification par affinité contre
l'antigène

Dilutions recommandées:
WB 1:500-1:2000
IP 0.5-4.0 ug for IP and 1:500-1:2000
for WB
IF 1:50-1:500

Applications

Applications testées:
FC, IF, IP, WB, ELISA

Demandes citées:
IF, WB

Spécificité de l'espèce:
Humain, rat, souris

Espèces citées:
Humain, rat, souris

Contrôles positifs:

WB : cellules A549, cellules HEK-293T, cellules HL-60,
cellules HUVEC, cellules Jurkat, cellules MG U-87,
cellules U-937, cellules Y79, tissu splénique de rat

IP : tissu splénique de souris,

IF : cellules U-251,

Informations générales

MIF is a pleiotropic cytokine that contributes to the pathogenesis of many autoimmune diseases through its upstream immunoregulatory function and its polymorphic genetic locus. MIF is a highly conserved protein of 12.5 kDa, with evolutionarily ancient homologues in plants, protozoans, nematodes, and invertebrates.

Publications notables

Autrice	Pubmed ID	Journal	Application
Rui-Min Liu	29079416	Cancer Lett	WB,IHC
Langdong Chen	27754507	Mol Biosyst	
Xing Guo	29113309	Oncotarget	WB,IHC

Stockage

Stockage:

Stocker à -20°C. Stable pendant un an après l'expédition.

Tampon de stockage:

PBS avec azoture de sodium à 0,02 % et glycérol à 50 % pH 7,3

L'aliquotage n'est pas nécessaire pour le stockage à -20C

*** Les 20ul contiennent 0,1% de BSA.

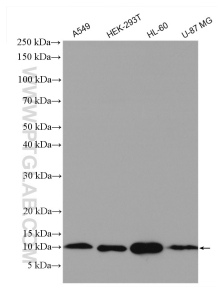
For technical support and original validation data for this product please contact:

T: 1 (888) 4PTGLAB (1-888-478-4522) (toll free
in USA), or 1(312) 455-8498 (outside USA)

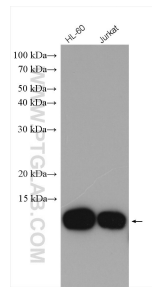
E: proteintech@ptglab.com
W: ptglab.com

This product is exclusively available under Proteintech Group brand and is not available to purchase from any other manufacturer.

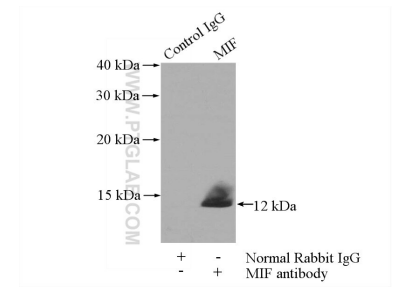
Données de validation sélectionnées



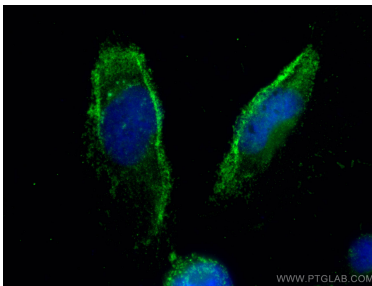
Various lysates were subjected to SDS PAGE followed by western blot with 20415-1-AP (MIF antibody) at dilution of 1:1000 incubated at room temperature for 1.5 hours.



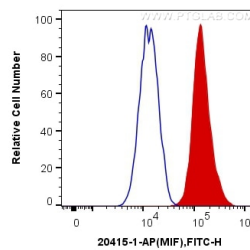
Various lysates were subjected to SDS PAGE followed by western blot with 20415-1-AP (MIF antibody) at dilution of 1:1000 incubated at room temperature for 1.5 hours.



IP Result of anti-MIF (IP:20415-1-AP, 4ug; Detection:20415-1-AP 1:1.000) with mouse spleen tissue lysate 4000ug.



Immunofluorescent analysis of (-20°C Ethanol) fixed U-251 cells using MIF antibody (20415-1-AP) at dilution of 1:200 and CoraLite®488-Conjugated AffiniPure Goat Anti-Rabbit IgG(H+L).



1X10⁶ THP-1 cells were intracellularly stained with 0.4 ug Anti-Human MIF (20415-1-AP) and CoraLite®488-Conjugated AffiniPure Goat Anti-Rabbit IgG(H+L) at dilution 1:1000 (red), or 0.4 ug Control Antibody. Cells were fixed with 4% PFA and permeabilized with Flow Cytometry Perm Buffer (PF00011-C).