

À des fins de recherche uniquement

# Anticorps Polyclonal de lapin anti-CXCR7



Numéro de catalogue: 20423-1-AP

Phare

17 Publications

## Informations de base

Numéro de catalogue:

20423-1-AP

Taille:

150ul, Concentration: 153 µg/ml by Bradford method using BSA as the standard;

Hôte:

Lapin

Isotype:

IgG

Immunogen Catalog Number:

AG14247

Numéro d'acquisition GenBank:

BC036661

Identification du gène (NCBI):

57007

Nom complet:

chemokine (C-X-C motif) receptor 7

MW calculé

362 aa, 41 kDa

MW observés:

45-50 kDa

Méthode de purification:

Purification par affinité contre l'antigène

Dilutions recommandées:

WB 1:500-1:1000

IP 0.5-4.0 ug for IP and 1:500-1:1000 for WB

IHC 1:50-1:500

## Applications

Applications testées:

FC, IHC, IP, WB, ELISA

Demandes citées:

IF, IHC, WB

Spécificité de l'espèce:

Humain, rat, souris

Espèces citées:

Humain, rat, souris

**Remarque-IHC: il est suggéré de démasquer l'antigène avec un tampon de TE buffer pH 9,0; (\*) A défaut, 'le démasquage de l'antigène peut être effectué avec un tampon citrate pH 6,0.**

Contrôles positifs:

WB : cellules Raji, cellules Jurkat, cellules K-562, tissu de thymus de souris

IP : cellules HUVEC,

IHC : tissu cérébral de souris,

## Informations générales

CXCR7 (C-X-C chemokine receptor type 7), also known as RDC1, is a member of the G-protein coupled receptor family. CXCR7 can bind the chemokines CXCL11 and CXCL12 with high affinity, and it also acts as coreceptor with CXCR4 for a restricted number of HIV isolates. Expression of CXCR7 has been associated with cardiac development as well as with tumor growth and progression. This antibody recognizes endogenous CXCR7, which has an experimentally determined molecular weight of 50 kDa (PMID: 20197403; 20388803).

## Publications notables

Autrice	Pubmed ID	Journal	Application
Lulu Chen	32876991	Cell Biol Int	WB,IF,IHC
Liang Kuang	31662319	Ann Rheum Dis	WB
Xiang Li	36405246	J Oncol	WB

## Stockage

Stockage:

Stocker à -20°C. Stable pendant un an après l'expédition.

Tampon de stockage:

PBS avec azoture de sodium à 0,02 % et glycérol à 50 % pH 7,3

L'aliquotage n'est pas nécessaire pour le stockage à -20C

\*\*\* Les 20ul contiennent 0,1% de BSA.

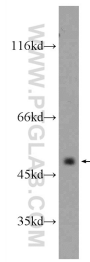
For technical support and original validation data for this product please contact:

T: 1 (888) 4PTGLAB (1-888-478-4522) (toll free in USA), or 1(312) 455-8498 (outside USA)

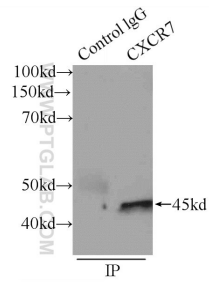
E: proteintech@ptglab.com  
W: ptglab.com

This product is exclusively available under Proteintech Group brand and is not available to purchase from any other manufacturer.

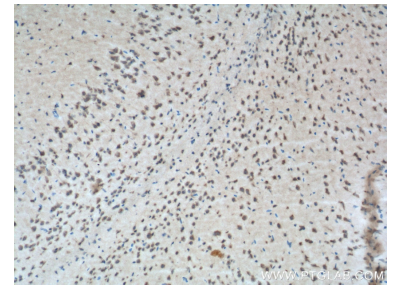
## Données de validation sélectionnées



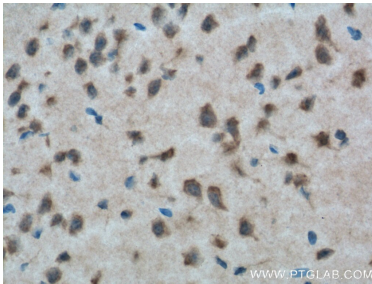
Raji cells were subjected to SDS PAGE followed by western blot with 20423-1-AP (CXCR7 antibody) at dilution of 1:500 incubated at room temperature for 1.5 hours.



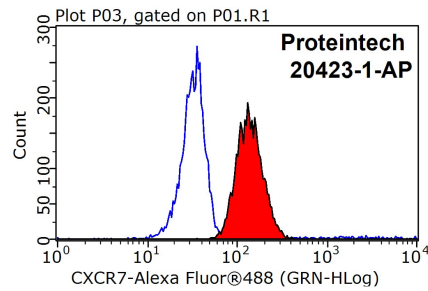
IP Result of anti-CXCR7 (IP:20423-1-AP, 3ug; Detection:20423-1-AP 1:500) with HUVEC cells lysate 1400ug.



Immunohistochemical analysis of paraffin-embedded mouse brain tissue slide using 20423-1-AP (CXCR7 Antibody) at dilution of 1:200 (under 10x lens). Heat mediated antigen retrieval with Tris-EDTA buffer (pH 9.0).



Immunohistochemical analysis of paraffin-embedded mouse brain tissue slide using 20423-1-AP (CXCR7 Antibody) at dilution of 1:200 (under 40x lens). Heat mediated antigen retrieval with Tris-EDTA buffer (pH 9.0).



1X10<sup>6</sup> Raji cells were stained with 0.2ug CXCR7 antibody (20423-1-AP, red) and control antibody (blue). Fixed with 90% MeOH blocked with 3% BSA (30 min). Alexa Fluor 488-conjugated AffiniPure Goat Anti-Rabbit IgG(H+L) with dilution 1:1000.