

À des fins de recherche uniquement

# Anticorps Polyclonal de lapin anti-GLUT2



Numéro de catalogue: 20436-1-AP

Phare

53 Publications

## Informations de base

Numéro de catalogue:

20436-1-AP

Taille:

150ul, Concentration: 550 µg/ml by Nanodrop;

Hôte:

Lapin

Isotype:

IgG

Immunogen Catalog Number:

AG14204

Numéro d'acquisition GenBank:

BC060041

Identification du gène (NCBI):

6514

Nom complet:

solute carrier family 2 (facilitated glucose transporter), member 2

MW calculé

57 kDa

MW observés:

60-70 kDa, 38-45 kDa

Méthode de purification:

Purification par affinité contre l'antigène

Dilutions recommandées:

WB 1:500-1:3000

IP 0.5-4.0 ug for IP and 1:500-1:2000 for WB

IHC 1:50-1:500

## Applications

Applications testées:

IHC, IP, WB, ELISA

Demandes citées:

IF, IHC, WB

Spécificité de l'espèce:

Humain, rat, souris

Espèces citées:

Humain, rat, souris, Lasiopodomys Brandtii

**Remarque-IHC: il est suggéré de démasquer l'antigène avec un tampon de TE buffer pH 9,0; (\*) À défaut, le démasquage de l'antigène peut être effectué avec un tampon citrate pH 6,0.**

Contrôles positifs:

WB : cellules Caco-2, cellules HEK 293, cellules HepG2, cellules NIH/3T3, tissu hépatique de rat, tissu hépatique de souris, tissu rénal de souris

IP : tissu rénal de souris,

IHC : tissu pancréatique de souris,

## Informations générales

GLUT2 is a member of glucose transporters or GLUTs which catalyze the glucose transport across plasma membrane. GLUT2 is selectively expressed in hepatocytes, pancreatic beta cells, and absorptive renal and intestinal epithelial cells. GLUT2 is required to maintain normal glucose homeostasis and normal function and development of the endocrine pancreas. Its absence leads to symptoms characteristic of non-insulin-dependent diabetes mellitus. This antibody detected 60-70 kDa fully glycosylated, matured GLUT2 and a nonglycosylated form of GLUT2 around 38-45 kDa. (9354799, 12101013)

## Publications notables

Autrice	Pubmed ID	Journal	Application
Wei Xu	32935679	Food Funct	WB
Miao Liu	36063979	Life Sci	WB,IF
Yan Zhu	32875583	J Food Biochem	WB

## Stockage

Stockage:

Stocker à -20°C. Stable pendant un an après l'expédition.

Tampon de stockage:

PBS avec azoture de sodium à 0,02 % et glycérol à 50 % pH 7,3

L'aliquotage n'est pas nécessaire pour le stockage à -20C

\*\*\* Les 20ul contiennent 0,1% de BSA.

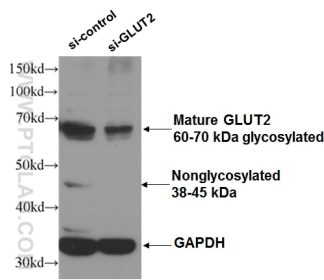
For technical support and original validation data for this product please contact:

T: 1 (888) 4PTGLAB (1-888-478-4522) (toll free in USA), or 1(312) 455-8498 (outside USA)

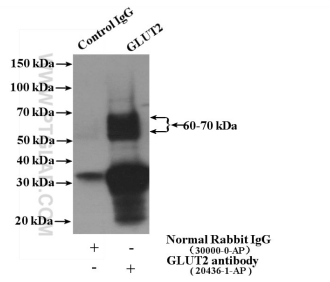
E: [proteintech@ptglab.com](mailto:proteintech@ptglab.com)  
W: [ptglab.com](http://ptglab.com)

This product is exclusively available under Proteintech Group brand and is not available to purchase from any other manufacturer.

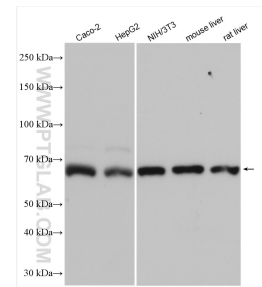
## Données de validation sélectionnées



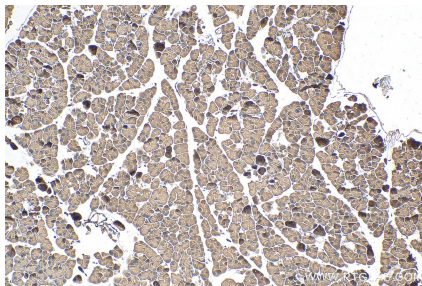
WB result of GLUT2 antibody (20436-1-AP, 1:300) with si-Control and si-GLUT2 transfected HEK 293 cells.



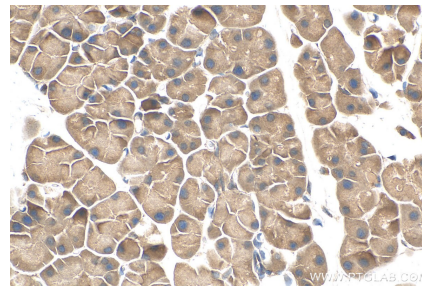
IP Result of anti-GLUT2 (IP:20436-1-AP, 4ug; Detection:20436-1-AP 1:1000) with mouse kidney tissue lysate 4000ug.



Various lysates were subjected to SDS PAGE followed by western blot with 20436-1-AP (GLUT2 antibody) at dilution of 1:1500 incubated at room temperature for 1.5 hours.



Immunohistochemical analysis of paraffin-embedded mouse pancreas tissue slide using 20436-1-AP (GLUT2 antibody) at dilution of 1:200 (under 10x lens). Heat mediated antigen retrieval with Tris-EDTA buffer (pH 9.0).



Immunohistochemical analysis of paraffin-embedded mouse pancreas tissue slide using 20436-1-AP (GLUT2 antibody) at dilution of 1:200 (under 40x lens). Heat mediated antigen retrieval with Tris-EDTA buffer (pH 9.0).