

À des fins de recherche uniquement

# Anticorps Polyclonal de lapin anti-EDG2



Numéro de catalogue: 20442-1-AP

1 Publications

## Informations de base

Numéro de catalogue: 20442-1-AP	Numéro d'acquisition GenBank: BC030615	Méthode de purification: Purification par affinité contre l'antigène
Taille: 150ul , Concentration: 700 µg/ml by Nanodrop;	Identification du gène (NCBI): 1902	Dilutions recommandées: WB 1:300-1:1000 IHC 1:50-1:500
Hôte: Lapin	Nom complet: lysophosphatidic acid receptor 1	
Isotype: IgG	MW calculé: 364 aa, 41 kDa	
Immunogen Catalog Number: AG14253	MW observés: 41-50 kDa	

## Applications

Applications testées:  
IHC, WB, ELISA

Demandes citées:  
WB

Spécificité de l'espèce:  
Humain, souris

Espèces citées:  
Humain

Contrôles positifs:

WB : cellules Jurkat, cellules A2780, cellules A375, cellules A549, cellules HeLa, cellules NIH3T3, multi-cellules/tissus, tissu cérébral de souris

IHC : tissu cérébral humain, tissu cérébral de souris

**Remarque-IHC: il est suggéré de démasquer l'antigène avec un tampon de TE buffer pH 9,0; (\*) À défaut, le démasquage de l'antigène peut être effectué avec un tampon citrate pH 6,0.**

## Informations générales

EDG2 (also known as LPA1) is a G-protein coupled receptor for lysophosphatidic acid (LPA), a potent motility inducing factor, which is a major component of serum (PMID: 19415462). EDG2 is widely expressed in normal tissue during growth and development. In the context of cancer, several studies have suggested that EDG2 expression in tumors is often similar to that shown in normal tissue (PMID: 17496233).

## Publications notables

Autrice	Pubmed ID	Journal	Application
Junting Cai	28348461	Mediators Inflamm	WB

## Stockage

Stockage:

Stocker à -20°C. Stable pendant un an après l'expédition.

Tampon de stockage:

PBS avec azoture de sodium à 0,02 % et glycérol à 50 % pH 7,3

L'aliquotage n'est pas nécessaire pour le stockage à -20C

\*\*\* Les 20ul contiennent 0,1% de BSA.

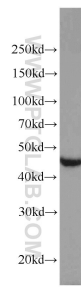
For technical support and original validation data for this product please contact:

T: 1 (888) 4PTGLAB (1-888-478-4522) (toll free in USA), or 1(312) 455-8498 (outside USA)

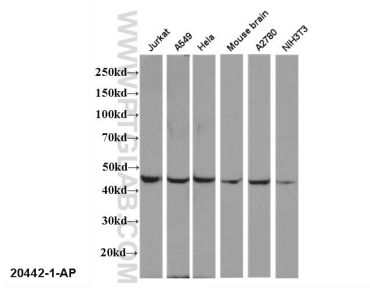
E: [proteintech@ptglab.com](mailto:proteintech@ptglab.com)  
W: [ptglab.com](http://ptglab.com)

This product is exclusively available under Proteintech Group brand and is not available to purchase from any other manufacturer.

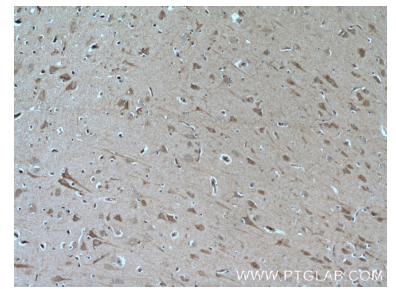
## Données de validation sélectionnées



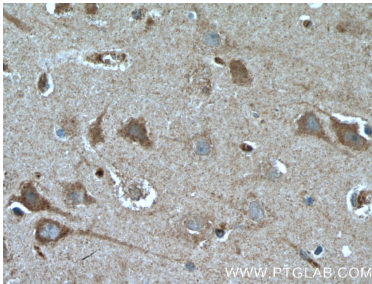
Jurkat cells were subjected to SDS PAGE followed by western blot with 20442-1-AP (EDG2 antibody) at dilution of 1:1000 incubated at room temperature for 1.5 hours.



Multi-cells/tissue were subjected to SDS PAGE followed by western blot with 20442-1-AP (EDG2 antibody) at dilution of 1:1000 incubated at room temperature for 1.5 hours.



Immunohistochemical analysis of paraffin-embedded human brain tissue slide using 20442-1-AP (LPAR1, EDG2 Antibody) at dilution of 1:100 (under 10x lens). Heat mediated antigen retrieval with Tris-EDTA buffer (pH 9.0).



Immunohistochemical analysis of paraffin-embedded human brain tissue slide using 20442-1-AP (LPAR1, EDG2 Antibody) at dilution of 1:100 (under 40x lens). Heat mediated antigen retrieval with Tris-EDTA buffer (pH 9.0).