

À des fins de recherche uniquement

# Anticorps Polyclonal de lapin anti-SMN



Numéro de catalogue: 20451-1-AP

Phare

## Informations de base

Numéro de catalogue:

20451-1-AP

Taille:

150ul, Concentration: 350 µg/ml by Nanodrop and 307 µg/ml by Bradford method using BSA as the standard;

Hôte:

Lapin

Isotype:

IgG

Immunogen Catalog Number:

AG14333

Numéro d'acquisition GenBank:

BC000908

Identification du gène (NCBI):

6607

Nom complet:

survival of motor neuron 2, centromeric

MW calculé

282 aa, 30 kDa

MW observés:

38 kDa

Méthode de purification:

Purification par affinité contre l'antigène

Dilutions recommandées:

WB 1:500-1:3000

IP 0.5-4.0 ug for IP and 1:200-1:1000 for WB

IHC 1:50-1:200

IF 1:400-1:1600

## Applications

Applications testées:

IF, IHC, IP, WB, ELISA

Spécificité de l'espèce:

Humain, souris

**Remarque-IHC: il est suggéré de démasquer l'antigène avec un tampon de TE buffer pH 9.0; (\*) À défaut, 'le démasquage de l'antigène peut être effectué avec un tampon citrate pH 6.0.**

Contrôles positifs:

WB: cellules HEK-293, cellules HeLa, cellules HepG2, cellules Jurkat, cellules K-562

IP: cellules HEK-293,

IHC: tissu rénal humain, tissu cardiaque humain

IF: cellules HepG2,

## Informations générales

Spinal muscular atrophy (SMA) is an autosomal recessive neurodegenerative disease characterized by loss of anterior horn cells in the spinal cord and concomitant symmetrical muscle weakness and atrophy (PMID: 16364894). SMA is caused by deletion or mutations of the survival motor neuron (SMN1) gene. SMA patients lack a functional SMN1 gene, but they possess an intact SMN2 gene, which though nearly identical to SMN1, is only partially functional (PMID: 17355180). A large majority of SMN2 transcripts lack exon 7, resulting in production of a truncated, less stable SMN protein (PMID: 10369862). The level of SMN protein correlates with phenotypic severity of SMA.

## Stockage

Stockage:

Stocker à -20°C. Stable pendant un an après l'expédition.

Tampon de stockage:

PBS avec azoture de sodium à 0,02 % et glycérol à 50 % pH 7,3

L'aliquotage n'est pas nécessaire pour le stockage à -20C

\*\*\* Les 20ul contiennent 0,1% de BSA.

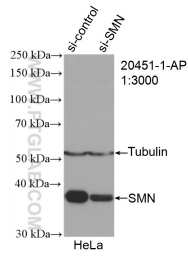
For technical support and original validation data for this product please contact:

T: 1 (888) 4PTGLAB (1-888-478-4522) (toll free in USA), or 1(312) 455-8498 (outside USA)

E: [proteintech@ptglab.com](mailto:proteintech@ptglab.com)  
W: [ptglab.com](http://ptglab.com)

This product is exclusively available under Proteintech Group brand and is not available to purchase from any other manufacturer.

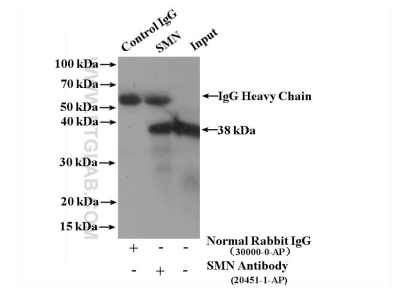
## Données de validation sélectionnées



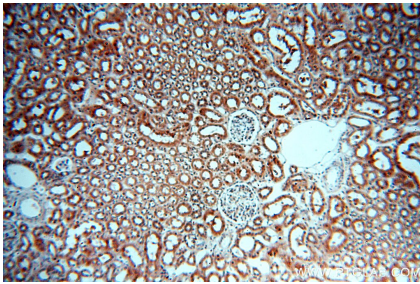
WB result of SMN antibody (20451-1-AP; 1:3000; incubated at room temperature for 1.5 hours) with sh-Control and sh-SMN transfected HeLa cells.



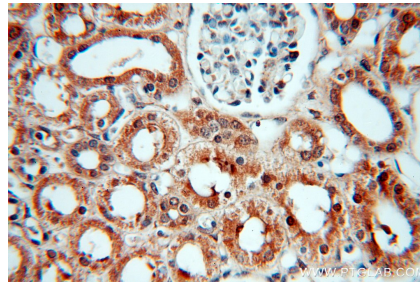
HEK-293 cells were subjected to SDS PAGE followed by western blot with 20451-1-AP (SMN antibody) at dilution of 1:800 incubated at room temperature for 1.5 hours.



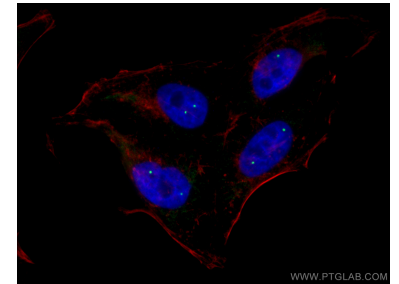
IP result of anti-SMN (IP: 20451-1-AP, 4ug; Detection: 20451-1-AP 1:300) with HEK-293 cells lysate 2000 ug.



Immunohistochemical analysis of paraffin-embedded human kidney using 20451-1-AP (SMN antibody) at dilution of 1:100 (under 10x lens).



Immunohistochemical analysis of paraffin-embedded human kidney using 20451-1-AP (SMN antibody) at dilution of 1:100 (under 40x lens).



Immunofluorescent analysis of (4% PFA) fixed HepG2 cells using SMN antibody (20451-1-AP) at dilution of 1:800 and CoraLite@488-Conjugated AffiniPure Goat Anti-Rabbit IgG(H+L), CL594-Phalloidin (red).