

À des fins de recherche uniquement

Anticorps Polyclonal de lapin anti-SLC37A2



Numéro de catalogue: 20469-1-AP

Informations de base

Numéro de catalogue: 20469-1-AP	Numéro d'acquisition GenBank: BC051314	Méthode de purification: Purification par affinité contre l'antigène
Taille: 150ul , Concentration: 200 µg/ml by Nanodrop and 133 µg/ml by Bradford method using BSA as the standard;	Identification du gène (NCBI): 219855	Dilutions recommandées: WB 1:300-1:600
Hôte: Lapin	Nom complet: solute carrier family 37 (glycerol-3-phosphate transporter), member 2	
Isotype: IgG	MW calculé: 505 aa, 55 kDa	
Immunogen Catalog Number: AG14306	MW observés: 50-75 kDa	

Applications

Applications testées: WB, ELISA	Contrôles positifs: WB : tissu de thymus de souris, cellules HeLa, cellules RAW 264.7, tissu de thymus de rat, tissu splénique de souris
Spécificité de l'espèce: Humain, rat, souris	

Informations générales

The solute carrier family 37 (SLC37) consists of four sugar-phosphate exchangers, A1, A2, A3, and A4, which are anchored in the endoplasmic reticulum (ER) membrane (PMID:23506893). Solute Carrier Family 37 Member 2 (SLC37A2), also known as SPX2, was firstly identified in a work, conducted on mice and aimed to detect cAMP inducible genes playing a role in promoting cholesterol efflux from the macrophage cell line RAW264 via apoE and apoA1 (PMID:11004510). Interestingly, of the four SLC37A members, SLC37A2 displays the highest level of transcript abundance in neutrophils and macrophages, indicating that SLC37A2 may play an essential role in regulating innate immune function (PMID:32428862).

Stockage

Stockage:
Stocker à -20°C. Stable pendant un an après l'expédition.
Tampon de stockage:
PBS avec azoture de sodium à 0,02 % et glycérol à 50 % pH 7,3
L'aliquotage n'est pas nécessaire pour le stockage à -20C

*** Les 20ul contiennent 0,1% de BSA.

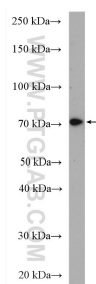
For technical support and original validation data for this product please contact:

T: 1 (888) 4PTGLAB (1-888-478-4522) (toll free in USA), or 1(312) 455-8498 (outside USA)

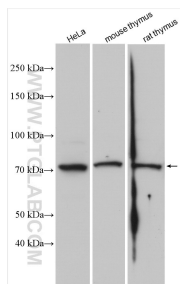
E: proteintech@ptglab.com
W: ptglab.com

This product is exclusively available under Proteintech Group brand and is not available to purchase from any other manufacturer.

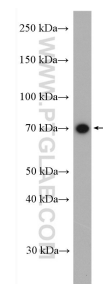
Données de validation sélectionnées



mouse thymus tissue were subjected to SDS PAGE followed by western blot with 20469-1-AP (SLC37A2 antibody) at dilution of 1:500 incubated at room temperature for 1.5 hours.



Various lysates were subjected to SDS PAGE followed by western blot with 20469-1-AP (SLC37A2 antibody) at dilution of 1:1500 incubated at room temperature for 1.5 hours.



mouse spleen tissue were subjected to SDS PAGE followed by western blot with 20469-1-AP (SLC37A2 antibody) at dilution of 1:500 incubated at room temperature for 1.5 hours.