

À des fins de recherche uniquement

Anticorps Polyclonal de lapin anti-EIF2AK1



Numéro de catalogue: 20499-1-AP

Phare

8 Publications

Informations de base

Numéro de catalogue:

20499-1-AP

Taille:

150ul, Concentration: 550 µg/ml by Nanodrop;

Hôte:

Lapin

Isotype:

IgG

Immunogen Catalog Number:

AG14236

Numéro d'acquisition GenBank:

BC006524

Identification du gène (NCBI):

27102

Nom complet:

eukaryotic translation initiation factor 2-alpha kinase 1

MW calculé

630 aa, 71 kDa

MW observés:

71 kDa

Méthode de purification:

Purification par affinité contre l'antigène

Dilutions recommandées:

WB 1:1000-1:6000

IHC 1:50-1:500

IF 1:50-1:500

Applications

Applications testées:

IF, IHC, WB, ELISA

Demandes citées:

CoIP, IP, WB

Spécificité de l'espèce:

Humain

Espèces citées:

Humain

Contrôles positifs:

WB : cellules HeLa, cellules HEK-293, cellules HepG2, cellules K-562, cellules MCF-7

IHC : tissu de cancer du sein humain,

IF : cellules HepG2,

Remarque-IHC: il est suggéré de démasquer l'antigène avec un tampon de TE buffer pH 9,0; (*) À défaut, le démasquage de l'antigène peut être effectué avec un tampon citrate pH 6,0.

Informations générales

Eukaryotic initiation factor 2a (eIF2a), which is a critical component in the formation of the translation initiation ternary complex (eIF2a/GTP/methionyl transfer RNA), plays a key role in the ER stress response. EIF2AK1, which is activated by heme deficiency and other stimuli, is a major kinase that phosphorylates EIF2-alpha. Phosphorylation of the alpha subunit of EIF2 downregulates protein synthesis in response to various stress conditions. EIF2AK1 has some isoforms with 630aa, 577aa and 422aa.

Publications notables

Autrice	Pubmed ID	Journal	Application
Halime Kalkavan	36055199	Cell	WB,IP
Stefan Bauernfried	33243852	Science	WB
Jack Chun-Chieh Hsu	35316659	Mol Cell	WB

Stockage

Stockage:

Stocker à -20°C. Stable pendant un an après l'expédition.

Tampon de stockage:

PBS avec azoture de sodium à 0,02 % et glycérol à 50 % pH 7,3

L'aliquotage n'est pas nécessaire pour le stockage à -20C

*** Les 20ul contiennent 0,1% de BSA.

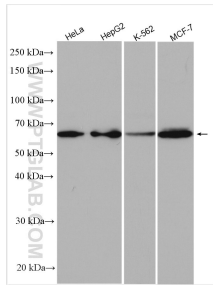
For technical support and original validation data for this product please contact:

T: 1 (888) 4PTGLAB (1-888-478-4522) (toll free in USA), or 1(312) 455-8498 (outside USA)

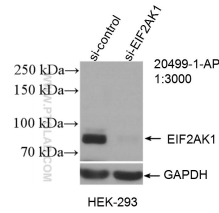
E: proteintech@ptglab.com
W: ptglab.com

This product is exclusively available under Proteintech Group brand and is not available to purchase from any other manufacturer.

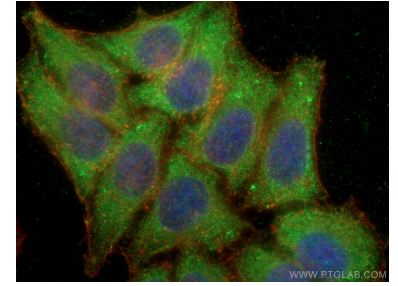
Données de validation sélectionnées



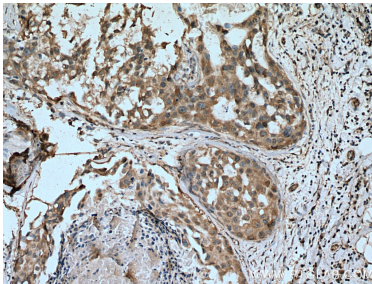
Various lysates were subjected to SDS PAGE followed by western blot with 20499-1-AP (EIF2AK1 antibody) at dilution of 1:3000 incubated at room temperature for 1.5 hours.



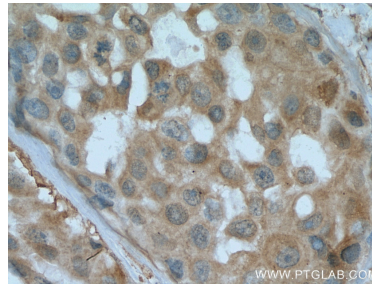
WB result of EIF2AK1 antibody (20499-1-AP; 1:3000; incubated at room temperature for 1.5 hours) with sh-Control and sh-EIF2AK1 transfected HEK-293 cells.



Immunofluorescent analysis of (-20°C Ethanol) fixed HepG2 cells using EIF2AK1 antibody (20499-1-AP) at dilution of 1:200 and CoraLite@488-Conjugated AffiniPure Goat Anti-Rabbit IgG(H+L), CL594-Phalloidin (red).



Immunohistochemical analysis of paraffin-embedded human breast cancer tissue slide using 20499-1-AP (EIF2AK1 antibody) at dilution of 1:200 (under 10x lens). Heat mediated antigen retrieval with Tris-EDTA buffer (pH 9.0).



Immunohistochemical analysis of paraffin-embedded human breast cancer tissue slide using 20499-1-AP (EIF2AK1 antibody) at dilution of 1:200 (under 40x lens). Heat mediated antigen retrieval with Tris-EDTA buffer (pH 9.0).