

À des fins de recherche uniquement

Anticorps Polyclonal de lapin anti-SPON2



Numéro de catalogue: 20513-1-AP

Phare

4 Publications

Informations de base

Numéro de catalogue: 20513-1-AP	Numéro d'acquisition GenBank: BC002707	Méthode de purification: Purification par affinité contre l'antigène
Taille: 150ul , Concentration: 550 µg/ml by Nanodrop and 413 µg/ml by Bradford method using BSA as the standard;	Identification du gène (NCBI): 10417	Dilutions recommandées: WB 1:500-1:1000 IHC 1:50-1:500
Hôte: Lapin	Nom complet: spondin 2, extracellular matrix protein	
Isotype: IgG	MW calculé 331 aa, 36 kDa	
Immunogen Catalog Number: AG14337	MW observés: 38 kDa	

Applications

Applications testées: IHC, WB, ELISA	Contrôles positifs: WB : cellules LNCaP, IHC : tissu de cancer de la prostate humaine, tissu d'hyperplasie de la prostate humaine
Demandes citées: IF, IHC, WB	
Spécificité de l'espèce: Humain	
Espèces citées: Humain, souris	
Remarque-IHC: il est suggéré de démasquer l'antigène avec un tampon de TE buffer pH 9,0; (*) À défaut, 'le démasquage de l'antigène peut être effectué avec un tampon citrate pH 6,0.	

Informations générales

SPON2 (Spondin 2), also known as Mindin, is a member of the F-spondin family of secreted extracellular matrix proteins. This protein has been implicated in axon guidance, immune response and adhesion. SPON2 is essential in the initiation of the innate immune response and represents a unique pattern-recognition molecule in the ECM for microbial pathogens (PMID: 14691481). It also functions as an integrin ligand for inflammatory cell recruitment and T-cell priming (PMID: 19153605). Besides, SPON2 has been reported as a prognostic biomarker for ovarian and prostate cancer (PMID: 17490732; 22615945; 23665271).

Publications notables

Autrice	Pubmed ID	Journal	Application
Haoming Lu	31691494	J Cell Mol Med	WB
Jianlei Zhang	34136486	Front Cell Dev Biol	IHC
Nan Li	32974343	Front Cell Dev Biol	WB, IF

Stockage

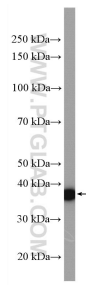
Stockage:
Stocker à -20°C. Stable pendant un an après l'expédition.
Tampon de stockage:
PBS avec azoture de sodium à 0,02 % et glycérol à 50 % pH 7,3
L'aliquotage n'est pas nécessaire pour le stockage à -20C

*** Les 20ul contiennent 0,1% de BSA.

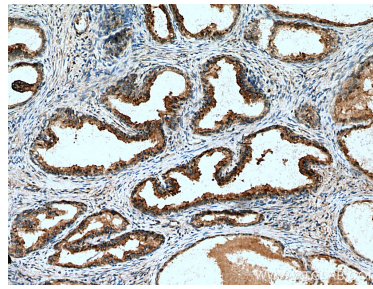
For technical support and original validation data for this product please contact:
T: 1 (888) 4PTGLAB (1-888-478-4522) (toll free in USA), or 1(312) 455-8498 (outside USA)
E: proteintech@ptglab.com
W: ptglab.com

This product is exclusively available under Proteintech Group brand and is not available to purchase from any other manufacturer.

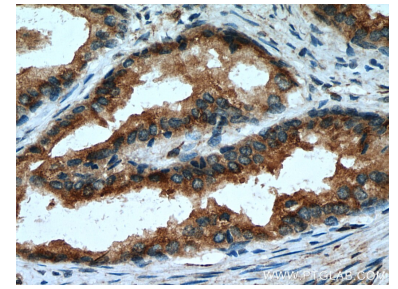
Données de validation sélectionnées



LNCaP cells were subjected to SDS PAGE followed by western blot with 20513-1-AP (SPON2 antibody) at dilution of 1:600 incubated at room temperature for 1.5 hours.



Immunohistochemical analysis of paraffin-embedded human prostate cancer tissue slide using 20513-1-AP (SPON2 antibody) at dilution of 1:200 (under 10x lens). Heat mediated antigen retrieval with Tris-EDTA buffer (pH 9.0).



Immunohistochemical analysis of paraffin-embedded human prostate cancer tissue slide using 20513-1-AP (SPON2 antibody) at dilution of 1:200 (under 40x lens). Heat mediated antigen retrieval with Tris-EDTA buffer (pH 9.0).