

À des fins de recherche uniquement

Anticorps Polyclonal de lapin anti-IL-20RB



Numéro de catalogue: 20521-1-AP

Informations de base

Numéro de catalogue:

20521-1-AP

Taille:

150ul, Concentration: 450 µg/ml by Nanodrop and 267 µg/ml by Bradford method using BSA as the standard;

Hôte:

Lapin

Isotype:

IgG

Immunogen Catalog Number:

AG14368

Numéro d'acquisition GenBank:

BC033292

Identification du gène (NCBI):

53833

Nom complet:

interleukin 20 receptor beta

MW calculé

311 aa, 35 kDa

MW observés:

45 kDa, 66-70 kDa

Méthode de purification:

Purification par affinité contre l'antigène

Dilutions recommandées:

WB 1:500-1:2400

IF 1:10-1:100

Applications

Applications testées:

FC, IF, WB, ELISA

Spécificité de l'espèce:

Humain

Contrôles positifs:

WB : cellules MCF7, cellules HeLa, cellules HeLa apoptosées, cellules K-562

IF : cellules HepG2,

Informations générales

Interleukin-20 receptor subunit beta (IL20RB) is a single-pass type I membrane protein of the type II cytokine receptor family. The interleukin-20-receptor I complex (IL-20-RI) is composed of two chains, IL20RA and IL20RB. IL-20-RI is a receptor for IL-19, IL-20 and IL-24. IL20RB can also form a heterodimer with IL22RA1. The IL22RA1/IL20RB dimer is a receptor for IL20 and IL24.

Stockage

Stockage:

Stocker à -20°C. Stable pendant un an après l'expédition.

Tampon de stockage:

PBS avec azoture de sodium à 0,02 % et glycérol à 50 % pH 7,3

L'aliquotage n'est pas nécessaire pour le stockage à -20C

*** Les 20ul contiennent 0,1% de BSA.

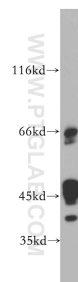
For technical support and original validation data for this product please contact:

T: 1 (888) 4PTGLAB (1-888-478-4522) (toll free in USA), or 1(312) 455-8498 (outside USA)

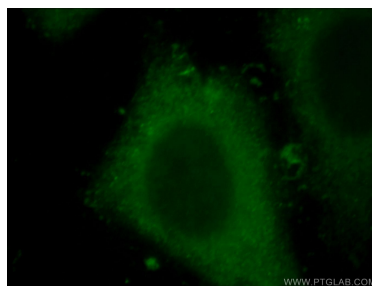
E: proteintech@ptglab.com
W: ptglab.com

This product is exclusively available under Proteintech Group brand and is not available to purchase from any other manufacturer.

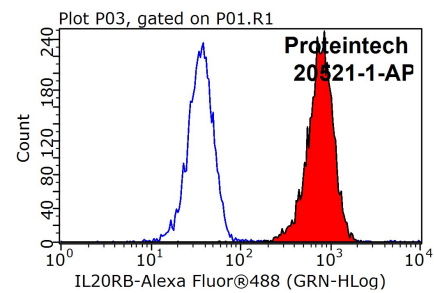
Données de validation sélectionnées



MCF7 cells were subjected to SDS PAGE followed by western blot with 20521-1-AP (IL20RB antibody) at dilution of 1:500 incubated at room temperature for 1.5 hours.



Immunofluorescent analysis of HepG2 cells, using IL20RB antibody 20521-1-AP at 1:25 dilution and FITC- labeled goat anti-Rabbit IgG (green).



1X10⁶ K-562 cells were stained with 0.2ug IL20RB antibody (20521-1-AP, red) and control antibody (blue). Fixed with 90% MeOH blocked with 3% BSA (30 min). Alexa Fluor 488-conjugated AffiniPure Goat Anti-Rabbit IgG(H+L) with dilution 1:1000.