

À des fins de recherche uniquement

# Anticorps Polyclonal de lapin anti-Beta Actin



Numéro de catalogue: 20536-1-AP

Phare

2831 Publications

## Informations de base

Numéro de catalogue:

20536-1-AP

Taille:

150ul, Concentration: 600 µg/ml by Nanodrop;

Hôte:

Lapin

Isotype:

IgG

Immunogen Catalog Number:

AG14521

Numéro d'acquisition GenBank:

BC002409

Identification du gène (NCBI):

60

Nom complet:

actin, beta

MW calculé

375 aa, 42 kDa

MW observés:

42 kDa

Méthode de purification:

Purification par affinité contre l'antigène

Dilutions recommandées:

WB 1:1000-1:5000

IHC 1:50-1:500

IF 1:200-1:800

## Applications

Applications testées:

FC, IF, IHC, WB, ELISA

Demandes citées:

Cell treatment, CoIP, IF, IHC, IP, WB

Spécificité de l'espèce:

canin, Humain, rat, singe, souris

Espèces citées:

Chèvre, Humain, levure, poulet, rat, souris

**Remarque-IHC: il est suggéré de démasquer l'antigène avec un tampon de TE buffer pH 9,0; (\*) À défaut, 'le démasquage de l'antigène peut être effectué avec un tampon citrate pH 6,0.**

Contrôles positifs:

WB : cellules HEK-293, cellules A549, cellules C6, cellules Caco-2, cellules HeLa, cellules HepG2, cellules Jurkat, cellules NIH/3T3, cellules RAW 264.7, cellules SMMC-7721, tissu cérébral de rat, tissu cérébral de souris, tissu de côlon de souris, tissu hépatique de rat, tissu hépatique de souris, tissu rénal de rat, tissu splénique de rat

IHC : tissu de côlon humain, tissu rénal humain

IF : cellules MDCK,

## Informations générales

Beta Actin, also named as ACTB and F-Actin, belongs to the actin family. Actins are highly conserved globular proteins that are involved in various types of cell motility and are ubiquitously expressed in all eukaryotic cells. At least six isoforms of actins are known in mammals and other vertebrates: alpha (ACTC1, cardiac muscle 1), alpha 1 (ACTA1, skeletal muscle) and 2 (ACTA2, aortic smooth muscle), beta (ACTB), gamma 1 (ACTG1) and 2 (ACTG2, enteric smooth muscle). Beta and gamma 1 are two non-muscle actin proteins. Most actins consist of 376aa, while ACTG2 (rich in muscles) has 375aa and ACTG1(found in non-muscle cells) has only 374aa. Beta actin has been widely used as the internal control in RT-PCR and Western Blotting as a 42-kDa protein. However, the 37-40, 31, 15 kDa cleaved fragment of beta actin can be generated during apoptosis process. This antibody was generated against N-terminal region of human beta actin protein and can cross-react with other actins. (9173887, 11217076, 10229193 )

## Publications notables

Autrice	Pubmed ID	Journal	Application
Yu Xu	36247302	Am J Transl Res	WB
Xiao-Feng Zhu	36180975	Phytother Res	WB
Ling Guo	34867437	Front Physiol	WB

## Stockage

Stockage:

Stocker à -20°C. Stable pendant un an après l'expédition.

Tampon de stockage:

PBS avec azoture de sodium à 0,02 % et glycérol à 50 % pH 7,3

L'aliquotage n'est pas nécessaire pour le stockage à -20C

\*\*\* Les 20ul contiennent 0,1% de BSA.

For technical support and original validation data for this product please contact:

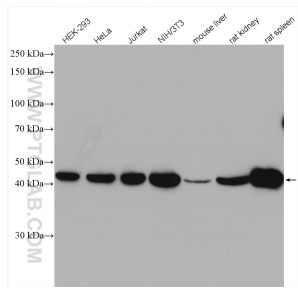
T: 1 (888) 4PTGLAB (1-888-478-4522) (toll free in USA), or 1(312) 455-8498 (outside USA)

E: proteintech@ptglab.com

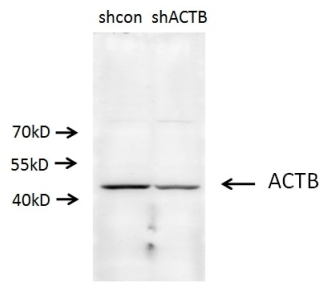
W: ptglab.com

This product is exclusively available under Proteintech Group brand and is not available to purchase from any other manufacturer.

## Données de validation sélectionnées



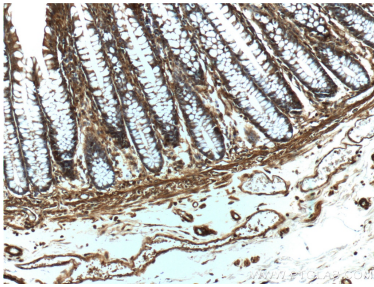
Various lysates were subjected to SDS PAGE followed by western blot with 20536-1-AP (beta Actin antibody) at dilution of 1:5000 incubated at room temperature for 1.5 hours.



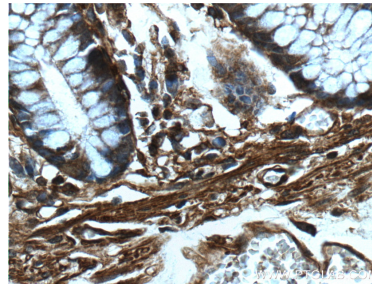
A549 cells (shcontrol and shRNA of Beta actin) were subjected to SDS PAGE followed by western blot with 20536-1-AP (ACTB antibody) at dilution of 1:500.



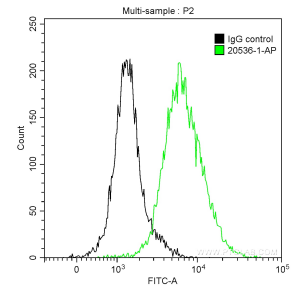
Immunofluorescent analysis of (-20°C Methanol) fixed MDCK cells using Beta Actin antibody (20536-1-AP) at dilution of 1:400 and CoraLite®488-Conjugated AffiniPure Goat Anti-Rabbit IgG(H+L).



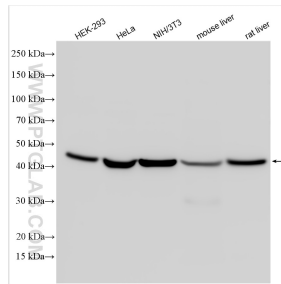
Immunohistochemical analysis of paraffin-embedded human colon tissue slide using 20536-1-AP (beta actin Antibody) at dilution of 1:200 (under 10x lens).



Immunohistochemical analysis of paraffin-embedded human colon tissue slide using 20536-1-AP (beta actin Antibody) at dilution of 1:200 (under 40x lens).



1X10<sup>6</sup> HepG2 cells were intracellularly stained with 0.2 ug Anti-Human Beta Actin (20536-1-AP) and CoraLite®488-Conjugated AffiniPure Goat Anti-Rabbit IgG(H+L) at dilution 1:1000 (green), and 0.2 ug Control Antibody. Cells were fixed with 90% MeOH.



Various lysates were subjected to SDS PAGE followed by western blot with 20536-1-AP (Beta Actin antibody) at dilution of 1:10000 incubated at room temperature for 1.5 hours.