

À des fins de recherche uniquement

# Anticorps Polyclonal de lapin anti- ERCC6/CSB



Numéro de catalogue: 20548-1-AP

## Informations de base

<b>Numéro de catalogue:</b> 20548-1-AP	<b>Numéro d'acquisition GenBank:</b> NM_000124	<b>Méthode de purification:</b> Purification par affinité contre l'antigène
<b>Taille:</b> 150ul , Concentration: 433 µg/ml by Nanodrop and 433 µg/ml by Bradford method using BSA as the standard;	<b>Identification du gène (NCBI):</b> 2074	<b>Dilutions recommandées:</b> WB 1:200-1:1000
<b>Hôte:</b> Lapin	<b>Nom complet:</b> excision repair cross-complementing rodent repair deficiency, complementation group 6	
<b>Isotype:</b> IgG	<b>MW calculé</b> 168 kDa	
	<b>MW observés:</b> 150 kDa	

## Applications

<b>Applications testées:</b> WB, ELISA	<b>Contrôles positifs:</b> WB : tissu cérébral de souris,
<b>Spécificité de l'espèce:</b> Humain, rat, souris	

## Informations générales

ERCC6, also named as CSB, belongs to the SNF2/RAD54 helicase family. It is involved in the preferential repair of active genes. It is presumed DNA or RNA unwinding function. ERCC6 corrects the UV survival and RNA synthesis after UV exposure of Cockayne syndrome complementation group B. Defects in ERCC6 are the cause of Cockayne syndrome type B (CSB), cerebro-oculo-facio-skeletal syndrome type 1 (COFS1), De Sanctis-Cacchione syndrome (DSC), and UV-sensitive syndrome (UVS). Genetic variation in ERCC6 is associated with susceptibility to age-related macular degeneration type 5 (ARMD5). The antibody is specific to ERCC6.

## Stockage

**Stockage:**  
Stocker à -20°C. Stable pendant un an après l'expédition.  
**Tampon de stockage:**  
PBS avec azoture de sodium à 0,02 % et glycérol à 50 % pH 7,3  
L'aliquotage n'est pas nécessaire pour le stockage à -20C

\*\*\* Les 20ul contiennent 0,1% de BSA.

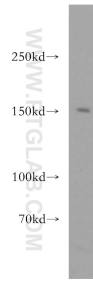
For technical support and original validation data for this product please contact:

T: 1 (888) 4PTGLAB (1-888-478-4522) (toll free  
in USA), or 1(312) 455-8498 (outside USA)

E: [proteintech@ptglab.com](mailto:proteintech@ptglab.com)  
W: [ptglab.com](http://ptglab.com)

This product is exclusively available under Proteintech Group brand and is not available to purchase from any other manufacturer.

## Données de validation sélectionnées



mouse brain tissue were subjected to SDS PAGE followed by western blot with 20548-1-AP (ERCC6/CSB antibody) at dilution of 1:500 incubated at room temperature for 1.5 hours.