

À des fins de recherche uniquement

Anticorps Polyclonal de lapin anti-DICER1



Numéro de catalogue: 20567-1-AP

Phare

23 Publications

Informations de base

Numéro de catalogue:

20567-1-AP

Taille:

150ul, Concentration: 550 µg/ml by Nanodrop;

Hôte:

Lapin

Isotype:

IgG

Numéro d'acquisition GenBank:

NM_030621

Identification du gène (NCBI):

23405

Nom complet:

dicer 1, ribonuclease type III

MW calculé

219 kDa

MW observés:

220-250 kDa, 90 kDa

Méthode de purification:

Purification par affinité contre l'antigène

Dilutions recommandées:

WB 1:200-1:1000

IP 0.5-4.0 µg for IP and 1:200-1:1000 for WB

IHC 1:50-1:500

IF 1:10-1:100

Applications

Applications testées:

FC, IF, IHC, IP, WB, ELISA

Demandes citées:

IF, IHC, IP, WB

Spécificité de l'espèce:

Humain

Espèces citées:

Humain

Contrôles positifs:

WB : cellules HeLa, cellules HepG2, cellules K-562

IP : cellules Jurkat,

IHC : tissu testiculaire humain, tissu de cancer du poumon humain, tissu testiculaire de souris

IF : cellules HepG2, tissu de tumeur ovarienne humain

Remarque-IHC: il est suggéré de démasquer l'antigène avec un tampon de TE buffer pH 9,0; (*) À défaut, le démasquage de l'antigène peut être effectué avec un tampon citrate pH 6,0.

Informations générales

DICER1, also named as DICER, HERNA and KIAA0928, belongs to the helicase family and Dicer subfamily. It is required for formation of the RNA induced silencing complex (RISC). DICER1 is a component of the RISC loading complex (RLC), also known as the micro-RNA (miRNA) loading complex (miRLC), which is composed of DICER1, EIF2C2/AGO2 and TARBP2. Within the RLC/miRLC, DICER1 and TARBP2 are required to process precursor miRNAs (pre-miRNAs) to mature miRNAs and then load them onto EIF2C2/AGO2. EIF2C2/AGO2 bound to the mature miRNA constitutes the minimal RISC and may subsequently dissociate from DICER1 and TARBP2. DICER1 cleaves double-stranded RNA to produce short interfering RNAs (siRNAs) which target the selective destruction of complementary RNAs. The antibody is specific to DICER1. The calculated molecular weight of DICER1 is 219 kDa, but modified DICER1 is about 220-250 kDa. DICER1 exists some isoforms with molecular weight 219 kDa and 93 kDa.

Publications notables

Autrice	Pubmed ID	Journal	Application
An Yan	36273819	Nucleic Acids Res	IF
Yan Wang	34695450	Neurochem Int	WB
Tao Zuo	29049992	Cell Physiol Biochem	WB

Stockage

Stockage:

Stocker à -20°C. Stable pendant un an après l'expédition.

Tampon de stockage:

PBS avec azoture de sodium à 0,02 % et glycérol à 50 % pH 7,3

L'aliquotage n'est pas nécessaire pour le stockage à -20C

*** Les 20ul contiennent 0,1% de BSA.

For technical support and original validation data for this product please contact:

T: 1 (888) 4PTGLAB (1-888-478-4522) (toll free in USA), or 1(312) 455-8498 (outside USA)

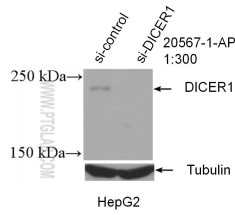
E: proteintech@ptglab.com
W: ptglab.com

This product is exclusively available under Proteintech Group brand and is not available to purchase from any other manufacturer.

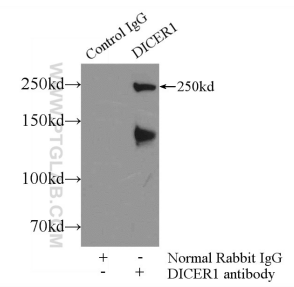
Données de validation sélectionnées



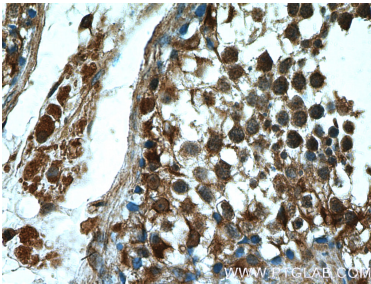
HeLa cells were subjected to SDS PAGE followed by western blot with 20567-1-AP (DICER1 antibody) at dilution of 1:300 incubated at room temperature for 1.5 hours.



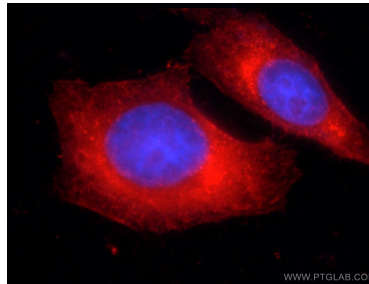
WB result of DICER1 antibody (20567-1-AP; 1:300; incubated at room temperature for 1.5 hours) with sh-Control and sh-DICER1 transfected HepG2 cells.



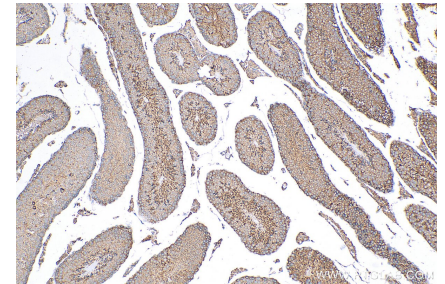
IP Result of anti-DICER1 (IP:20567-1-AP, 5ug; Detection:20567-1-AP 1:300) with Jurkat cells lysate 2000ug.



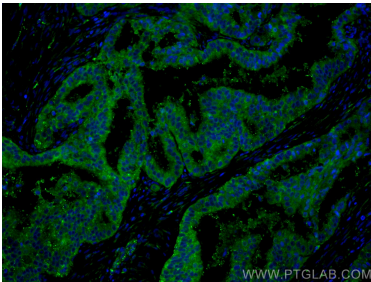
Immunohistochemical analysis of paraffin-embedded human testis tissue slide using 20567-1-AP (DICER1 Antibody) at dilution of 1:200 (under 40x lens).



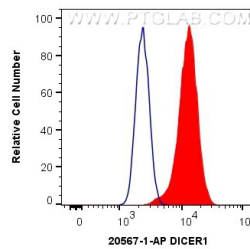
Immunofluorescent analysis of HepG2 cells using 20567-1-AP (DICER1 antibody) at dilution of 1:25 and Rhodamine-Goat anti-Rabbit IgG.



Immunohistochemical analysis of paraffin-embedded mouse testis tissue slide using 20567-1-AP (DICER1 antibody) at dilution of 1:400 (under 10x lens). Heat mediated antigen retrieval with Tris-EDTA buffer (pH 9.0).



Immunofluorescent analysis of (4% PFA) fixed human ovary tumor tissue using DICER1 antibody (20567-1-AP) at dilution of 1:200 and CoraLite®488-Conjugated AffiniPure Goat Anti-Rabbit IgG(H+L).



1×10^6 HepG2 cells were intracellularly stained with 0.4 ug Anti-Human DICER1 (20567-1-AP) and CoraLite®488-Conjugated AffiniPure Goat Anti-Rabbit IgG(H+L) at dilution 1:1000 (red), or 0.4 ug Isotype Control. Cells were fixed with 4% PFA and permeabilized with Flow Cytometry Perm Buffer (PF00011-C).