

À des fins de recherche uniquement

Anticorps Polyclonal de lapin anti-PRDX1



Numéro de catalogue: 20568-1-AP

Phare

1 Publications

Informations de base

Numéro de catalogue:

20568-1-AP

Taille:

150ul, Concentration: 800 µg/ml by Nanodrop and 480 µg/ml by Bradford method using BSA as the standard;

Hôte:

Lapin

Isotype:

IgG

Numéro d'acquisition GenBank:

NM_002574

Identification du gène (NCBI):

5052

Nom complet:

peroxiredoxin 1

MW calculé

22 kDa

MW observés:

23 kDa

Méthode de purification:

Purification par affinité contre l'antigène

Dilutions recommandées:

WB 1:1000-1:8000

IF 1:10-1:100

Applications

Applications testées:

IF, WB, ELISA

Spécificité de l'espèce:

Humain, rat, souris

Contrôles positifs:

WB : cellules HEK-293, cellules HeLa, cellules Jurkat, cellules MCF-7

IF : cellules HepG2, cellules HeLa

Informations générales

PRDX1(Peroxiredoxin-1), also named as PAGA, PAGB, TDPX2, PAG or NKEF-A, belongs to the ahpC/TSA family. PRDX1 is a thiol reductase that plays critical roles in oxidative and thermal stress defense mechanisms through its abilities to metabolize H₂O₂ and act as a molecular chaperone, respectively. PRDX1 might participate in the signaling cascades of growth factors and tumor necrosis factor-alpha by regulating the intracellular concentrations of H₂O₂ (PMID: 9497357). It reduces an intramolecular disulfide bond in GDPD5 that gates the ability to GDPD5 to drive postmitotic motor neuron differentiation. PRDX1 can form a dimer, and also can be phosphorylated on Thr-90 during the M-phase, which leads to a more than 80% decrease in enzymatic activity (PMID: 22583657, 11986303). The antibody is specific to PRDX1.

Publications notables

Autrice	Pubmed ID	Journal	Application
Huifang Zhu	31130519	Cell Chem Biol	

Stockage

Stockage:

Stocker à -20°C. Stable pendant un an après l'expédition.

Tampon de stockage:

PBS avec azoture de sodium à 0,02 % et glycérol à 50 % pH 7,3

L'aliquotage n'est pas nécessaire pour le stockage à -20C

*** Les 20ul contiennent 0,1% de BSA.

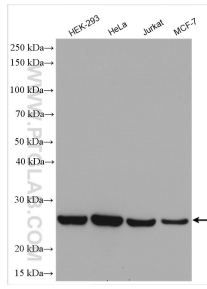
For technical support and original validation data for this product please contact:

T: 1 (888) 4PTGLAB (1-888-478-4522) (toll free in USA), or 1(312) 455-8498 (outside USA)

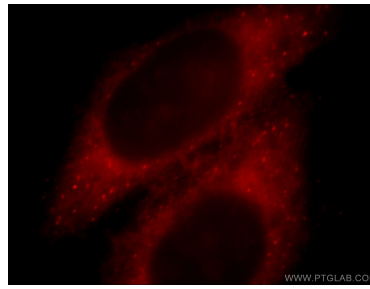
E: proteintech@ptglab.com
W: ptglab.com

This product is exclusively available under Proteintech Group brand and is not available to purchase from any other manufacturer.

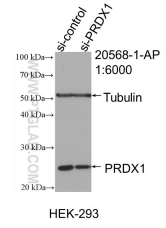
Données de validation sélectionnées



Various lysates were subjected to SDS PAGE followed by western blot with 20568-1-AP (PRDX1 antibody) at dilution of 1:4000 incubated at room temperature for 1.5 hours.



Immunofluorescent analysis of HepG2 cells, using PRDX1 antibody 20568-1-AP at 1:25 dilution and Rhodamine-labeled goat anti-rabbit IgG (red).



WB result of PRDX1 antibody (20568-1-AP; 1:6000; incubated at room temperature for 1.5 hours) with sh-Control and sh-PRDX1 transfected HEK-293 cells.