

À des fins de recherche uniquement

Anticorps Polyclonal de lapin anti-PI3 Kinase p110 Beta



Numéro de catalogue: 20584-1-AP

Phare

313 Publications

Informations de base

Numéro de catalogue:

20584-1-AP

Taille:

150ul, Concentration: 1000 µg/ml by Nanodrop;

Hôte:

Lapin

Isotype:

IgG

Numéro d'acquisition GenBank:

NM_006219

Identification du gène (NCBI):

5291

Nom complet:

phosphoinositide-3-kinase, catalytic, beta polypeptide

MW calculé

123 kDa

MW observés:

110-130 kDa

Méthode de purification:

Purification par affinité contre l'antigène

Dilutions recommandées:

WB 1:200-1:1000

IP 0.5-4.0 ug for IP and 1:200-1:1000 for WB

IHC 1:50-1:500

Applications

Applications testées:

FC, IHC, IP, WB, ELISA

Demandes citées:

CoIP, IF, IHC

Spécificité de l'espèce:

Humain, rat

Espèces citées:

canin, Humain, poisson-zèbre, porc, poulet, rat, souris, Megalobrama Amblycephala, fish

Remarque-IHC: il est suggéré de démasquer l'antigène avec un tampon de TE buffer pH 9,0; (*) A défaut, 'le démasquage de l'antigène peut être 'effectué avec un tampon citrate pH 6,0.

Contrôles positifs:

WB : tissu hépatique de rat,

IP : cellules HepG2,

IHC : tissu de cancer du poumon humain,

Informations générales

PIK3CB(phosphatidylinositol 4,5-bisphosphate 3-kinase catalytic subunit beta isoform) is also named as PIK3C1, PI3K-beta, p110beta. The gene encodes a 1070 amino acid protein which belongs to the PI3/PI4-kinase family. Phosphoinositide 3-kinases (PI3Ks) have been implicated as participants in signaling pathways regulating cell growth by virtue of their activation in response to various mitogenic stimuli. The class I PI3 kinases are heterodimers composed of 110 kDa catalytic subunits that associate with regulatory adaptor proteins. Four class I catalytic subunits have been identified, PIK3CA (p110 α), PIK3CB (p110 β), PIK3CD (p110 δ) and PIK3CG (p110 γ) (PMID:19177002). This antibody is specific to PIK3CB.

Publications notables

Autrice	Pubmed ID	Journal	Application
Yangmeng Zhao	36178125	Redox Rep	WB
Tong Li	33152931	Biomed Pharmacother	WB
Samana Batool	30274346	Int J Mol Sci	WB

Stockage

Stockage:

Stocker à -20°C. Stable pendant un an après l'expédition.

Tampon de stockage:

PBS avec azoture de sodium à 0,02 % et glycérol à 50 % pH 7,3

L'aliquoteage n'est pas nécessaire pour le stockage à -20C

*** Les 20ul contiennent 0,1% de BSA.

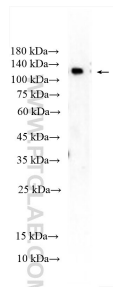
For technical support and original validation data for this product please contact:

T: 1 (888) 4PTGLAB (1-888-478-4522) (toll free in USA), or 1(312) 455-8498 (outside USA)

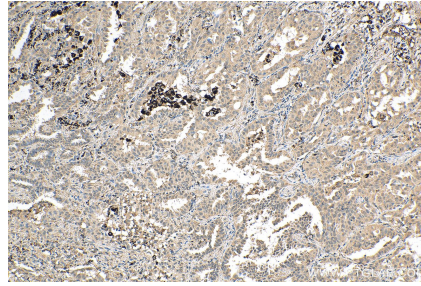
E: proteintech@ptglab.com
W: ptglab.com

This product is exclusively available under Proteintech Group brand and is not available to purchase from any other manufacturer.

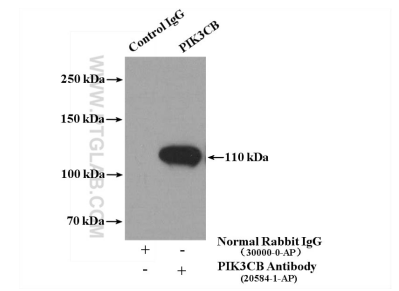
Données de validation sélectionnées



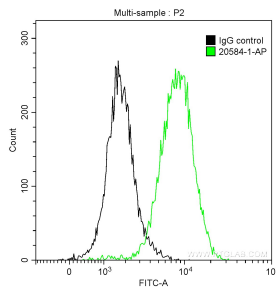
rat liver tissue were subjected to SDS PAGE followed by western blot with 20584-1-AP (PI3 Kinase p110 Beta antibody) at dilution of 1:300 incubated at room temperature for 1.5 hours.



Immunohistochemical analysis of paraffin-embedded human lung cancer tissue slide using 20584-1-AP (PI3 Kinase p110 Beta antibody) at dilution of 1:200 (under 10x lens). Heat mediated antigen retrieval with Tris-EDTA buffer (pH 9.0).



IP Result of anti-PI3K p110(beta) (IP:20584-1-AP, 4ug; Detection:20584-1-AP 1:300) with HepG2 cells lysate 2700ug.



1X10⁶ HeLa cells were intracellularly stained with 0.2 ug Anti-Human PI3 Kinase p110 Beta (20584-1-AP) and CoraLite®488-Conjugated AffiniPure Goat Anti-Rabbit IgG(H+L) at dilution 1:1000 (green), and 0.2 ug Control Antibody. Cells were fixed with 90% MeOH.