

À des fins de recherche uniquement

Anticorps Polyclonal de lapin anti-POLR1A



Numéro de catalogue: 20595-1-AP

2 Publications

Informations de base

Numéro de catalogue:

20595-1-AP

Taille:

150ul, Concentration: 500 µg/ml by Nanodrop and 307 µg/ml by Bradford method using BSA as the standard;

Hôte:

Lapin

Isotype:

IgG

Immunogen Catalog Number:

AG14543

Numéro d'acquisition GenBank:

BC017115

Identification du gène (NCBI):

25885

Nom complet:

polymerase (RNA) I polypeptide A, 194kDa

MW calculé

1720 aa, 195 kDa

MW observés:

190-195 kDa

Méthode de purification:

Purification par affinité contre l'antigène

Dilutions recommandées:

WB 1:500-1:2000

IP 0.5-4.0 ug for IP and 1:200-1:1000 for WB

Applications

Applications testées:

IP, WB, ELISA

Demandes citées:

IP

Spécificité de l'espèce:

Humain

Espèces citées:

Humain

Contrôles positifs:

WB : cellules HeLa, cellules HEK-293, cellules HepG2

IP : cellules HeLa,

Informations générales

POLR1A, DNA-directed RNA polymerase I subunit RPA1, is a DNA-dependent RNA polymerase catalyzes the transcription of DNA into RNA. RNA polymerase I (Pol I) located in the nucleolus and transcribes class I genes, which code for large ribosomal RNA. Different subunits of the Pol I transcription are targets of various physiological stimuli, which suggests that multiple signaling pathways are involved in carrying out Pol I transcription. Together with the second largest subunit, it is the catalytic core component of RNA polymerase I that synthesizes ribosomal RNA precursors.

Publications notables

Autrice	Pubmed ID	Journal	Application
Sijie Liu	33626331	Cell	
Chaoshen Wu	34904330	Cancer Sci	IP

Stockage

Stockage:

Stocker à -20°C. Stable pendant un an après l'expédition.

Tampon de stockage:

PBS avec azoture de sodium à 0,02 % et glycérol à 50 % pH 7,3

L'aliquotage n'est pas nécessaire pour le stockage à -20C

*** Les 20ul contiennent 0,1% de BSA.

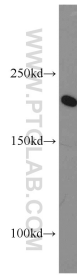
For technical support and original validation data for this product please contact:

T: 1 (888) 4PTGLAB (1-888-478-4522) (toll free in USA), or 1(312) 455-8498 (outside USA)

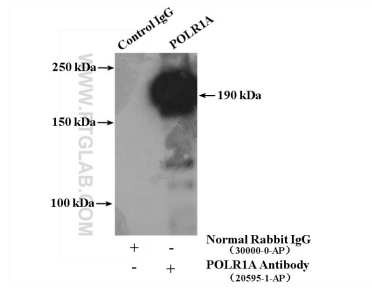
E: proteintech@ptglab.com
W: ptglab.com

This product is exclusively available under Proteintech Group brand and is not available to purchase from any other manufacturer.

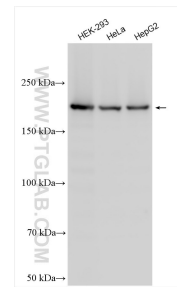
Données de validation sélectionnées



HeLa cells were subjected to SDS PAGE followed by western blot with 20595-1-AP (POLR1A antibody) at dilution of 1:1000 incubated at room temperature for 1.5 hours.



IP Result of anti-POLR1A (IP:20595-1-AP, 4ug; Detection:20595-1-AP 1:300) with HeLa cells lysate 2400ug.



Various lysates were subjected to SDS PAGE followed by western blot with 20595-1-AP (POLR1A antibody) at dilution of 1:3000 incubated at room temperature for 1.5 hours.