

À des fins de recherche uniquement

Anticorps Polyclonal de lapin anti-CXCR2



Numéro de catalogue: 20634-1-AP

20 Publications

Informations de base

Numéro de catalogue:

20634-1-AP

Taille:

150ul, Concentration: 500 µg/ml by Nanodrop;

Hôte:

Lapin

Isotype:

IgG

Immunogen Catalog Number:

AG14670

Numéro d'acquisition GenBank:

BC037961

Identification du gène (NCBI):

3579

Nom complet:

interleukin 8 receptor, beta

MW calculé

360 aa, 41 kDa

MW observés:

45-50 kDa

Méthode de purification:

Purification par affinité contre l'antigène

Dilutions recommandées:

WB 1:1000-1:4000

IP 0.5-4.0 µg for IP and 1:500-1:2000 for WB

IHC 1:50-1:500

IF 1:10-1:100

Applications

Applications testées:

IF, IHC, IP, WB, ELISA

Demandes citées:

CoIP, IF, IHC, WB

Spécificité de l'espèce:

Humain

Espèces citées:

Humain, souris

Contrôles positifs:

WB : cellules L02, cellules COLO 320

IP : cellules HepG2,

IHC : tissu d'amygdalite humain,

IF : cellules HepG2,

Remarque-IHC: il est suggéré de démasquer l'antigène avec un tampon de TE buffer pH 9,0; (*) À défaut, 'le démasquage de l'antigène peut être 'effectué avec un tampon citrate pH 6,0.

Informations générales

IL8RB, also named as CXCR2, GRO/MGSA receptor, IL-8 receptor type 2, CDw128b and CD182, belongs to the G-protein coupled receptor 1 family. It is a receptor for interleukin-8 which is a powerful neutrophil chemotactic factor. Binding of IL-8 to the receptor causes activation of neutrophils. This response is mediated via a G-protein that activates a phosphatidylinositol-calcium second messenger system. It binds to IL-8 with high affinity. IL8RB also binds with high affinity to CXCL3, GRO/MGSA and NAP-2. This antibody is specific to human IL8RB.

Publications notables

Autrice	Pubmed ID	Journal	Application
Ling Tang	36175598	Med Oncol	WB
Sainan Zhang	34603292	Front Immunol	IF
Yuchen Ma	36327908	Mol Immunol	WB

Stockage

Stockage:

Stocker à -20°C. Stable pendant un an après l'expédition.

Tampon de stockage:

PBS avec azoture de sodium à 0,02 % et glycérol à 50 % pH 7,3

L'aliquotage n'est pas nécessaire pour le stockage à -20C

***** Les 20ul contiennent 0,1% de BSA.**

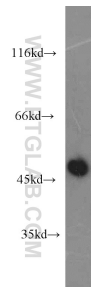
For technical support and original validation data for this product please contact:

T: 1 (888) 4PTGLAB (1-888-478-4522) (toll free in USA), or 1(312) 455-8498 (outside USA)

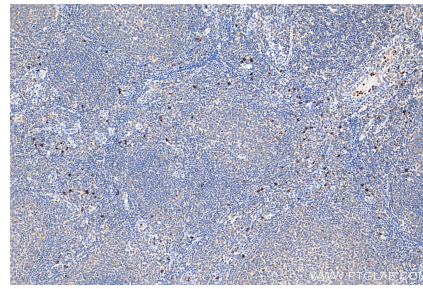
E: proteintech@ptglab.com
W: ptglab.com

This product is exclusively available under Proteintech Group brand and is not available to purchase from any other manufacturer.

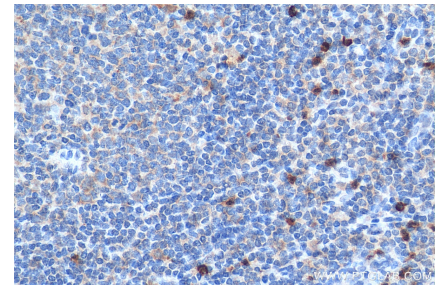
Données de validation sélectionnées



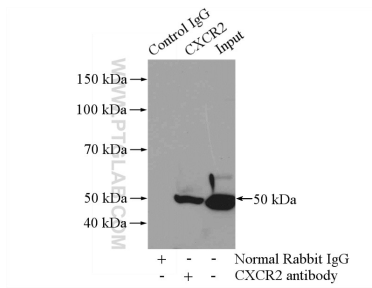
L02 cells were subjected to SDS PAGE followed by western blot with 20634-1-AP (CXCR2 antibody) at dilution of 1:2000 incubated at room temperature for 1.5 hours.



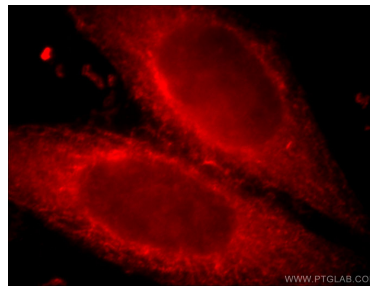
Immunohistochemical analysis of paraffin-embedded human tonsillitis tissue slide using 20634-1-AP (CXCR2 antibody) at dilution of 1:200 (under 10x lens). Heat mediated antigen retrieval with Tris-EDTA buffer (pH 9.0).



Immunohistochemical analysis of paraffin-embedded human tonsillitis tissue slide using 20634-1-AP (CXCR2 antibody) at dilution of 1:200 (under 40x lens). Heat mediated antigen retrieval with Tris-EDTA buffer (pH 9.0).



IP Result of anti-CXCR2 (IP:20634-1-AP, 4ug; Detection:20634-1-AP 1:1000) with HepG2 cells lysate 3200ug.



Immunofluorescent analysis of HepG2 cells, using IL8RB antibody 20634-1-AP at 1:25 dilution and Rhodamine-labeled goat anti-rabbit IgG (red).